

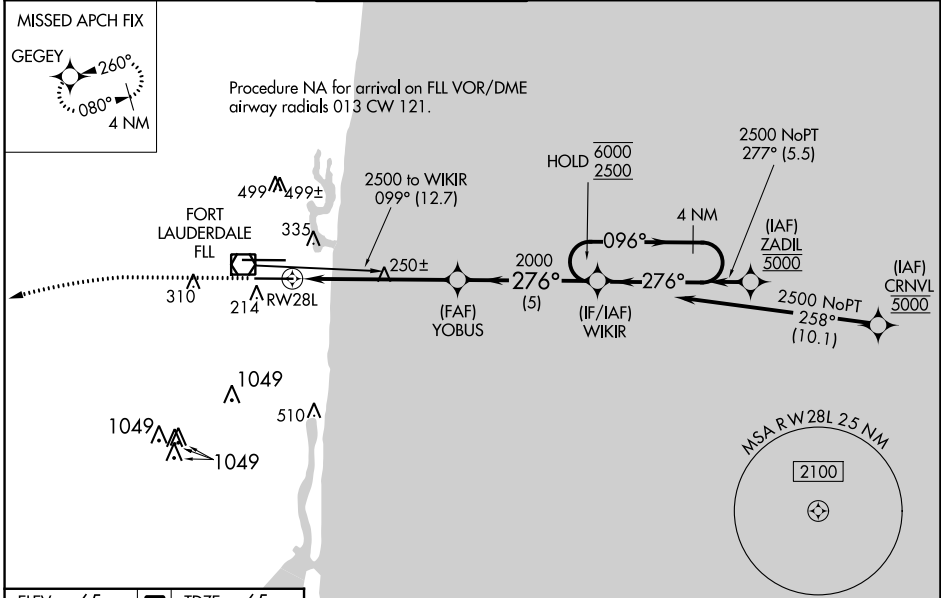
WAAS CH <b>58336</b> <b>W28B</b>	APP CRS <b>276°</b>	Rwy Idg TDZE Apt Elev	<b>8000</b> <b>65</b> <b>65</b>
--	------------------------	-----------------------------	---------------------------------------

# RNAV (GPS) RWY 28L

FORT LAUDERDALE/HOLLYWOOD INTL (FLL)

RNP APCH-GPS.	<p><b>MALSF</b></p> <p>MISSED APPROACH: Climb to 1000 then climbing left turn to 3000 direct GEGEY and hold.</p>
<p><b>⚠</b> Inop table does not apply to LPV. For uncompensated Baro-VNAV systems, LNAV/VNAV NA below 7°C or above 54°C. Simultaneous approach authorized. LNAV procedure NA during simultaneous operations. Use of FD or AP required during simultaneous operations.</p>	

D-ATIS <b>135.0</b>	MIAMI APP CON <b>133.775 285.6</b>	FORT LAUDERDALE TOWER <b>119.3 257.8</b>	GND CON <b>121.4</b>	CLNC DEL <b>128.4</b>	CPDLC
------------------------	---------------------------------------	---	-------------------------	--------------------------	-------

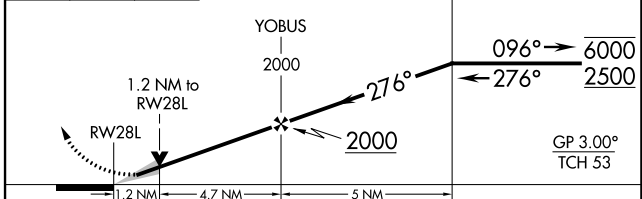
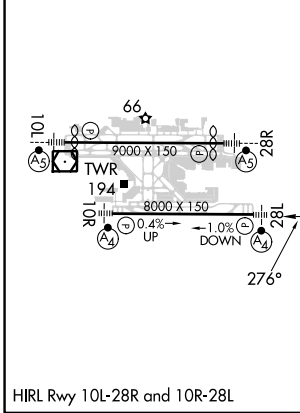


SE-3, 03 OCT 2024 to 31 OCT 2024

SE-3, 03 OCT 2024 to 31 OCT 2024

ELEV 65	<b>D</b>	TDZE 65
---------	----------	---------

1000	3000	GEGEY	VGSi and RNAV glidepath not coincident (VGSi Angle 3.00/TCH 69).



CATEGORY	A	B	C	D
LPV DA		265/40	200 (200-¾)	
LNAV/VNAV DA		459/45	394 (400-7/8)	
LNAV MDA	500/40	435 (500-¾)	500/50	435 (500-1)
<b>C</b> CIRCLING	680-1	615 (700-1)	800-2 735 (800-2)	800-2¼ 735 (800-2¼)