

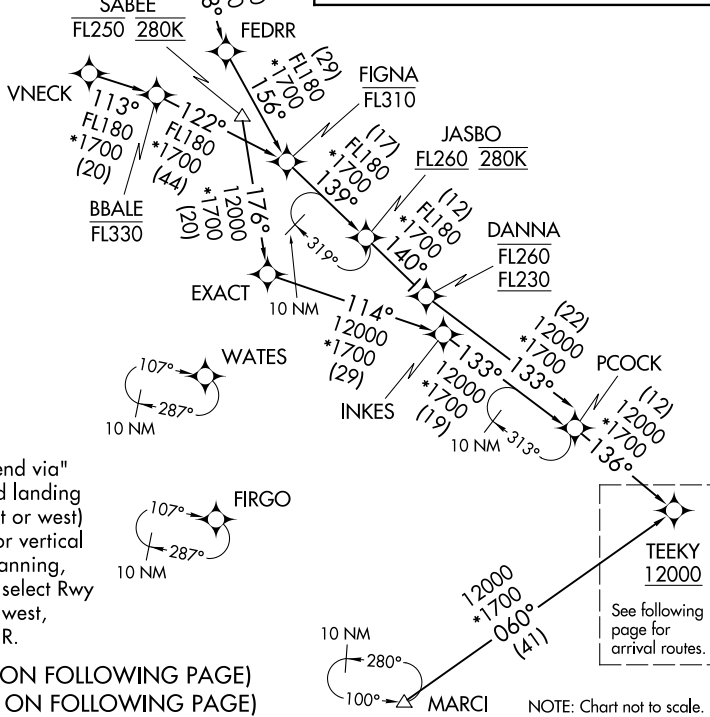
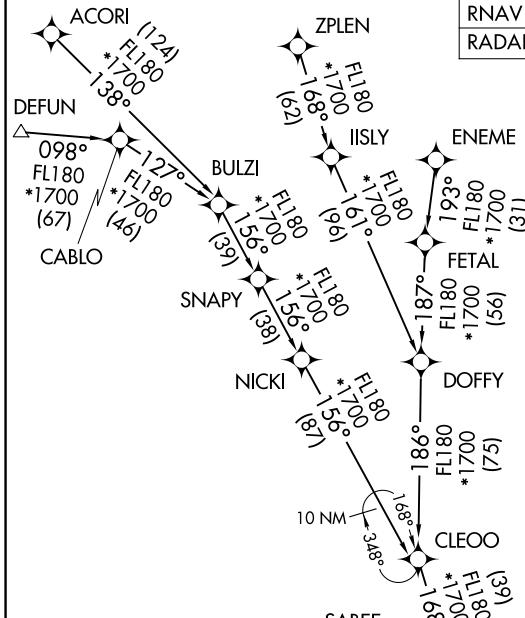
TEEKY THREE ARRIVAL (RNAV) Transition Routes FORT LAUDERDALE, FLORIDA

RNAV 1-DME/DME/IRU or GPS.
RADAR required.

MIAMI APP CON
133.775 371.9
FL D-ATIS
135.0
FXE ATIS
119.85
PMP ATIS
120.55

- NOTE: Jet aircraft only.
NOTE: Do not file PCOCK, FEDRR, or CLEOO Transitions - to be assigned by ATC.
NOTE: SABEE Transition for TPA area airports only.

- ACORI TRANSITION (ACORI.TEEKY3)
- CLEOO TRANSITION (CLEOO.TEEKY3)
- DEFUN TRANSITION (DEFUN.TEEKY3)
- ENEME TRANSITION (ENEME.TEEKY3)
- FEDRR TRANSITION (FEDRR.TEEKY3)
- MARCI TRANSITION (MARCI.TEEKY3)
- PCOCK TRANSITION (PCOCK.TEEKY3)
- SABEE TRANSITION (SABEE.TEEKY3)
- VNECK TRANSITION (VNECK.TEEKY3)
- ZPLEN TRANSITION (ZPLEN.TEEKY3)



NOTE: Expect "descend via" clearance and landing direction (east or west) by ARTCC. For vertical navigation planning, landing east, select Rwy 10R, landing west, select Rwy 28R.

(NARRATIVE ON FOLLOWING PAGE)
(CONTINUED ON FOLLOWING PAGE)

TEEKY
12000
See following page for arrival routes.

NOTE: Chart not to scale.

SE-3, 03 OCT 2024 to 31 OCT 2024

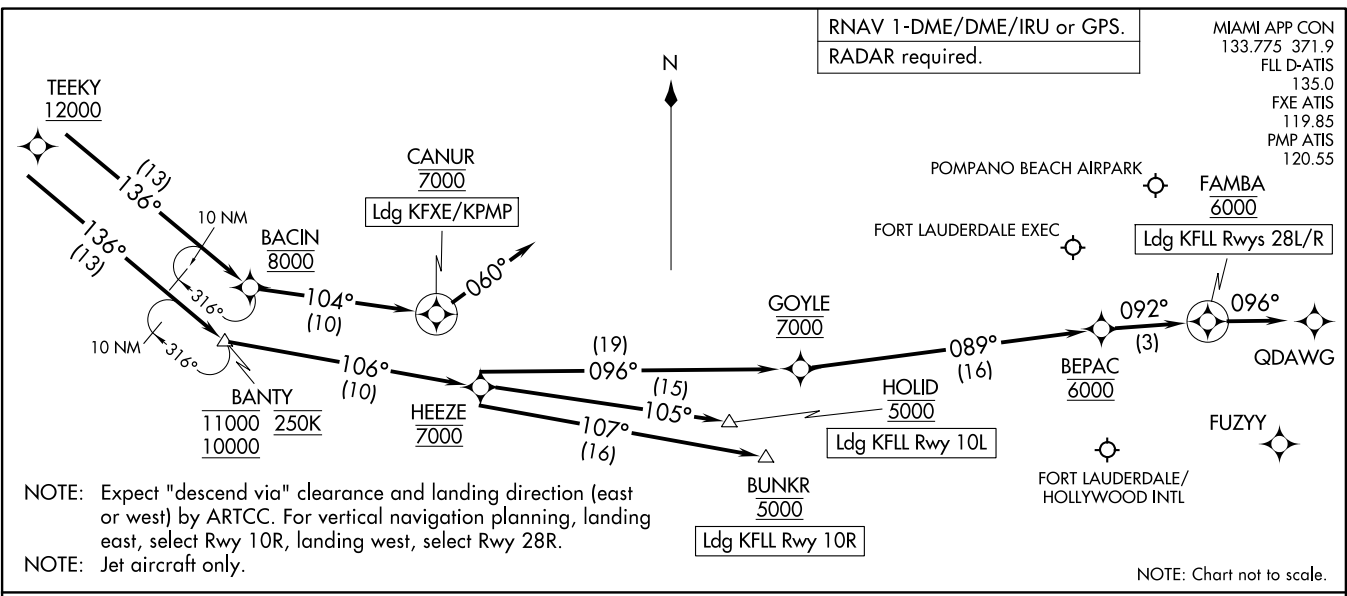
SE-3, 03 OCT 2024 to 31 OCT 2024

TEEKY THREE ARRIVAL (RNAV) Transition Routes FORT LAUDERDALE, FLORIDA

TEEKY THREE ARRIVAL (RNAV)
(TEEKY, TEEKY3) 03NOV22

Arrival Routes

FORT LAUDERDALE, FLORIDA



NOTE: Expect "descend via" clearance and landing direction (east or west) by ARTCC. For vertical navigation planning, landing east, select Rwy 10R, landing west, select Rwy 28R.
NOTE: Jet aircraft only.

NOTE: Chart not to scale.

ARRIVAL ROUTE DESCRIPTION

- FLL: From TEEKY on track 136° to cross BANTY between 10000 and 11000 and at 250K, then on track 106° to cross HEEZE at 7000.
- LANDING KFL RUNWAY 10L: From HEEZE on track 105° to cross HOLID at 5000. Expect ILS or LOC Rwy 10L approach.
- LANDING KFL RUNWAY 10R: From HEEZE on track 107° to cross BUNKR at 5000. Expect ILS or LOC Rwy 10R approach.
- LANDING KFL RUNWAYS 28L/R: From HEEZE on track 096° to cross GOYLE at 7000, then on track 089° to cross BEPAC at 6000, then on track 092° to cross FAMB 6000, then on track 096° to cross QDAWG. Expect RADAR vectors to final approach course.
- LANDING KFXE/KPMP: From TEEKY on track 136° to cross BACIN at 8000, then on track 104° to cross CANUR at 7000, then on heading 060°. Expect RADAR vectors to final approach course.

(TEEKY, TEEKY3) 22307

Arrival Routes

FORT LAUDERDALE, FLORIDA

AL-744 (FAA)