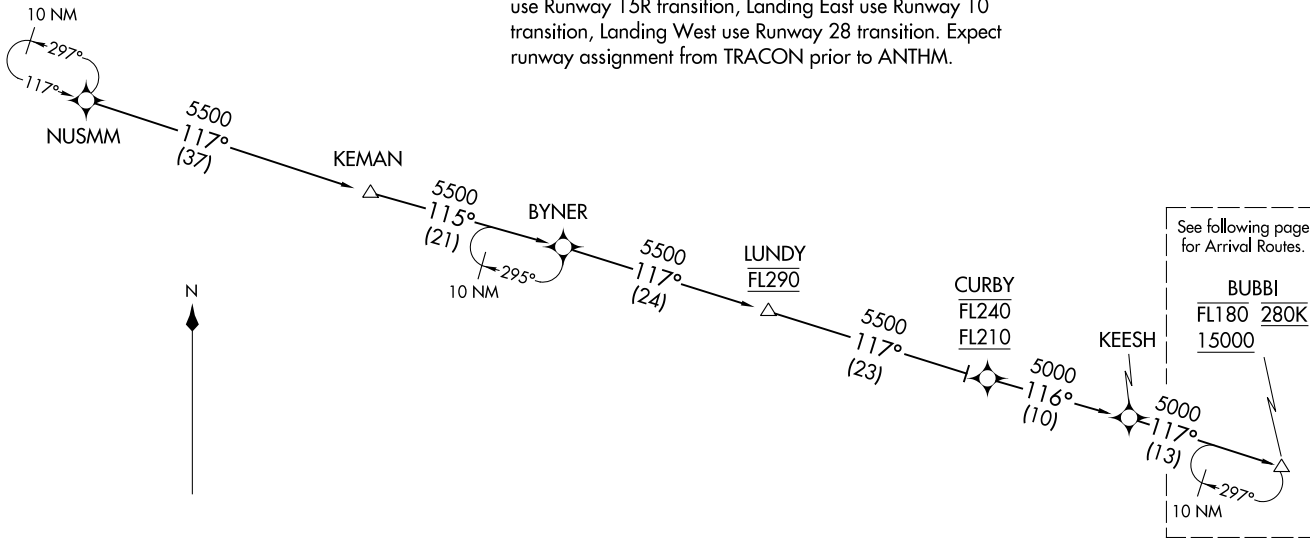


RNAV 1 - DME/DME/IRU or GPS.
RADAR required.

- NOTE: Jet aircraft only.
- NOTE: PROHIBITED AREA (P-56) 1.5 NM north of DCA avoid surface to 18000 MSL.
- NOTE: Landing North use Runway 33L transition, Landing South use Runway 15R transition, Landing East use Runway 10 transition, Landing West use Runway 28 transition. Expect runway assignment from TRACON prior to ANTHM.

ANTHM FOUR ARRIVAL (RNAV) Transition Routes
(BUBBI.ANTHM4) 055EP24

(BUBBI.ANTHM4) 24249
ANTHM FOUR ARRIVAL (RNAV) Transition Routes



AL-804 (FAA)

BALTIMORE, MARYLAND

KEESH TRANSITION (KEESH.ANTHM4)
 KEMAN TRANSITION (KEMAN.ANTHM4)
 NUSMM TRANSITION (NUSMM.ANTHM4)

(CONTINUED ON FOLLOWING PAGES)

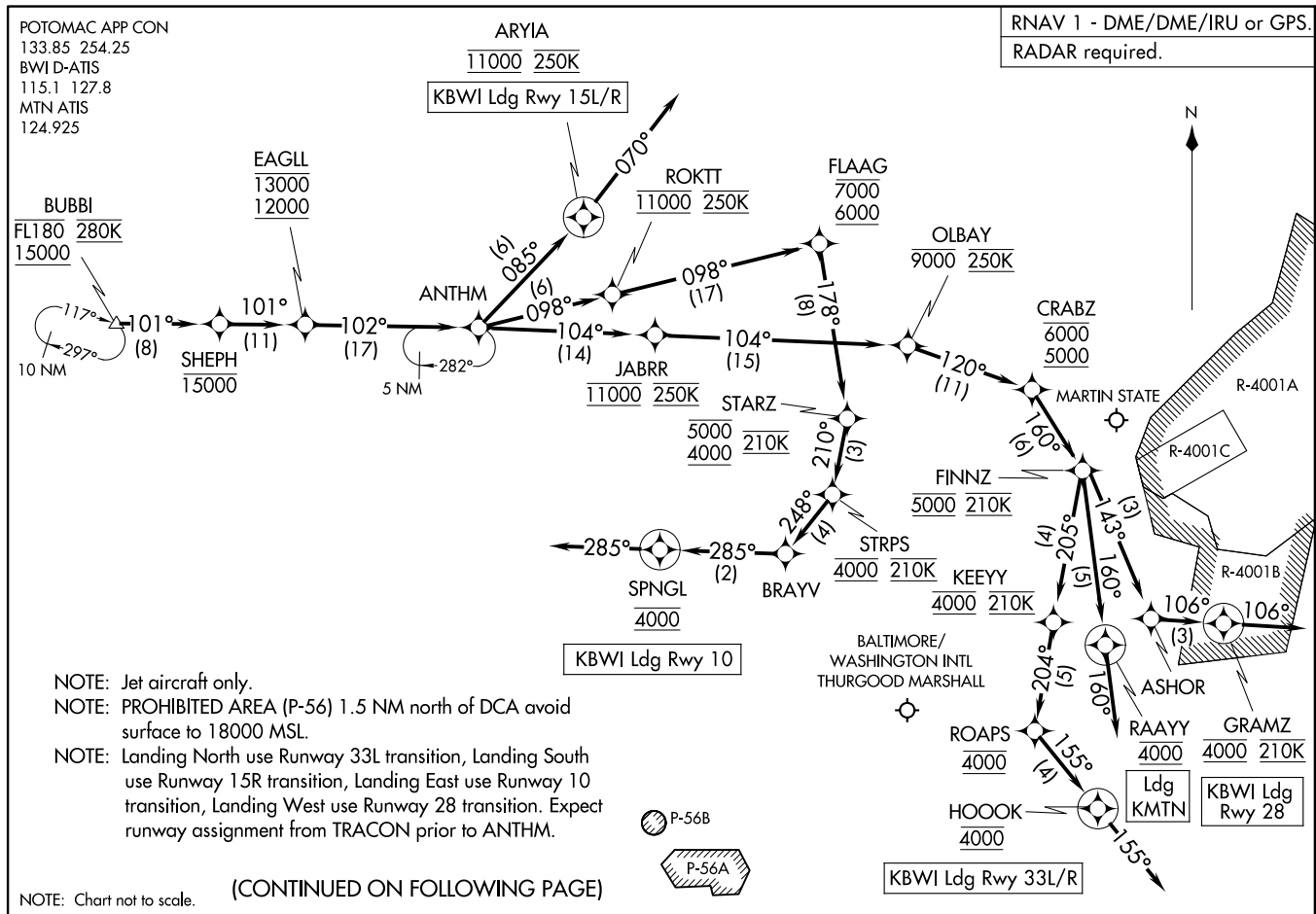
NOTE: Chart not to scale.

BALTIMORE, MARYLAND

(BUBBI,ANTHM4) 05SEP24

ANTHM FOUR ARRIVAL (RNAV) Arrival Routes

BALTIMORE, MARYLAND



(CONTINUED ON FOLLOWING PAGE)

NOTE: Chart not to scale.

(BUBBI,ANTHM4) 24Z249

ANTHM FOUR ARRIVAL (RNAV) Arrival Routes

BALTIMORE, MARYLAND

AL-804 (FAA)

ARRIVAL ROUTE DESCRIPTION

KBWI: From BUBBI on track 101° to cross SHEPH at or below 15000, then on track 101° to cross EAGLL between 12000 and 13000, then on track 102° to ANTHM.

LANDING KBWI RUNWAY 10: From ANTHM on track 098° to cross ROKTT at 11000 and at 250K, then on track 098° to cross FLAAG between 6000 and 7000, then on track 178° to cross STARZ between 4000 and 5000 and at 210K, then on track 210° to cross STRPS at 4000 and at 210K, then on track 248° to BRAYV, then on track 285° to cross SPNGL at 4000, then on heading 285°. Expect RADAR vectors to final approach course.

LANDING KBWI RUNWAY 15L/R: From ANTHM on track 085° to cross ARYIA at 11000 and at 250K, then on heading 070°. Expect RADAR vectors to final approach course.

LANDING KBWI RWY 28: From ANTHM on track 104° to cross JABRR at 11000 and at 250K, then on track 104° to cross OLBAY at or below 9000 and at 250K, then on track 120° to cross CRABZ between 5000 and 6000, then on track 160° to cross FINNZ at 5000 and at 210K, then on track 143° to ASHOR, then on track 106° to cross GRAMZ at 4000 and at 210K, then on track 106°. Expect RADAR vectors to final approach course.

LANDING KBWI RUNWAY 33L/R: From ANTHM on track 104° to cross JABRR at 11000 and at 250K, then on track 104° to cross OLBAY at or below 9000 and at 250K, then on track 120° to cross CRABZ between 5000 and 6000, then on track 160° to cross FINNZ at 5000 and at 210K, then on track 205° to cross KEEYY at 4000 and at 210K, then on track 204° to cross ROAPS at 4000, then on track 155° to cross HOOK at 4000, then on track 155°. Expect RADAR vectors to final approach course.

LANDING KMTN: From BUBBI on track 101° to cross SHEPH at or below 15000, then on track 101° to cross EAGLL between 12000 and 13000, then on track 102° to ANTHM, then on track 104° to cross JABRR at 11000 and at 250K, then on track 104° to cross OLBAY at or below 9000 and at 250K, then on track 120° to cross CRABZ between 5000 and 6000, then on track 160° to cross FINNZ at 5000 and at 210K, then on track 160° to cross RAAYY at 4000, then on track 160°. Expect RADAR vectors to final approach course.

NE-3, 03 OCT 2024 to 31 OCT 2024

NE-3, 03 OCT 2024 to 31 OCT 2024