

LOC I-FND 111.7	APP CRS 155°	Rwy Idg TDZE Apt Elev	8301 138 143
---------------------------	------------------------	-----------------------------	---

BALTIMORE/
WASHINGTON INTL THURGOOD MARSHALL (BWI)
ILS or LOC RWY 15R

RNP APCH - GPS. From HUEYP or ZARTZ.

DME or RADAR required. RADAR required for procedure entry at KYULO or BMORE.

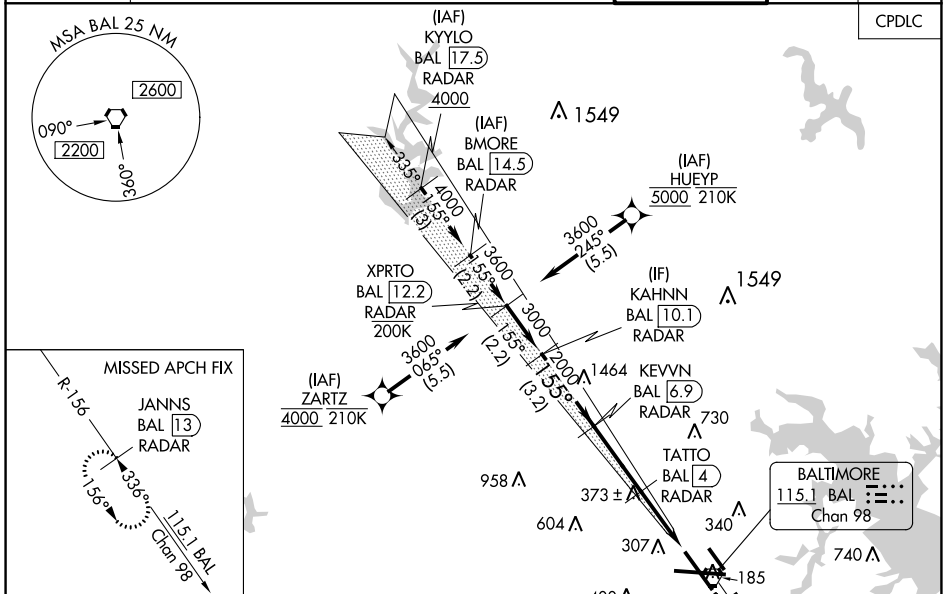
Simultaneous approach authorized with Rwy 15L. DME from BAL VORTAC.
For inop ALS, increase LOC Cat C/D visibility to 1 1/2 SM.
* RVR 1800 authorized with use of FD or AP or HUD to DA.



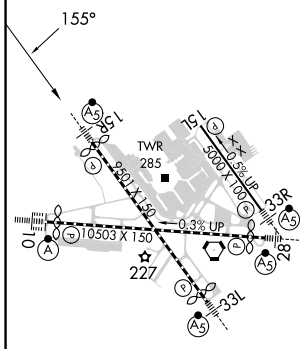
MISSED APPROACH: Climb to 2500 on BAL VORTAC R-156 to JANNIS/BAL 13 DME/RADAR and hold.

D-ATIS 115.1 127.8	POTOMAC APP CON (020°-100°) 119.0 282.275 (101°-130°) 124.55 317.425	(131°-180°) 119.7 290.475 (181°-019°) 307.9	BALTIMORE TOWER 119.4 257.8	GND CON 121.9	CLNC DEL 118.05
------------------------------	--	--	---------------------------------------	-------------------------	---------------------------

BALTIMORE TOWER 119.4 257.8	GND CON 121.9	CLNC DEL 118.05
---------------------------------------	-------------------------	---------------------------



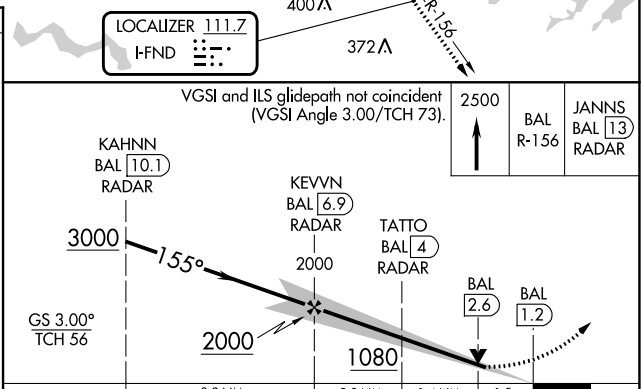
ELEV 143	D	TDZE 138
-----------------	----------	-----------------



TDZ/CL Rwy 10 and 33L
REIL Rwy 15L and 33R
HIRL all Rwy

FAF to MAP 5.7 NM

Knots	60	90	120	150	180
Min:Sec	5:42	3:48	2:51	2:17	1:54



CATEGORY	A	B	C	D
S-ILS 15R*	338/24 200 (200-1/2)			
S-LOC 15R	640/24	502 (500-1/2)	640/55	502 (500-1)
CIRCLING	640-1 497 (500-1)	660-1 517 (600-1)	700-1 1/2 557 (600-1 1/2)	880-2 1/4 737 (800-2 1/4)

NE-3, 03 OCT 2024 to 31 OCT 2024

NE-3, 03 OCT 2024 to 31 OCT 2024