

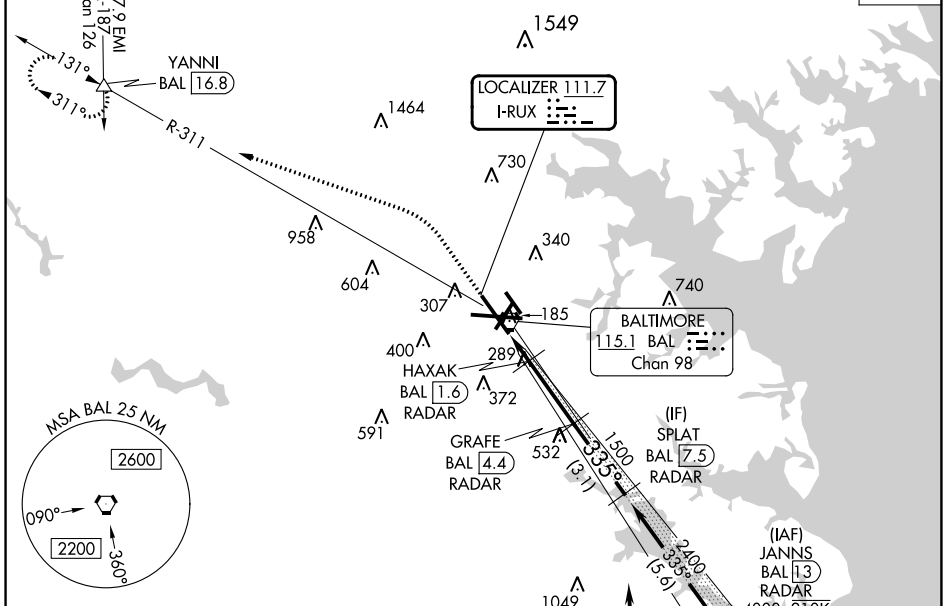
LOC I-RUX 111.7	APP CRS 335°	Rwy ldg TDZE Apt Elev	8301 143 143
---------------------------	------------------------	-----------------------------	---

BALTIMORE/ WASHINGTON INTL THURGOOD MARSHALL (BWI)

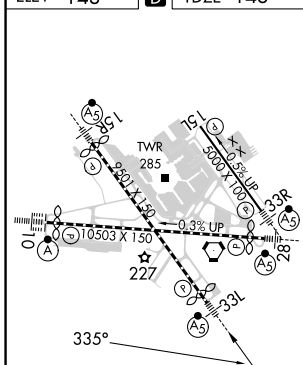
ILS or LOC RWY 33L

RNP APCH - GPS. From KOOLZ.
 RADAR required for procedure entry. DME or RADAR required.
 Simultaneous approach authorized with ILS or LOC Rwy 33R. DME from BAL
 VORTAC. DME use requires simultaneous reception of I-RUX and BAL DME.

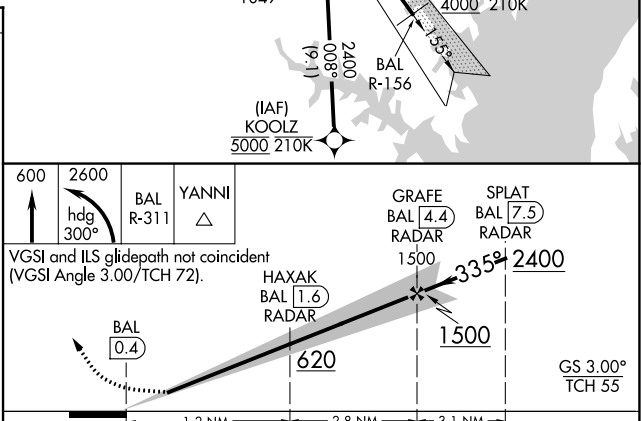
D-ATIS 115.1 127.8	POTOMAC APP CON (020°-100°) 119.0 282.275 (101°-130°) 124.55 317.425	(131°-180°) 119.7 290.475 (181°-019°) 128.7 307.9	BALTIMORE TOWER 119.4 257.8	GND CON 121.9	CLNC DEL 118.05
------------------------------	--	--	---------------------------------------	-------------------------	---------------------------



ELEV 143	D	TDZE 143
----------	----------	----------



FAF to MAP 4.1 NM					
Knots	60	90	120	150	180
Min:Sec	4:06	2:44	2:03	1:38	1:22



CATEGORY	A	B	C	D
S-ILS 33L		343/18	200 (200-1/2)	
S-LOC 33L	540/24	397 (400-1/2)	540/35	397 (400-3/8)
C CIRCLING	640-1 497 (500-1)	660-1 517 (600-1)	700-1 1/2 557 (600-1 1/2)	880-2 1/4 737 (800-2 1/4)

ILS or LOC RWY 33L

NE-3, 03 OCT 2024 to 31 OCT 2024

NE-3, 03 OCT 2024 to 31 OCT 2024