

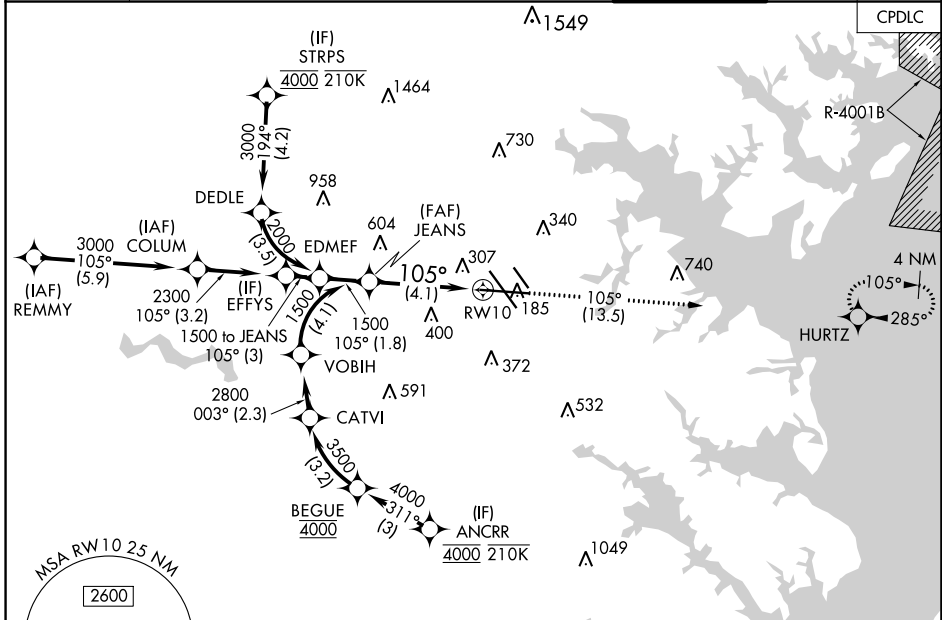
APP CRS	Rwy ldg	<b>9953</b>
<b>105°</b>	TDZE	<b>143</b>
	Apt Elev	<b>143</b>

# RNAV (RNP) Z RWY 10

BALTIMORE/WASHINGTON INTL THURGOOD MARSHALL (BWI)

RNP AR APCH - GPS.	ALSF-2	MISSED APPROACH: Climb to 2500 on track 105° to HURTZ and hold.
▼ For uncompensated Baro-VNAV systems, procedure NA below -11°C or above 54°C. For inop ALS, increase RNP 0.11 all Cats visibility to RVR 4500, increase RNP 0.30 all Cats visibility to 1 3/8 SM.		

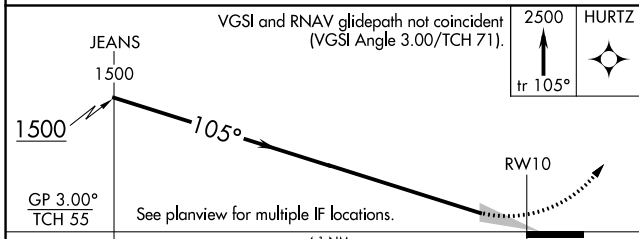
D-ATIS	POTOMAC APP CON	BALTIMORE TOWER	GND CON	CLNC DEL
<b>115.1 127.8</b>	<b>119.0 282.275</b> <b>124.55 317.425</b>	<b>119.4 257.8</b>	<b>121.9</b>	<b>118.05</b>
	(020°-100°) <b>119.7 290.475</b> (131°-180°) (101°-130°) <b>126.7 307.9</b> (181°-019°)			



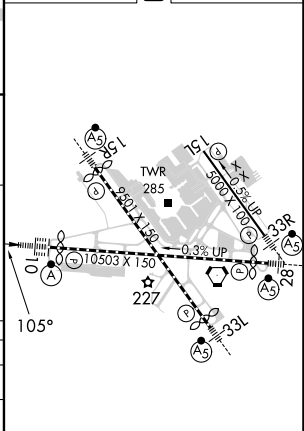
NE-3, 03 OCT 2024 to 31 OCT 2024

NE-3, 03 OCT 2024 to 31 OCT 2024

ELEV 143	<b>D</b>	TDZE 143
----------	----------	----------



	4.1 NM			
CATEGORY	A	B	C	D
RNP 0.11 DA		444/24	301 (400-1/2)	
RNP 0.30 DA		628/50	485 (500-1)	



TDZ/CL Rwys 10 and 33L  
REIL Rwys 15L and 33R  
HIRL all Rwys

## AUTHORIZATION REQUIRED

# RNAV (RNP) Z RWY 10