

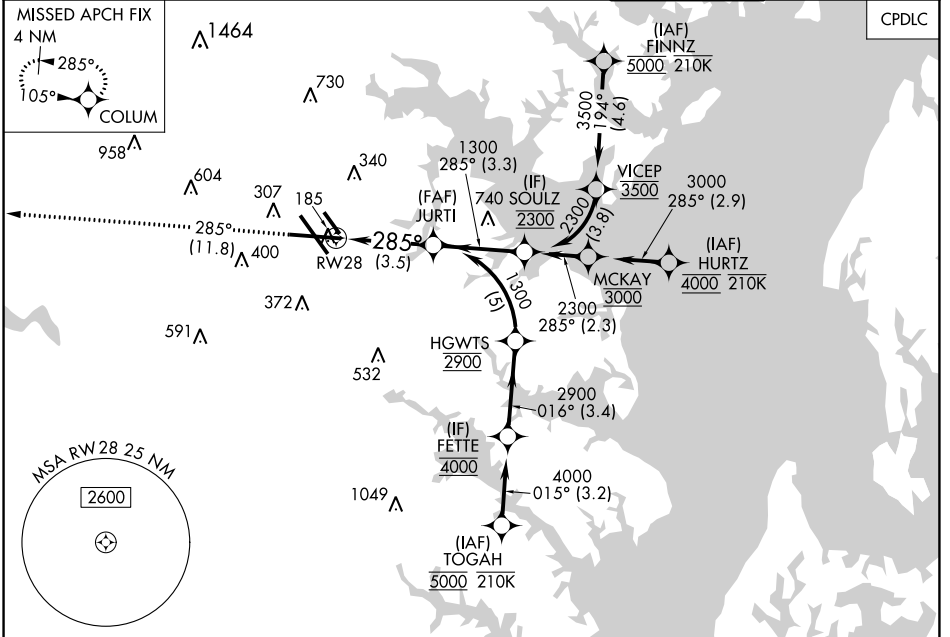
APP CRS 285°	Rwy Idg TDZE Apt Elev	9803 143 143
------------------------	-----------------------------	---

RNAV (RNP) Z RWY 28

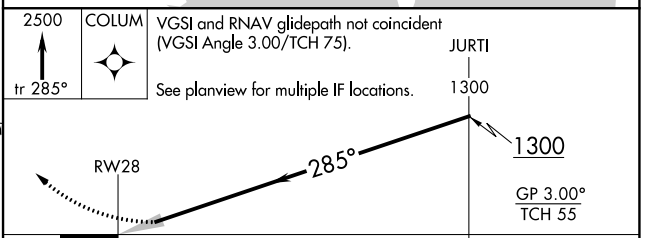
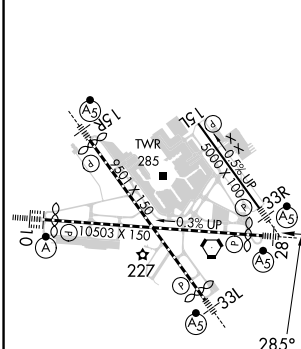
BALTIMORE/WASHINGTON INTL THURGOOD MARSHALL (BWI)

RNP AR APCH - GPS.	MALSR	MISSED APPROACH: Climb to 2500 on track 285° to COLUM and hold.
▼ For uncompensated Baro-VNAV systems, procedure NA below -11°C or above 54°C. For inop ALS, increase RNP 0.30 all Cals visibility to RVR 5500.		

D-ATIS 115.1 127.8	POTOMAC APP CON (020°-100°) 119.7 290.475 (131°-180°) (101°-130°) 128.7 307.9 (181°-019°)	BALTIMORE TOWER 119.4 257.8	GND CON 121.9	CLNC DEL 118.05
------------------------------	---	---------------------------------------	-------------------------	---------------------------



ELEV 143	D	TDZE 143
----------	----------	----------



CATEGORY	A	B	C	D
RNP 0.30 DA		521/35	378 (400-%)	

TDZ/CL Rws 10 and 33L
REIL Rws 15L and 33R
HIRL all Rws

RNAV (RNP) Z RWY 28

AUTHORIZATION REQUIRED

NE-3, 03 OCT 2024 to 31 OCT 2024

NE-3, 03 OCT 2024 to 31 OCT 2024