

# RNAV (RNP) Z RWY 33L

BALTIMORE/WASHINGTON INTL THURGOOD MARSHALL (BWI)

APP CRS <b>335°</b>	Rwy Idg TDZE Apt Elev	<b>8301</b> <b>143</b> <b>143</b>
------------------------	-----------------------------	---

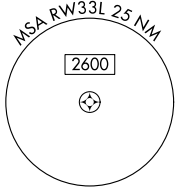
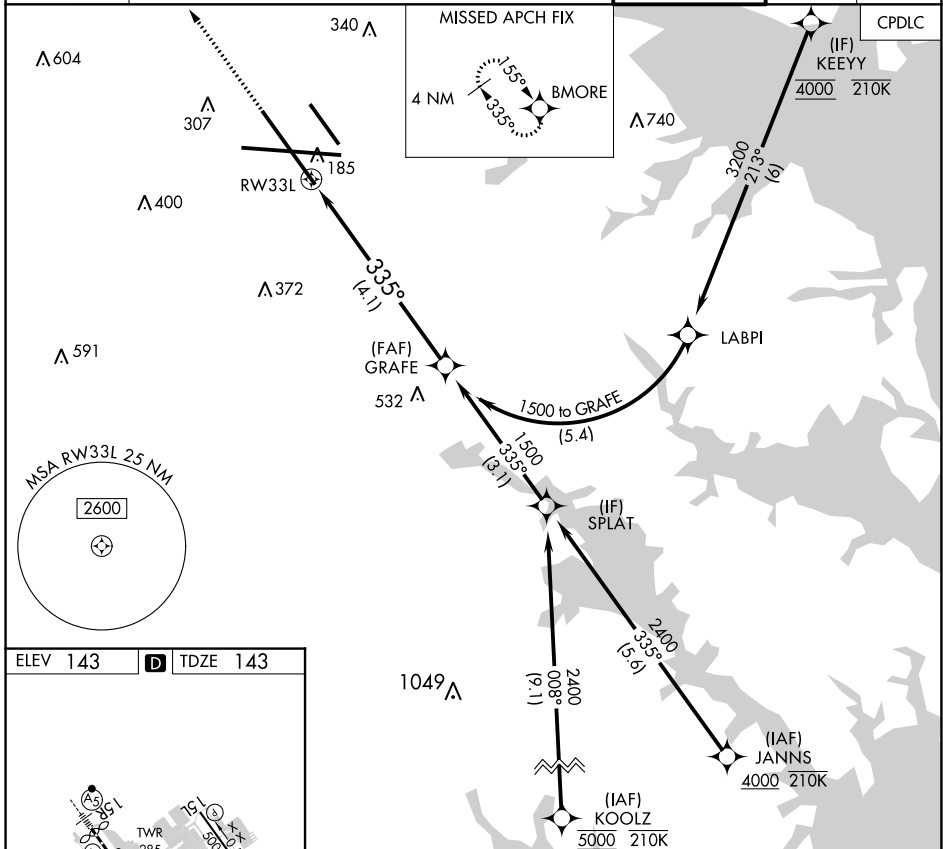
RNP APCH - GPS. From KEEYY: RF.

▼ For uncompensated Baro-VNAV systems, procedure NA below -11°C or above 54°C. For inop ALS, increase RNP 0.30 all Cats visibility to RVR 5500.

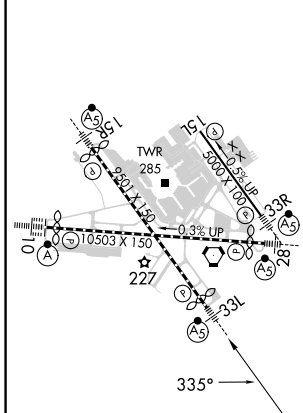
MALSR

MISSED APPROACH: Climb to 3000 direct BMORE and hold.

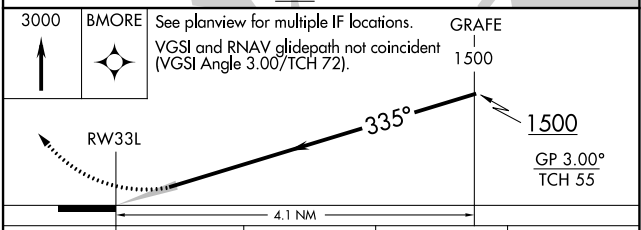
D-ATIS <b>115.1 127.8</b>	POTOMAC APP CON (020°-100°) <b>119.7 290.475</b> (131°-180°) (101°-130°) <b>128.7 307.9</b> (181°-019°)	BALTIMORE TOWER <b>119.4 257.8</b>	GND CON <b>121.9</b>	CLNC DEL <b>118.05</b>
------------------------------	---	---------------------------------------	-------------------------	---------------------------



ELEV 143	<b>D</b> TDZE 143
----------	-------------------



TDZ/CL Rwy 10 and 33L  
REIL Rwy 15L and 33R  
HIRL all Rwy



CATEGORY	A	B	C	D
RNP 0.30 DA	496/30	353	400-5%	

## AUTHORIZATION REQUIRED

# RNAV (RNP) Z RWY 33L

NE-3, 03 OCT 2024 to 31 OCT 2024

NE-3, 03 OCT 2024 to 31 OCT 2024