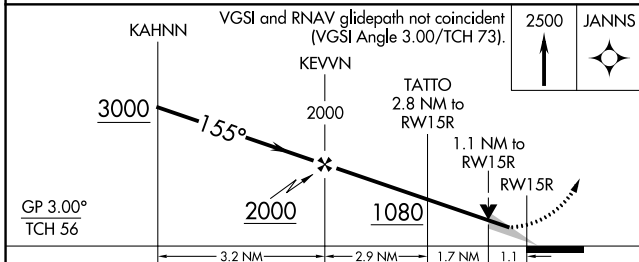
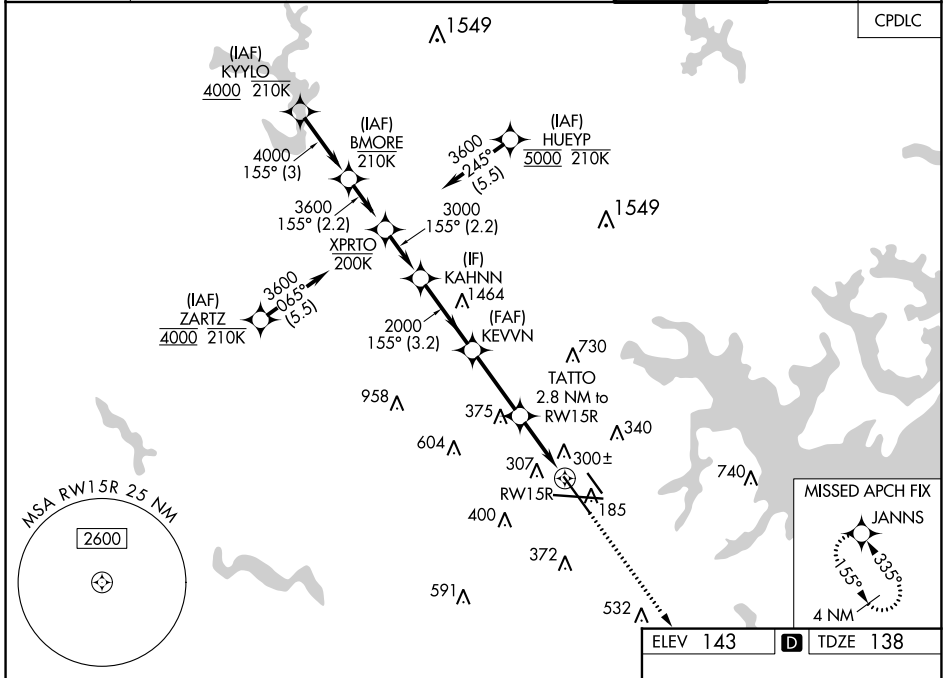


WAAS CH 66007 W15B	APP CRS 155°	Rwy Idg TDZE 138 Apt Elev 143	8301
--	------------------------	---	-------------

RNAV (GPS) Y RWY 15R

BALTIMORE/WASHINGTON INTL THURGOOD MARSHALL (BWI)

RNP APCH - GPS.		MALSR	MISSED APPROACH: Climb to 2500 direct JANNS and hold.		
<p>▼ For uncompensated Baro-VNAV systems, LNAV/VNAV NA below -11°C or above 54°C. ▲ Simultaneous approach authorized with Rwy 15L. For inop ALS, increase LNAV/VNAV all Cats visibility to RVR 6000. * RVR 1800 authorized with use of FD or AP or HUD to DA.</p>					
D-ATIS 115.1 127.8	POTOMAC APP CON 119.0 282.275 (020°-100°) 124.55 317.425 (101°-130°)	119.7 290.475 (131°-180°) 128.7 307.9 (181°-019°)	BALTIMORE TOWER 119.4 257.8	GND CON 121.9	CLNC DEL 118.05



ELEV 143	TDZE 138																																												
<table border="1"> <thead> <tr> <th>CATEGORY</th> <th>A</th> <th>B</th> <th>C</th> <th>D</th> </tr> </thead> <tbody> <tr> <td>LPV DA</td> <td colspan="2">*338/24</td> <td colspan="2">200 (200-½)</td> </tr> <tr> <td>LNAV/VNAV DA</td> <td colspan="2">557/40</td> <td colspan="2">419 (500-¾)</td> </tr> <tr> <td>LNAV MDA</td> <td colspan="2">560/24</td> <td colspan="2">560/40</td> </tr> <tr> <td></td> <td colspan="2">422 (500-½)</td> <td colspan="2">422 (500-¾)</td> </tr> <tr> <td rowspan="2">CIRCLING</td> <td colspan="2">640-1</td> <td colspan="2">700-1½</td> </tr> <tr> <td colspan="2">497 (500-1)</td> <td colspan="2">557 (600-1½)</td> </tr> <tr> <td></td> <td colspan="2">660-1</td> <td colspan="2">880-2¼</td> </tr> <tr> <td></td> <td colspan="2">517 (600-1)</td> <td colspan="2">737 (800-2¼)</td> </tr> </tbody> </table>		CATEGORY	A	B	C	D	LPV DA	*338/24		200 (200-½)		LNAV/VNAV DA	557/40		419 (500-¾)		LNAV MDA	560/24		560/40			422 (500-½)		422 (500-¾)		CIRCLING	640-1		700-1½		497 (500-1)		557 (600-1½)			660-1		880-2¼			517 (600-1)		737 (800-2¼)	
CATEGORY	A	B	C	D																																									
LPV DA	*338/24		200 (200-½)																																										
LNAV/VNAV DA	557/40		419 (500-¾)																																										
LNAV MDA	560/24		560/40																																										
	422 (500-½)		422 (500-¾)																																										
CIRCLING	640-1		700-1½																																										
	497 (500-1)		557 (600-1½)																																										
	660-1		880-2¼																																										
	517 (600-1)		737 (800-2¼)																																										
TDZ/CL Rwys 10 and 33L REIL Rwys 15L and 33R HIRL all Rwys																																													

NE-3, 03 OCT 2024 to 31 OCT 2024

NE-3, 03 OCT 2024 to 31 OCT 2024