

WAAS CH <b>82207</b> <b>W33A</b>	APP CRS <b>335°</b>	Rwy Idg TDZE <b>143</b> Apt Elev <b>143</b>	<b>8301</b> <b>143</b> <b>143</b>
--	------------------------	---	---

# RNAV (GPS) Y RWY 33L

BALTIMORE/WASHINGTON INTL THURGOOD MARSHALL (BWI)

RNP APCH-GPS.

**▽** For uncompensated Baro-VNAV systems, LNAV/VNAV NA below -11°C or above 54°C.

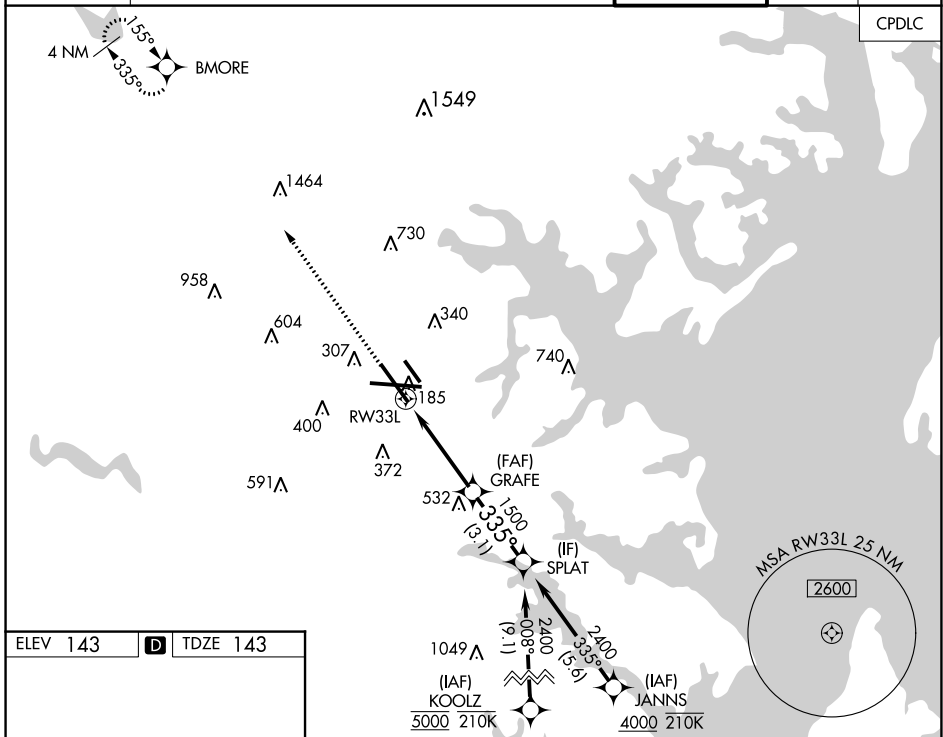
MALSR



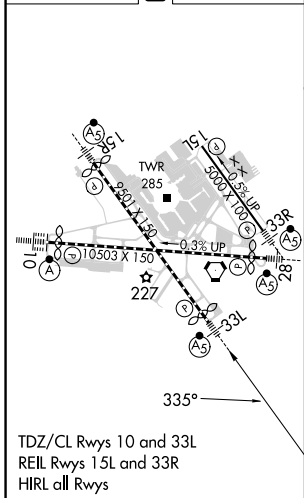
MISSED APPROACH: Climb to 3000 direct BMORE and hold.

D-ATIS <b>115.1 127.8</b>	POTOMAC APP CON (020°-100°) <b>119.0 282.275</b> (101°-130°) <b>124.55 317.425</b>	(131°-180°) <b>119.7 290.475</b> (181°-019°) <b>128.7 307.9</b>	<b>BALTIMORE TOWER</b> <b>119.4 257.8</b>	<b>GND CON</b> <b>121.9</b>	<b>CLNC DEL</b> <b>118.05</b>
------------------------------	--	--	--	--------------------------------	----------------------------------

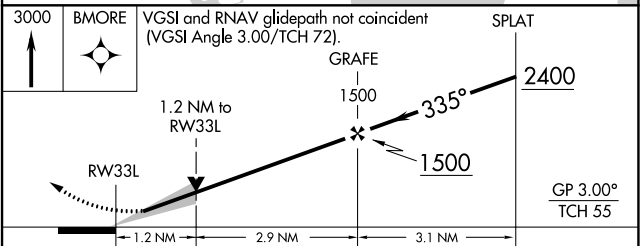
CPDLC



ELEV <b>143</b>	<b>D</b>	TDZE <b>143</b>
-----------------	----------	-----------------



TDZ/CL Rws 10 and 33L  
REIL Rws 15L and 33R  
HIRL all Rws



CATEGORY	A	B	C	D
LPV DA		343/18	200 (200-½)	
LNAV/VNAV DA		432/24	289 (300-½)	
LNAV MDA	600/24	457 (500-½)	600/45	457 (500-¾)
<b>C</b> CIRCLING	640-1 497 (500-1)	660-1 517 (600-1)	700-1½ 557 (600-½)	880-2¼ 737 (800-2¼)

NE-3, 03 OCT 2024 to 31 OCT 2024

NE-3, 03 OCT 2024 to 31 OCT 2024