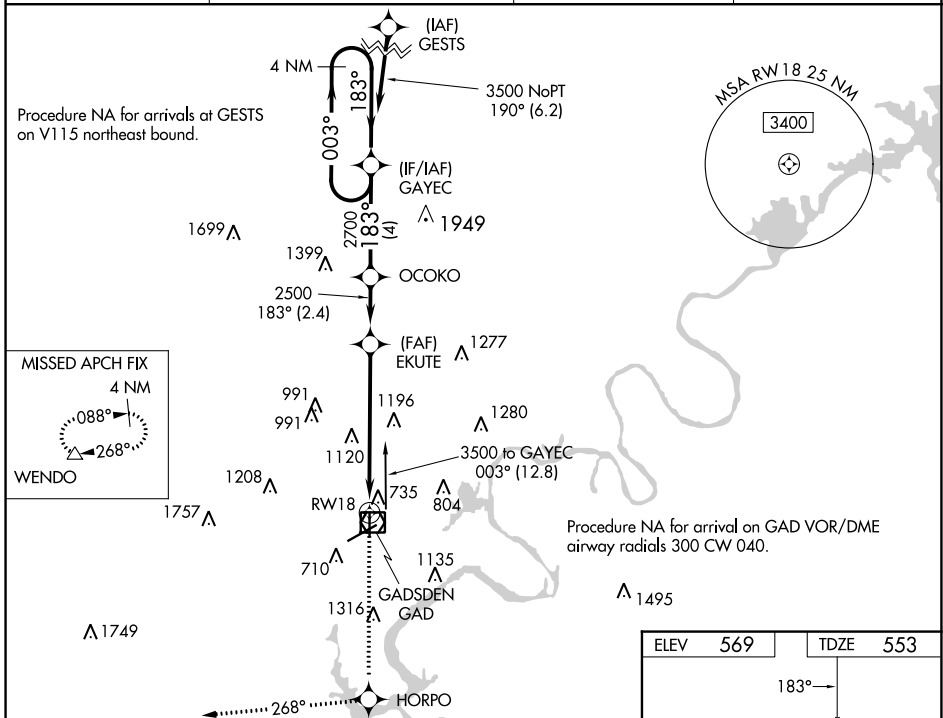


WAAS CH <b>90500</b> <b>W18A</b>	APP CRS <b>183°</b>	Rwy Idg TDZE Apt Elev	<b>4806</b> <b>553</b> <b>569</b>
--	------------------------	-----------------------------	---

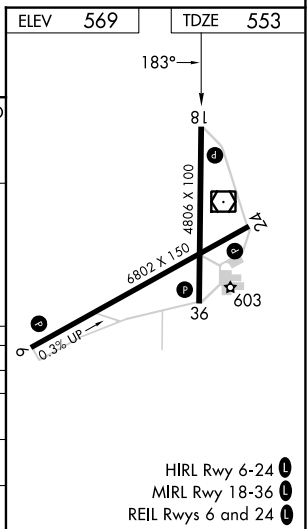
# RNAV (GPS) RWY 18

NORTHEAST ALABAMA RGNL (GAD)

RNP APCH		MISSED APPROACH: Climb to 3600 direct HORPO and on track 268° to WENDO and hold.	
Baro-VNAV NA when using Anniston altimeter setting. For uncompensated Baro-VNAV systems, LNAV/VNAV NA below -16°C or above 54°C. Rwy 18 helicopter visibility reduction below ¾ SM NA. When local altimeter not setting received, use Anniston altimeter setting and increase all DAs 66 feet and all MDAs 80 feet.			
AWOS-3PT <b>127.825</b>	BIRMINGHAM APP CON <b>125.45 279.65</b>	CLNC DEL <b>120.05 257.7</b>	UNICOM <b>122.8 (CTAF)</b>



VGSi and RNAV glidepath not coincident (VGSi Angle 2.75/TCH 42).		3600	HORPO	WENDO
4 NM Holding Pattern		↑	✧	△
3500 ← 003°		→ 183°		
GP 3.00°		TCH 40		
2700		RWY 18		
4 NM		2.4 NM		6 NM
CATEGORY	A	B	C	D
LPV DA		847-1	294 (300-1)	
LNAV/VNAV DA		1539-4	986 (1000-4)	
LNAV MDA	1560-1¼ 1007 (1000-1¼)	1560-1½ 1007 (1000-1½)	1560-3	1007 (1000-3)
CIRCLING	1560-1¼ 991 (1000-1¼)	1560-1½ 991 (1000-1½)	1560-3 991 (1000-3)	1680-3 1111 (1200-3)



SE-4, 03 OCT 2024 to 31 OCT 2024

SE-4, 03 OCT 2024 to 31 OCT 2024