

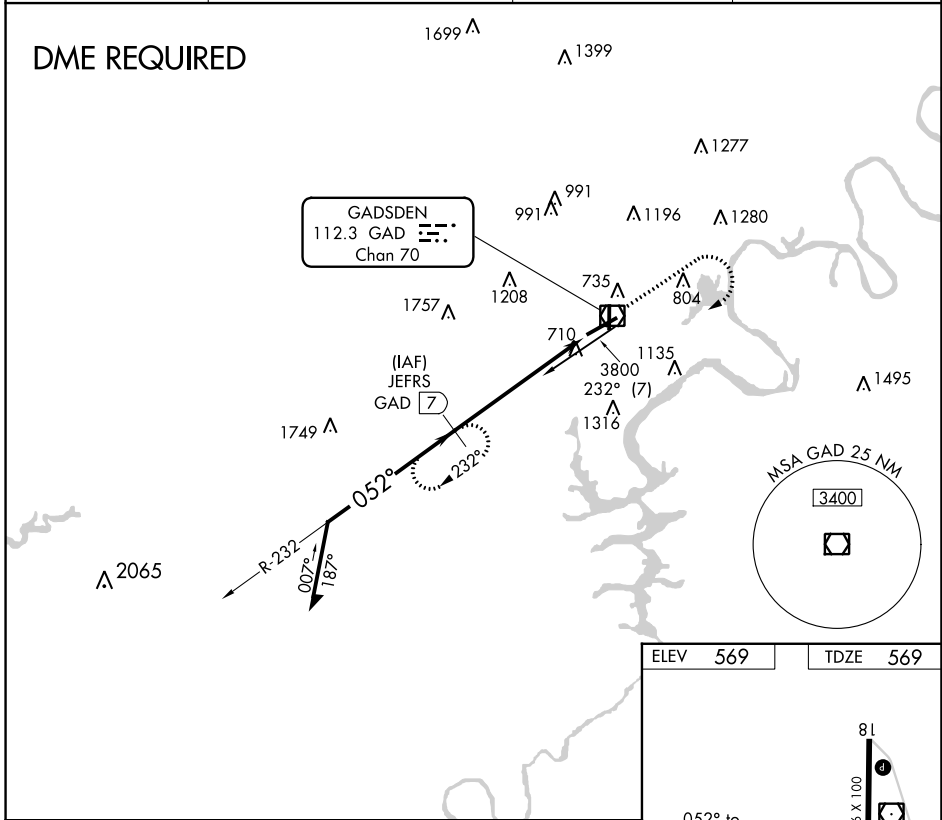
VOR/DME GAD 112.3 Chan 70	APP CRS 052°	Rwy Idg TDZE 569 Apt Elev 569	6802
---	------------------------	---	-------------

VOR RWY 6
NORTHEAST ALABAMA RGNL (GAD)

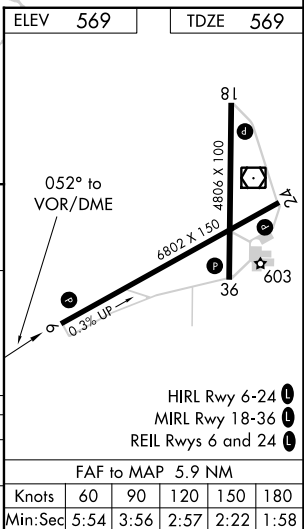
⚠ When local altimeter setting not received, use Anniston altimeter setting and increase all MDAs 80 feet; increase S-6 Cat C/D visibility ¼ mile and Circling Cat C ½ SM. VDP NA when using Anniston altimeter setting. DME required.

MISSED APPROACH: Climb to 2000 then climbing right turn to 3500 on GAD VOR/DME R-232 to JEFRS/7 DME and hold.

AWOS-3PT 127.825	BIRMINGHAM APP CON 125.45 279.65	CLNC DEL 120.05 257.7	UNICOM 122.8 (CTAF)
----------------------------	--	---------------------------------	-------------------------------



Remain within 10 NM	JEFRS GAD 7		2000	3500	JEFRS GAD 7
	3100	232°	GAD 2.2	GAD R-232	GAD 1.1
	052°	3.02° TCH 40	4.8 NM	1.1	
CATEGORY	A	B	C	D	
S-6	960-1	391 (400-1)	960-1 1/8	391 (400-1 1/8)	
CIRCLING	1100-1	531 (600-1)	1440-2 1/2 871 (900-2 1/2)	1680-3 1111 (1200-3)	



SE-4, 03 OCT 2024 to 31 OCT 2024

SE-4, 03 OCT 2024 to 31 OCT 2024

ELEV	569	TDZE	569		
FAF to MAP 5.9 NM					
Knots	60	90	120	150	180
Min:Sec	5:54	3:56	2:57	2:22	1:58