

WAAS CH 48810 W09B	APP CRS 095°	Rwy ldg 5000 TDZE 39 Apt Elev 55
--	------------------------	---

RNAV (GPS) RWY 9R

ORLANDO SANFORD INTL (SF'B)

RNP APCH.

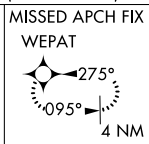
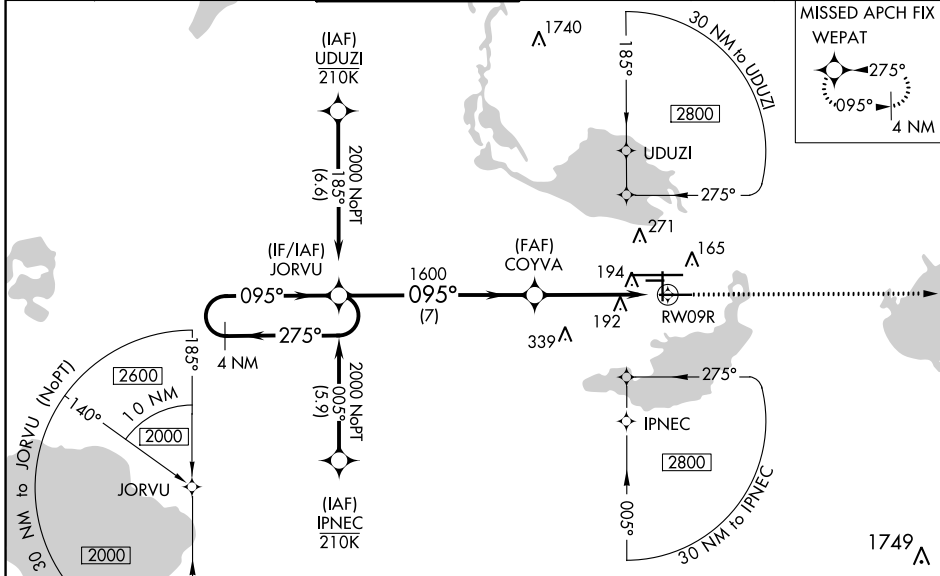
▼ For uncompensated Baro-VNAV systems, LNAV/VNAV NA below 0° C or above 54° C. Baro-VNAV and VDP NA when using Exec altimeter setting. When local altimeter setting not received, use Exec altimeter setting and increase LPV DA to 282, LNAV/VNAV DA to 501 and all MDA 60 feet; increase LNAV/VNAV all Cats visibilities 1/8 SM and LNAV Cat C/D visibility 1/4 SM. Night landing: Rwy 27C NA.

MALSR

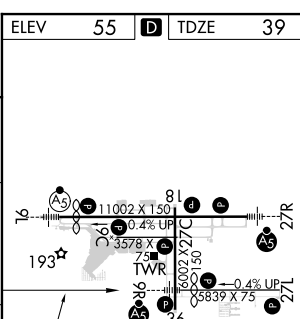
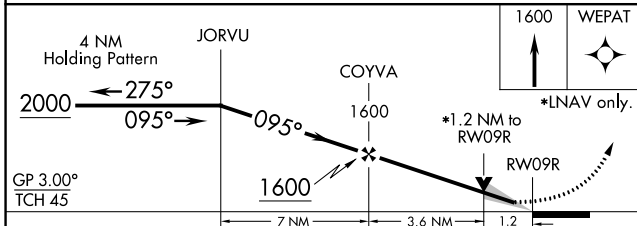


MISSED APPROACH: Climb to 1600 direct WEPAT and hold.

ATIS 125.975	ORLANDO APP CON 135.3 351.9 (NORTH) 119.775 351.9 (SOUTH)	SANFORD TOWER★ 120.3 (CTAF) 0 254.35	GND CON 121.35 254.35	CLNC DEL 123.975	CLNC DEL 121.35 (when twr closed)
------------------------	---	---	---------------------------------	----------------------------	--



ELEV	55	TDZE	39
------	----	------	----



CATEGORY	A	B	C	D
LPV DA	239-1/2		200 (200-1/2)	
LNAV/VNAV DA	458-1		419 (500-1)	
LNAV MDA	460-1/2 421 (500-1/2)		460-3/4 421 (500-3/4)	
CIRCLING	580-1 525 (600-1)		600-1/2 545 (600-1/2) 640-2 585 (600-2)	

MIRL Rwy 9C-27C and 18-36
HIRL Rwy 9L-27R and 9R-27L
REIL Rwy 9C, 18, 27L and 36

SE-3, 03 OCT 2024 to 31 OCT 2024

SE-3, 03 OCT 2024 to 31 OCT 2024