

WAAS CH 82605 W28A	APP CRS 276°	Rwy Idg TDZE 142 Apt Elev 142	8500
----------------------------------------	------------------------	---------------------------------------------------	-------------

RNAV (GPS) RWY 28

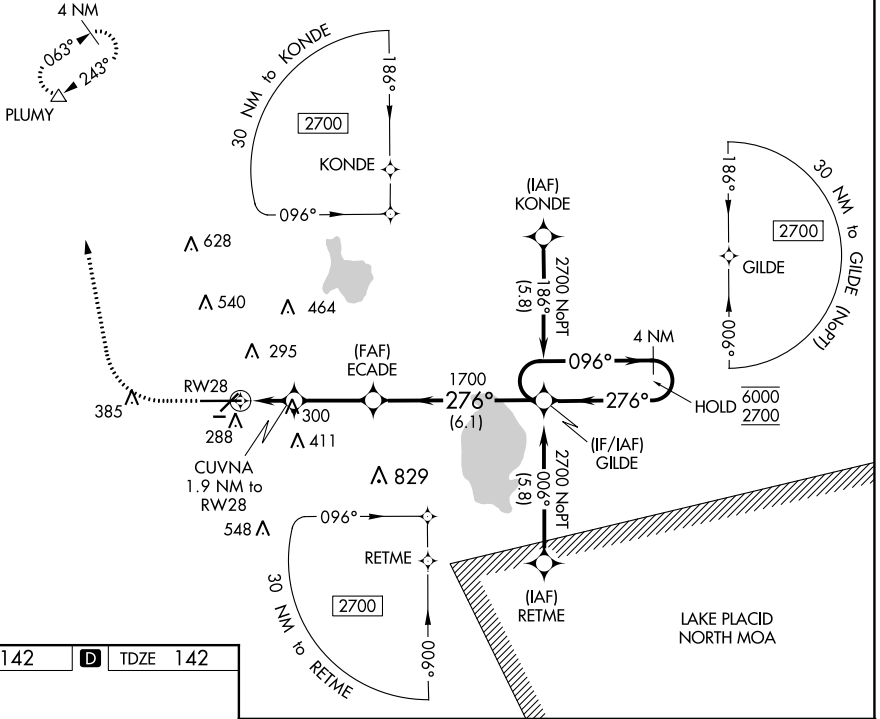
LAKELAND LINDER INTL (LAL)

RNP APCH-GPS.

▼ Rwy 28 helicopter visibility reduction below RVR 4000 NA.
▲ For uncompensated Baro-VNAV systems, LNAV/VNAV NA below -15°C or above 54°C. Circling NA to Rws 8 and 26.

MISSED APPROACH: Climb to 1000 then climbing right turn to 2000 direct PLUMY and hold.

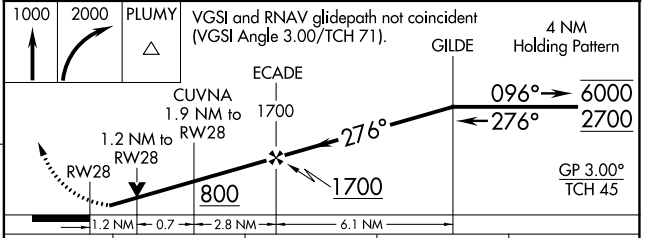
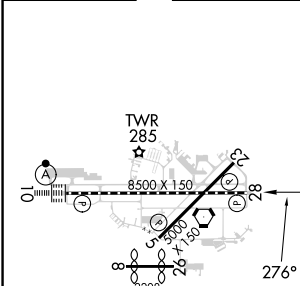
ATIS 118.025	TAMPA APP CON 120.65 290.3	LAKELAND TOWER 124.5 236.775	GND CON 121.4
------------------------	--------------------------------------	----------------------------------------	-------------------------



SE-3, 03 OCT 2024 to 31 OCT 2024

SE-3, 03 OCT 2024 to 31 OCT 2024

ELEV 142	D TDZE 142
----------	-------------------



CATEGORY	A	B	C	D
LPV DA		392/40	250 (300-¾)	
LNAV/VNAV DA		525/60	383 (400-1¼)	
LNAV MDA	600/55	458 (500-1)	600-1¾	458 (500-1¾)
C CIRCLING	600-1 458 (500-1)	660-1 518 (600-1)	720-1½ 578 (600-1½)	840-2¼ 698 (700-2¼)

TDZ/CL Rwy 10
HIRL Rws 5-23 and 10-28