

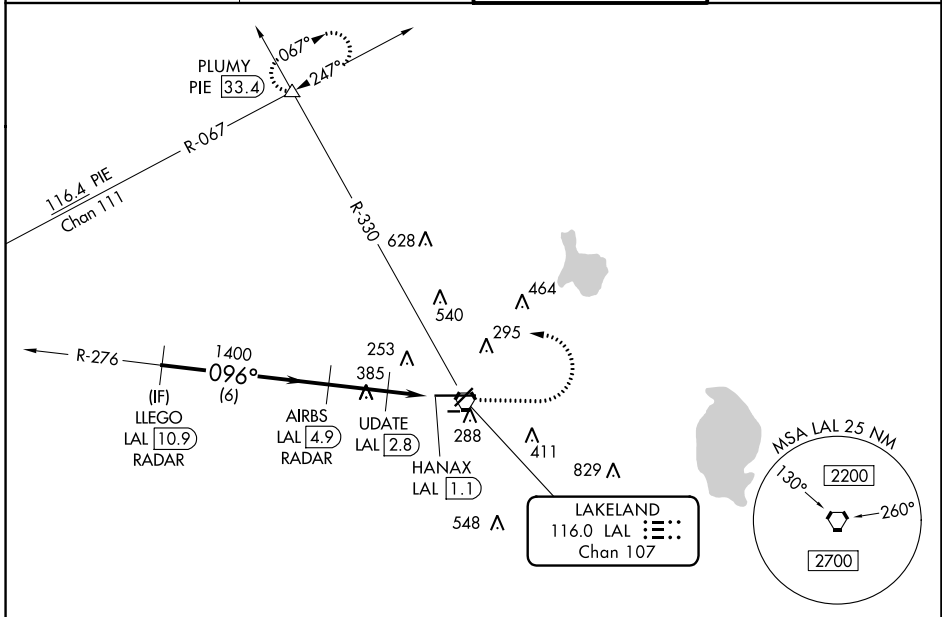
VORTAC LAL <b>116.0</b> Chan <b>107</b>	APP CRS <b>096°</b>	Rwy Idg <b>8500</b> TDZE <b>132</b> Apt Elev <b>142</b>
---	------------------------	---

# VOR RWY 10

LAKELAND LINDER INTL (LAL)

RADAR required for procedure entry. DME or RADAR required.		ALSF-2 	MISSED APPROACH: Climb to 1000 then climbing left turn to 2000 on heading 294° and on LAL VORTAC R-330 to PLUMY INT/ PIE 33.4 DME and hold.
<p> Circling NA to Rwys 8 and 26. Circling Rwy 28 NA at night. For inop ALS, increase S-10 Cat C/D visibility to 1 1/2 SM; increase UPDATE fix minimums S-10 Cat C/D visibility to RVR 6000.</p>			

ATIS <b>118.025</b>	TAMPA APP CON <b>120.65 290.3</b>	LAKELAND TOWER <b>124.5 236.775</b>	GND CON <b>121.4</b>
------------------------	--------------------------------------	--	-------------------------



SE-3, 03 OCT 2024 to 31 OCT 2024

SE-3, 03 OCT 2024 to 31 OCT 2024

ELEV 142		D TDZE 132		
<p> VGSi and descent angles not coincident (VGSi Angle 3.00/TCH 71).</p>		<p> TWR 285 8500 X 150 5000 X 150 2208 X 60</p>		
<p>1000 2000 hdg 294°</p>		<p>LAL R-330 PLUMY</p>		
<p>2000 096° 1400 700</p>		<p>UPDATE LAL [2.8] HANAX LAL [1.1]</p>		
<p>6 NM 2.1 NM 0.7 1.1</p>		<p>096°</p>		
CATEGORY	A	B	C	D
S-10	700/24	568 (600-1/2)	700-1 1/4	568 (600-1 1/4)
CIRCLING	700-1	558 (600-1)	720-1 1/2 578 (600-1 1/2)	840-2 1/4 698 (700-2 1/4)
UPDATE FIX MINIMUMS				
S-10	540/24	408 (400-1/2)	540/40	408 (400-3/4)
CIRCLING	600-1 458 (500-1)	660-1 518 (600-1)	720-1 1/2 578 (600-1 1/2)	840-2 1/4 698 (700-2 1/4)
TDZ/CL Rwy 10 HIRL Rwys 5-23 and 10-28				
FAF to MAP 3.8 NM				
Knots 60 90 120 150 180				
Min:Seq 3:48 2:32 1:54 1:31 1:16				