

VOR/DME ALO 112.2 Chan 59	APP CRS 176°	Rwy Idg TDZE Apt Elev	6003 871 873
---	------------------------	-----------------------------	---

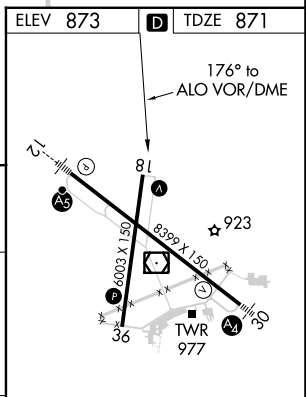
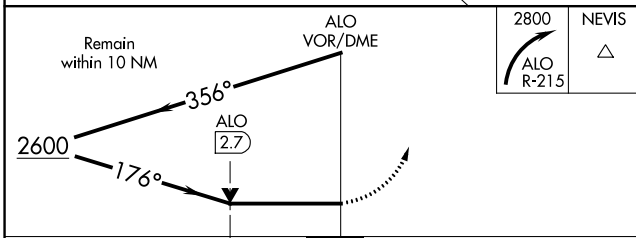
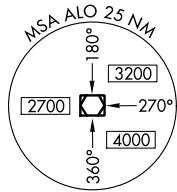
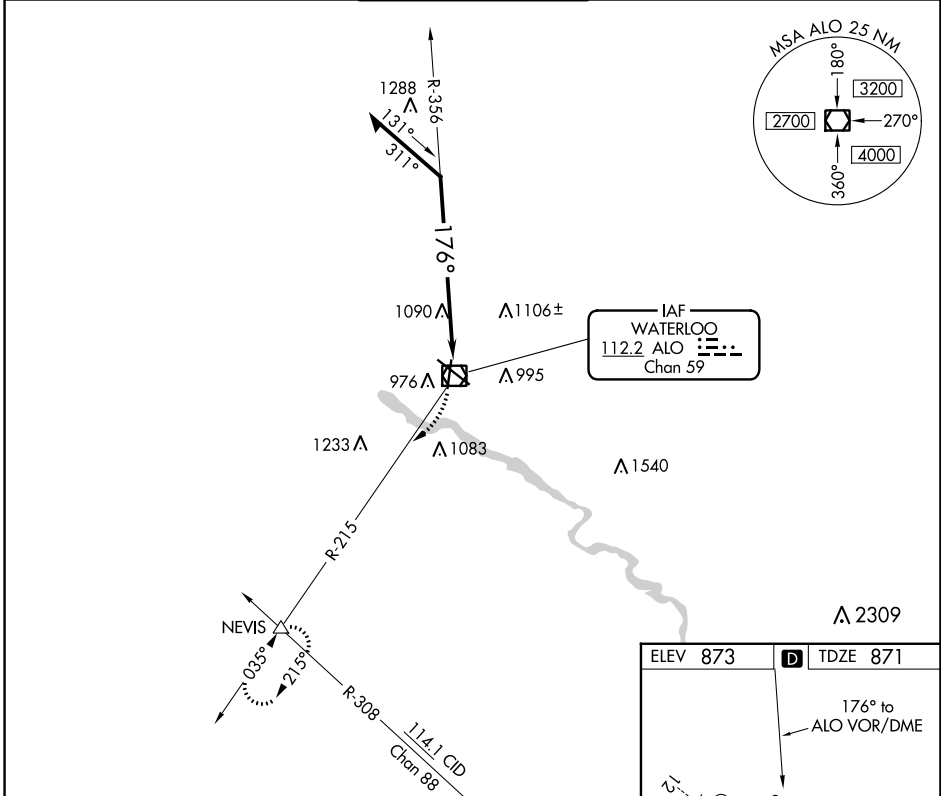
VOR RWY 18

WATERLOO RGNL (ALO)

⚠ Rwy 18 helicopter visibility reduction below 3/4 SM AN.

⚠ MISSED APPROACH: Climbing right turn to 2800 on ALO VOR/DME R-215 to NEVIS INT and hold.

ATIS 120.65	WATERLOO APP CON * 118.9 251.15	WATERLOO TOWER * 125.075 (CTAF) 257.8	GND CON 121.9 269.1	UNICOM 122.95
-----------------------	---	--	-------------------------------	-------------------------



CATEGORY	A	B	C	D
S-18	1600-1	729 (800-1)	1600-2	729 (800-2)
C CIRCLING	1600-1	727 (800-1)	1600-2 727 (800-2)	1600-2 1/4 727 (800-2 1/4)

HIRL Rwy 12-30 **Ⓛ**
MIRL Rwy 18-36 **Ⓛ**
REIL Rwy 18 and 36

NC-3, 03 OCT 2024 to 31 OCT 2024

NC-3, 03 OCT 2024 to 31 OCT 2024