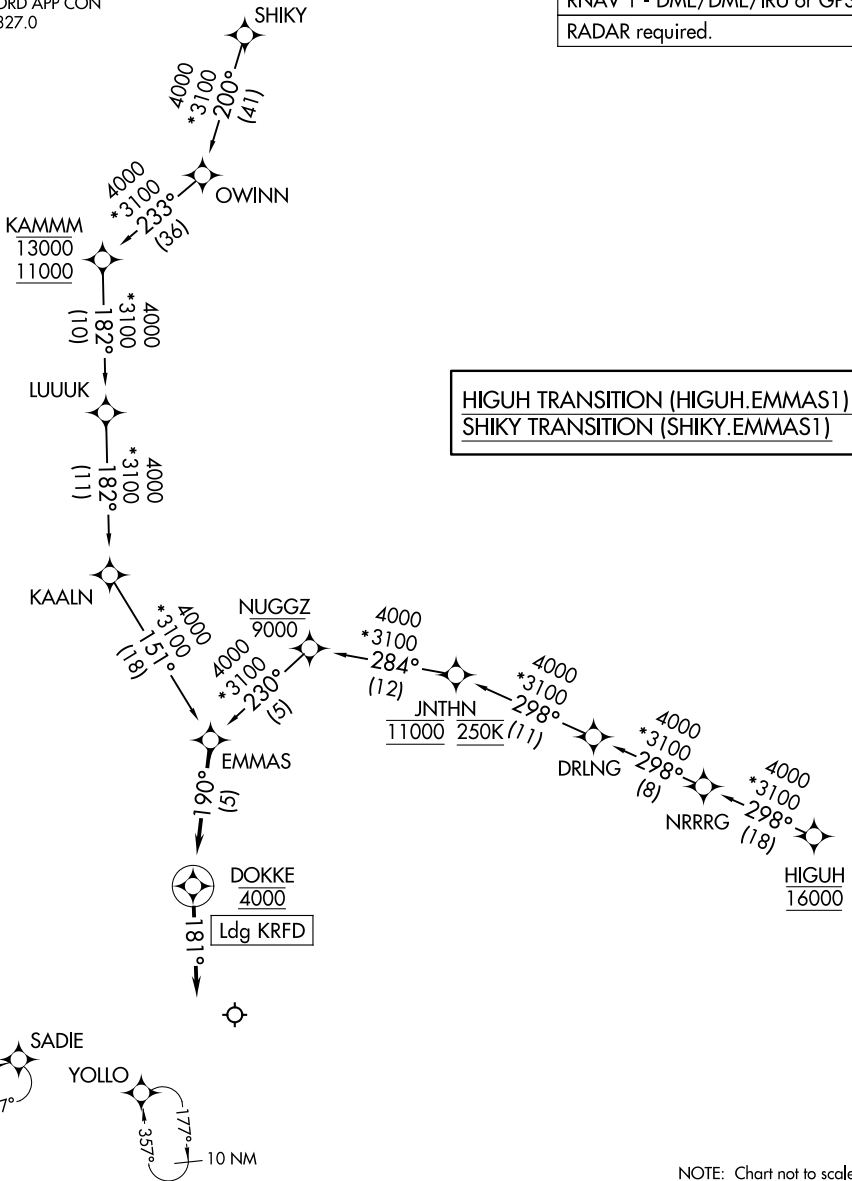


EMMAS ONE ARRIVAL (RNAV)

ROCKFORD APP CON
121.0 327.0
ATIS
127.6

RNAV 1 - DME/DME/IRU or GPS.
RADAR required.



HIGUH TRANSITION (HIGUH.EMMAS1)
SHIKY TRANSITION (SHIKY.EMMAS1)

EC-3, 03 OCT 2024 to 31 OCT 2024

EC-3, 03 OCT 2024 to 31 OCT 2024

NOTE: Chart not to scale.

ARRIVAL ROUTE DESCRIPTION

From EMMAS on track 190° to cross DOKKE at 4000, then on track 181°. Expect RADAR vectors to final approach course.