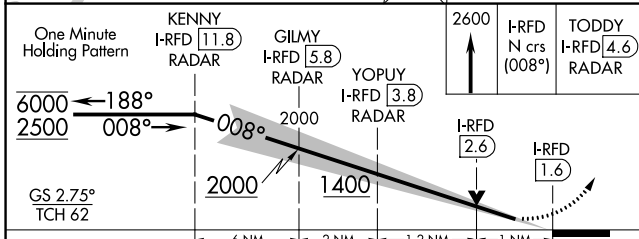
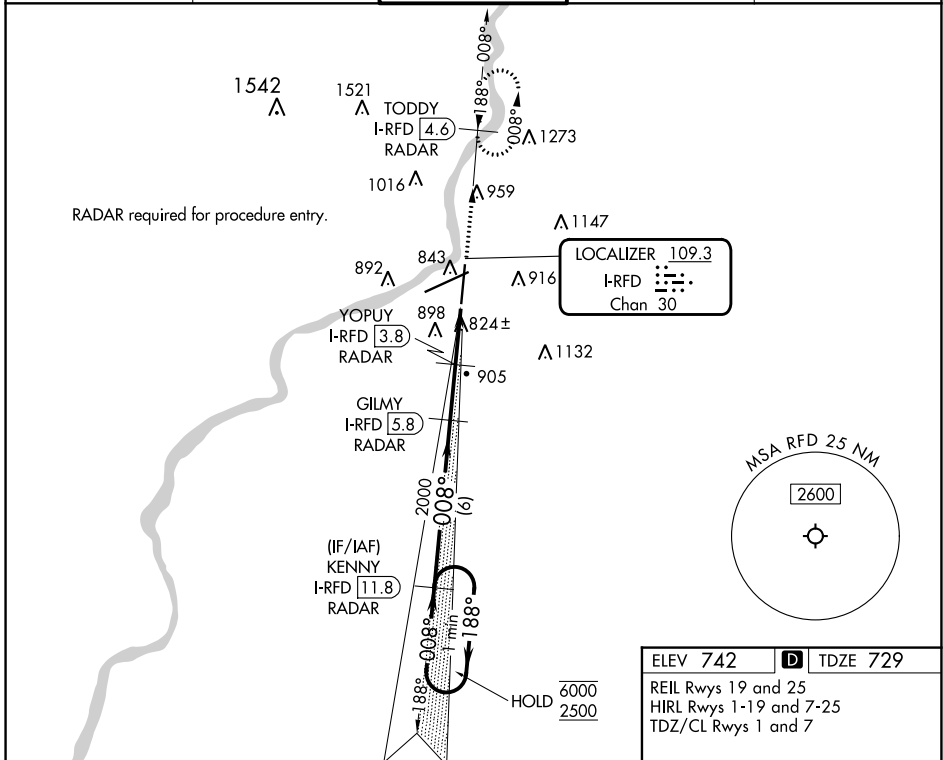


LOC/DME I-RFD 109.3 Chan 30	APP CRS 008°	Rwy Idg 8199 TDZE 729 Apt Elev 742
--	------------------------	---

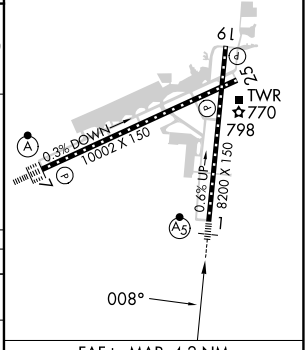
ILS or LOC RWY 1
CHICAGO/ROCKFORD INTL (RFD)

DME or RADAR required.		MALSR 	MISSED APPROACH: Climb to 2600 on I-RFD localizer N course (008°) to TODDY/4.6 DME/RADAR and hold, continue climb-in-hold to 2600.
	Inop table does not apply to S-ILS. For inop ALS, increase S-LOC 1 Cat C/D visibility to RVR 5500.		

ATIS 127.6	ROCKFORD APP CON 121.0 327.0	ROCKFORD TOWER 118.1 290.375	GND CON 121.9 290.375	CLNC DEL 119.25
----------------------	--	---	---------------------------------	---------------------------



ELEV 742	D TDZE 729
REIL Rwy's 19 and 25 HIRL Rwy's 1-19 and 7-25 TDZ/CL Rwy's 1 and 7	



CATEGORY	A	B	C	D
S-ILS 1	929/18		200 (200-½)	
S-LOC 1	1080/24	351 (400-½)	1080/30	351 (400-¾)
C CIRCLING	1220-1 478 (500-1)	1280-1 538 (600-1)	1320-1½ 578 (600-1½)	1460-2¼ 718 (800-2¼)

FAF to MAP 4.2 NM					
Knots	60	90	120	150	180
Min:Sec	4:12	2:48	2:06	1:41	1:24

EC-3, 03 OCT 2024 to 31 OCT 2024

EC-3, 03 OCT 2024 to 31 OCT 2024