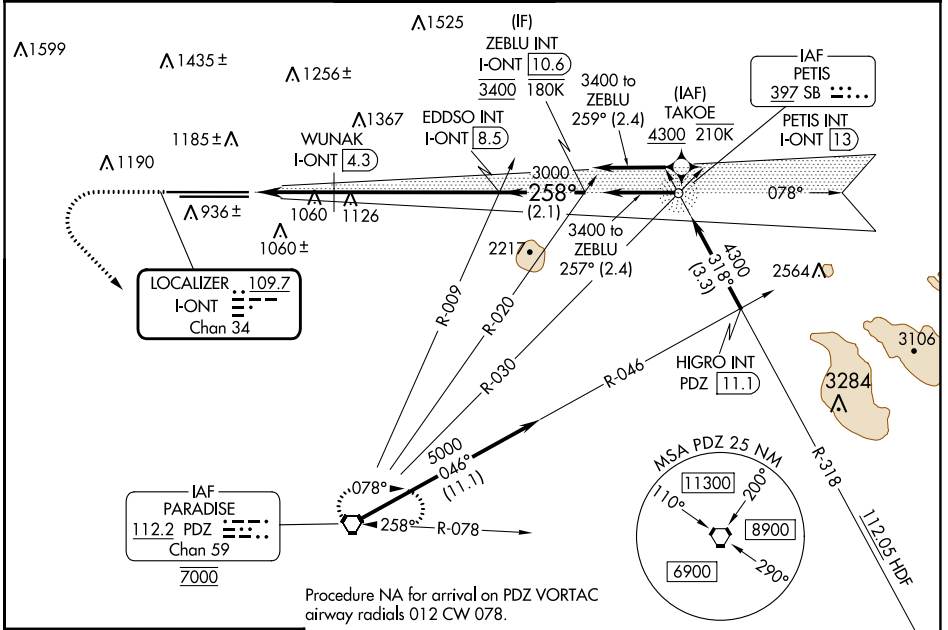


LOC/DME I-ONT 109.7 Chan 34	APP CRS 258°	Rwy Idg 26R 26L	TDZE 12197 932	10200 926
RNP APCH - GPS. From TAKOE.		Apt Elev 26R 26L	944	944

ILS or LOC RWY 26R

ONTARIO INTL (ONT)

MISSED APPROACH: Climb to 2800 then climbing left turn to 5400 direct PDZ VORTAC and hold, continue climb-in-hold to 5400.		ALSF-2 Rwy 26R	ALSF-2 Rwy 26L
D-ATIS 124.25	SOCAL APP CON 127.0 318.2	ONTARIO TOWER 120.6 360.775	GND CON 121.9 257.8
CPDLC		CLNC DEL 132.9	



ELEV 944	D TDZE 26R 932 TDZE 26L 926	2800	5400	PDZ	VGSI and ILS glidepath not coincident (VGSI Angle 3.00/TCH 75).	ZEBLU INT I-ONT [10.6]
		WUNAK I-ONT [4.3]		EDDSO INT I-ONT [8.5]		I-ONT [10.6]
TDZ/CL Rwy 8L, 26L and 26R HIRL Rwy 8L-26R and 8R-26L		CATEGORY				
FAF to MAP 6.3 NM		S-ILS 26R 1132/18 200 (200-½)				
TWR 1039		S-LOC 26R 1680/24 748 (800-½) 1680/40 748 (800-¾) 1680-1¾ 754 (800-1¾) 1680-2 754 (800-2)				
TDZ/CL Rwy 8L, 26L and 26R HIRL Rwy 8L-26R and 8R-26L		SIDESTEP 26L 1680/55 754 (800-1) 1680-1¾ 754 (800-1¾) 1680-2 754 (800-2)				
FAF to MAP 6.3 NM		C CIRCLING 1680-1 736 (800-1) 1680-1¼ 736 (800-1¼) 1680-2¼ 736 (800-2¼) 1680-2½ 736 (800-2½)				
WUNAK FIX MINIMUMS (DME REQUIRED)		S-LOC 26R 1320/24 388 (400-½) 1320/35 388 (400-⅝)				
Knots 60 90 120 150 180 Min:Sec 6:18 4:12 3:09 2:31 2:06		WUNAK FIX MINIMUMS (DME REQUIRED)				

SW-3, 03 OCT 2024 to 31 OCT 2024

SW-3, 03 OCT 2024 to 31 OCT 2024