

LOC I-AOD 109.7	APP CRS 078°	Rwy Idg 11200 8R 10200	8R 936
		TDZE 944	936
		Apt Elev 944	944

ILS or LOC RWY 8L

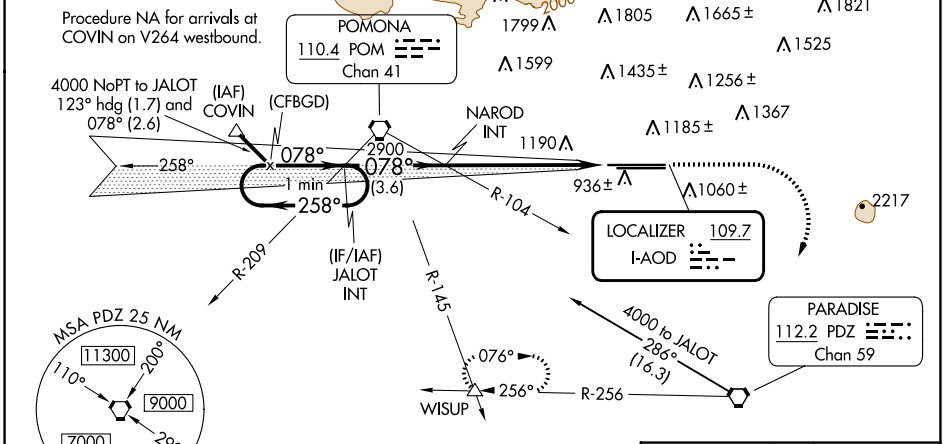
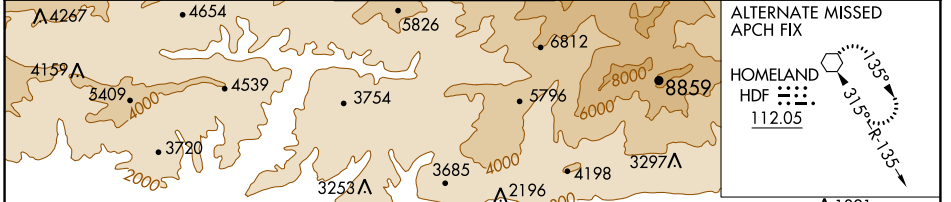
ONTARIO INTL (ONT)

⚠ Circling NA north of Rwy 8L-26R.
⚠ * RVR 1800 authorized with the use of FD or AP or HUD to DA.

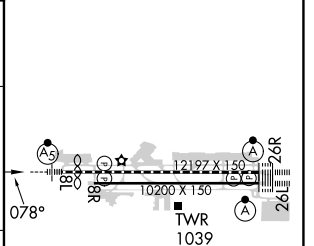
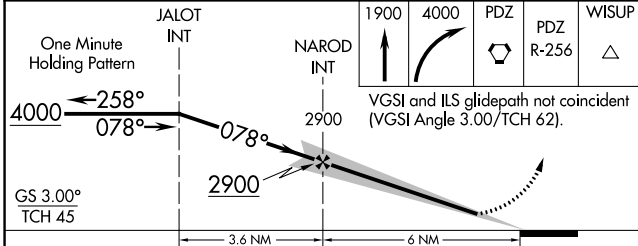
MALS Rwy 8L

MISSED APPROACH: Climb to 1900 then climbing right turn to 4000 direct PDZ VORTAC then on PDZ R-256 to WISUP INT and hold.

D-ATIS 124.25	SOCAL APP CON 127.0 318.2	ONTARIO TOWER 120.6 360.775	GND CON 121.9 257.8	CLNC DEL 132.9	CPDLC
-------------------------	-------------------------------------	---------------------------------------	-------------------------------	--------------------------	-------



ELEV 944	TDZE 8L 944	TDZE 8R 936
----------	-------------	-------------



CATEGORY	A	B	C	D
S-ILS 8L*	1144/24 200 (200-½)			
S-LOC 8L	1440/24 496 (500-½)		1440/50 496 (500-1)	
SIDESTEP 8R	1440-1 504 (500-1)		1440-1¾ 504 (500-1¾)	
C CIRCLING	1440-1 496 (500-1)		1540-1½ 596 (600-1½) 1600-2 656 (700-2)	

TDZ/CL Rwy 8L, 26R and 26L					
HIRL Rwy 8L-26R and 8R-26L					
FAF to MAP 6 NM					
Knots	60	90	120	150	180
Min:Sec	6:00	4:00	3:00	2:24	2:00

SW-3, 03 OCT 2024 to 31 OCT 2024

SW-3, 03 OCT 2024 to 31 OCT 2024