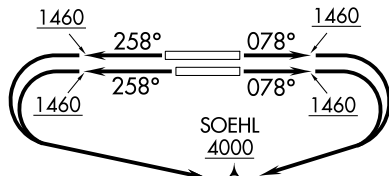
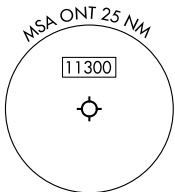


RNAV 1 - DME/DME/IRU or GPS: OTAYY, MTBAL and AVRRY Transitions.
RNAV 1 - GPS: DINTY and MALIT Transitions.
RADAR required for non-GPS equipped aircraft.

**TOP ALTITUDE
DINTY AND MALIT TRANSITIONS:
15000
ALL OTHER TRANSITIONS:
ASSIGNED BY ATC**

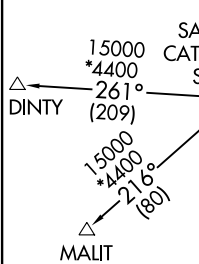
SOCAL DEP CON
135.4 377.125
D-ATIS
124.25
CLNC DEL
132.9
GND CON
121.9 257.8
ONTARIO TOWER
120.6 360.775



NOTE: Parachute jumping and ultralight activities over L65, 14500' and below, north of track between ELLBO and ARRDY.

TAKEOFF MINIMUMS

Rwys 8L/R, 26L/R: Standard with minimum climb of 500'/NM to 1460.



NOTE: Turbojet and turboprop aircraft only.
NOTE: MALIT and DINTY Transitions available between 2200 and 0600 local only.
NOTE: DINTY Transition ATC assigned only.

NOTE: Chart not to scale.

(CONTINUED ON FOLLOWING PAGE)

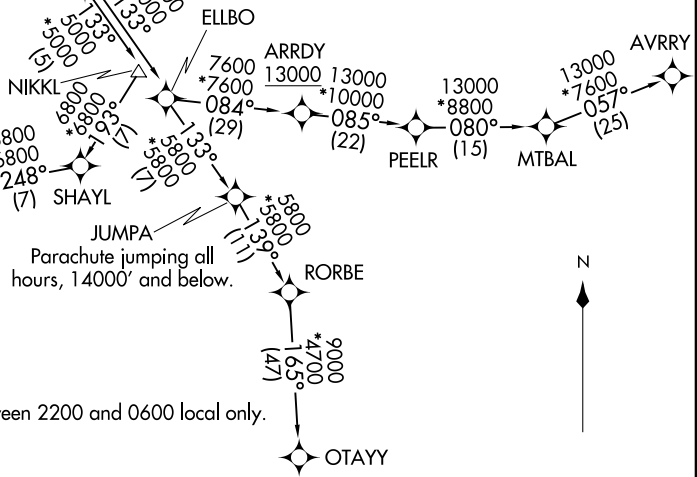
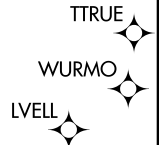
RAJEE FOUR DEPARTURE (RNAV)
(RAJEE4,RAJEE) 21MARP24

ONTARIO, CALIFORNIA
ONTARIO INTL (ONT)

(RAJEE4,RAJEE) 24081
RAJEE FOUR DEPARTURE (RNAV)

AL-965 (FAA)

ONTARIO INTL (ONT)
ONTARIO, CALIFORNIA





DEPARTURE ROUTE DESCRIPTION

TAKEOFF RUNWAYS 8L/R: Climb on heading 078° to 1460, then right turn direct to cross SOEHL at or above 4000, then on track 133° to cross RAJEE at 7000, thence

TAKEOFF RUNWAYS 26L/R: Climb on heading 258° to 1460, then left turn direct to cross SOEHL at or above 4000, then on track 133° to cross RAJEE at 7000, thence

. . . . on transition. DINTY and MALIT Transitions: Maintain 15000. All other transitions: maintain ATC assigned altitude. Expect higher altitude 10 minutes after departure.

AVRRY TRANSITION (RAJEE4.AVRRY)

DINTY TRANSITION (RAJEE4.DINTY)

MALIT TRANSITION (RAJEE4.MALIT)

MTBAL TRANSITION (RAJEE4.MTBAL)

OTAYY TRANSITION (RAJEE4.OTAYY)

SW-3, 03 OCT 2024 to 31 OCT 2024

SW-3, 03 OCT 2024 to 31 OCT 2024