

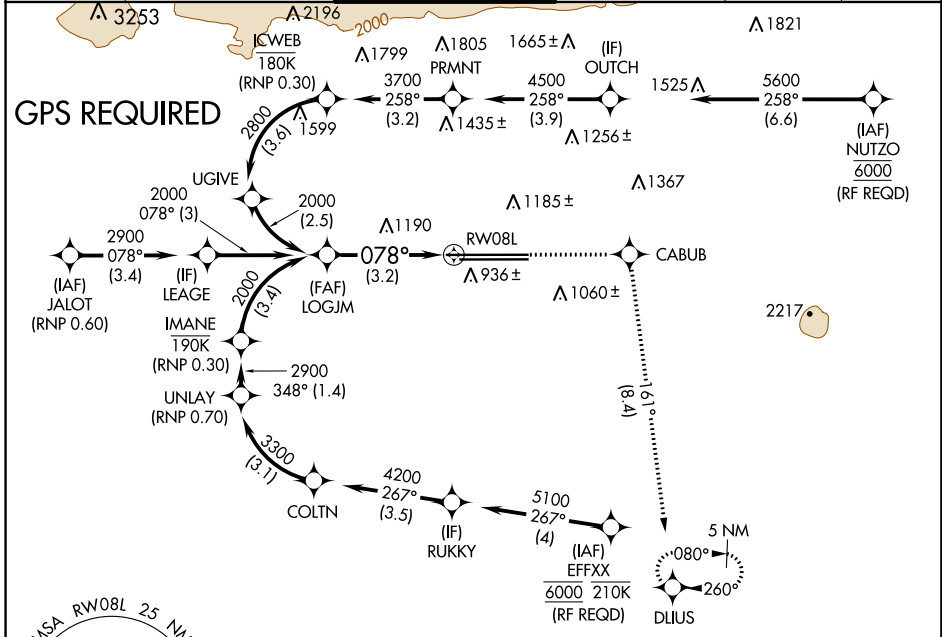
APP CRS	Rwy Idg	11200
078°	TDZE	944
	Apt Elev	944

RNAV (RNP) Z RWY 8L

ONTARIO INTL (ONT)

	For uncompensated Baro-VNAV systems, procedure NA below 2°C (36°F) or above 54°C (130°F).		MISSED APPROACH: Climb to 5300 direct CABUB on track 161° to DLIUS and hold, continue climb-in-hold to 5300.

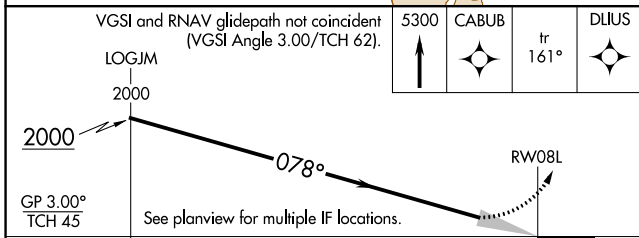
D-ATIS 124.25	SOCAL APP CON 127.0 318.2	ONTARIO TOWER 120.6 360.775	GND CON 121.9 257.8	CLNC DEL 132.9	CPDLC
-------------------------	-------------------------------------	---------------------------------------	-------------------------------	--------------------------	-------



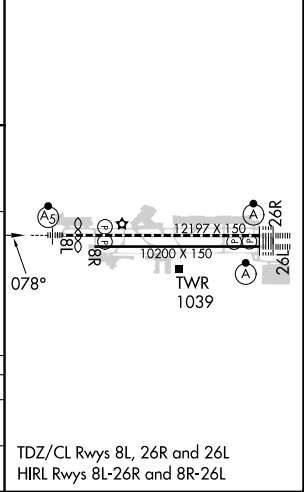
SW-3, 03 OCT 2024 to 31 OCT 2024

SW-3, 03 OCT 2024 to 31 OCT 2024

ELEV 944	TDZE 944
----------	----------



VGSi and RNAV glidepath not coincident (VGSi Angle 3.00/TCH 62). 	5300 CABUB	tr 161°	DLIUS	
CATEGORY	A	B	C	D
RNP 0.30 DA	1490-13 ³ / ₈		546 (600-1 ³ / ₈)	



AUTHORIZATION REQUIRED

TDZ/CL Rwy 8L, 26R and 26L
HIRL Rwy 8L-26R and 8R-26L