

APP CRS	Rwy Idg	<b>10200</b>
<b>078°</b>	TDZE	<b>936</b>
	Apt Elev	<b>944</b>

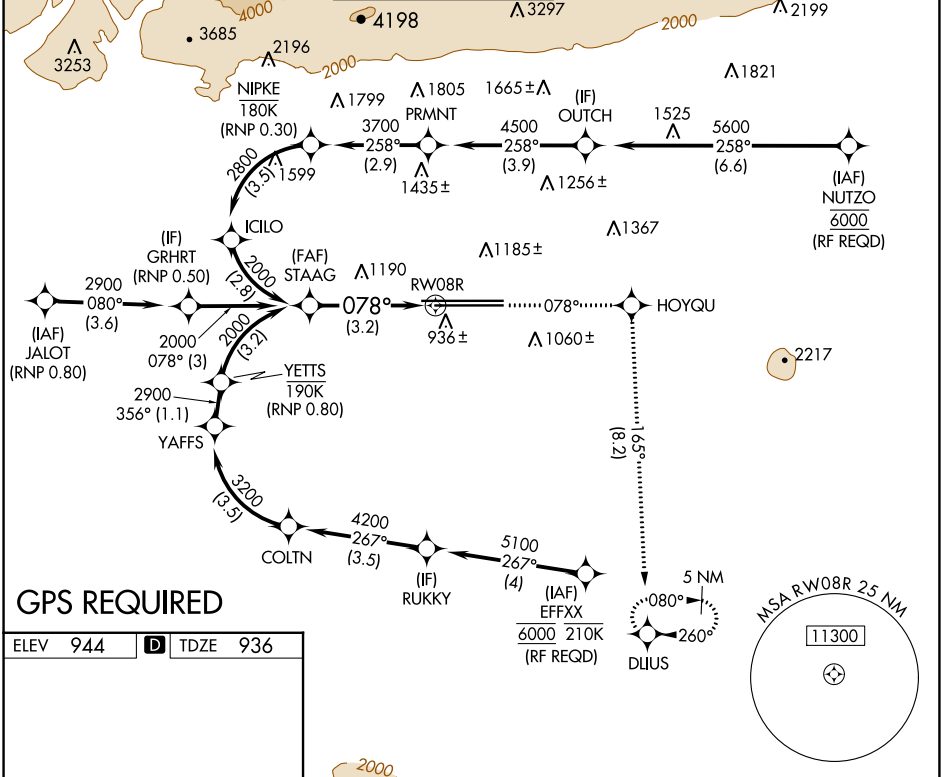
# RNAV (RNP) Z RWY 8R

ONTARIO INTL (ONT)

**▽** For uncompensated Baro-VNAV systems, procedure NA  
**△NA** below 2°C (36°F) or above 54°C (130°F).

MISSED APPROACH: Climb to 5300 on track 078° to HOYQU and on track 165° to DLIUS and hold, continue climb-in-hold to 5300.

D-ATIS <b>124.25</b>	SOCAL APP CON <b>127.0 318.2</b>	<b>ONTARIO TOWER</b> <b>120.6 360.775</b>	GND CON <b>121.9 257.8</b>	CLNC DEL <b>132.9</b>	CPDLC
-------------------------	-------------------------------------	--	-------------------------------	--------------------------	-------

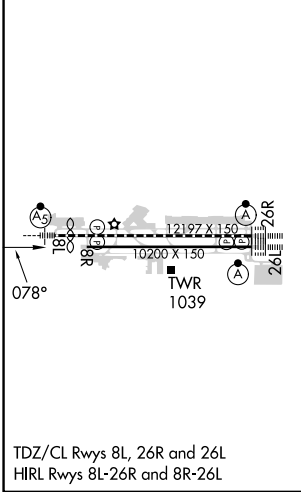


SW-3, 03 OCT 2024 to 31 OCT 2024

SW-3, 03 OCT 2024 to 31 OCT 2024

## GPS REQUIRED

ELEV	944	<b>D</b>	TDZE	936
------	-----	----------	------	-----



VGSi and RNAV glidepath not coincident (VGSi Angle 3.00/TCH 65).			
5300 ↑ tr 078°	HOYQU ✦	tr 165°	DLIUS ✦
See planview for multiple IF locations.			
2000	078°		RW08R
GP 3.00° TCH 60	3.2 NM		

CATEGORY	A	B	C	D
RNP 0.30 DA	1342-1½ 406 (400-1½)			

## AUTHORIZATION REQUIRED