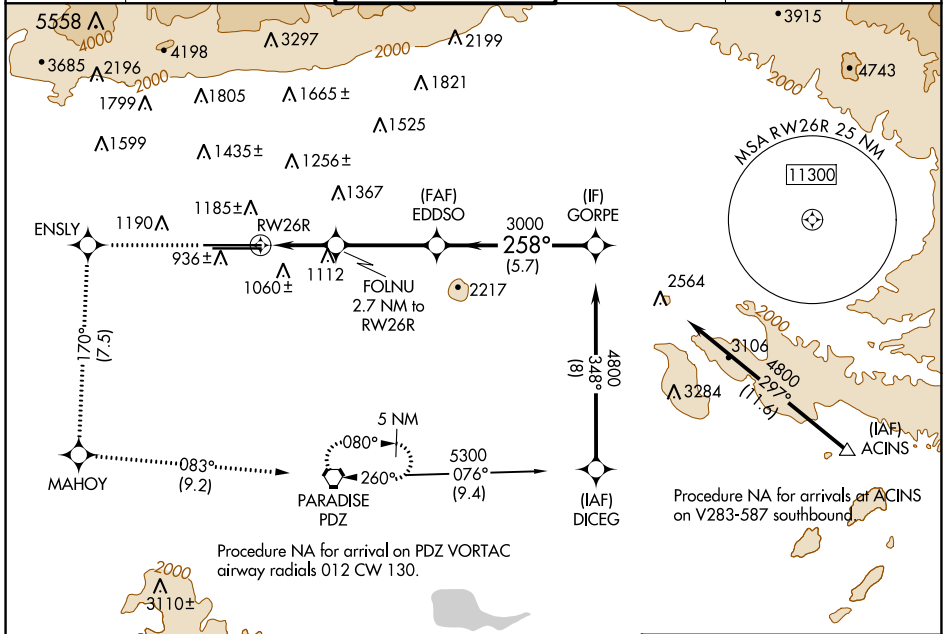


WAAS CH 53406 W26A	APP CRS 258°	Rwy Idg 12197 TDZE 932 Apt Elev 944
--	------------------------	--

RNAV (GPS) Y RWY 26R

ONTARIO INTL (ONT)

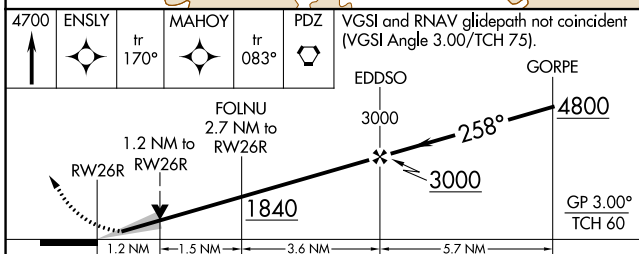
RNP APCH - GPS.		ALSIF-2	MISSED APPROACH: Climb to 4700 direct ENSLY and on track 170° to MAHOY and on track 083° to PDZ VORTAC and hold, continue climb-in-hold to 4700.					
▼ Circling NA north of Rwy 8L-26R. For uncompensated Baro-VNAV systems, procedure NA below 2°C or above 54°C.			D-ATIS 124.25	SOCAL APP CON 127.0 318.2	ONTARIO TOWER 120.6 360.775	GND CON 121.9 257.8	CLNC DEL 132.9	CPDLC



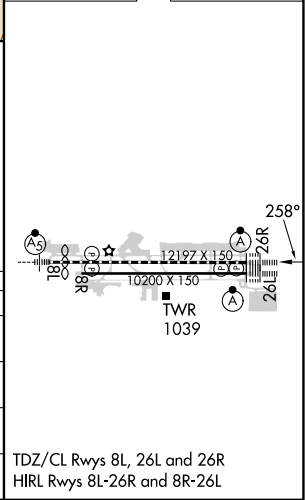
SW-3, 03 OCT 2024 to 31 OCT 2024

SW-3, 03 OCT 2024 to 31 OCT 2024

ELEV 944	D TDZE 932
----------	-------------------



CATEGORY	A	B	C	D
LPV DA		1132/18	200 (200-½)	
LNAV/VNAV DA		1267/55	335 (400-1)	
LNAV MDA	1380/24	448 (500-½)	1380/45	448 (500-¾)
C CIRCLING	1400-1	456 (500-1)	1500-1½ 556 (600-1½)	1540-2 596 (600-2)



TDZ/CL Rwys 8L, 26L and 26R
HIRL Rwys 8L-26R and 8R-26L