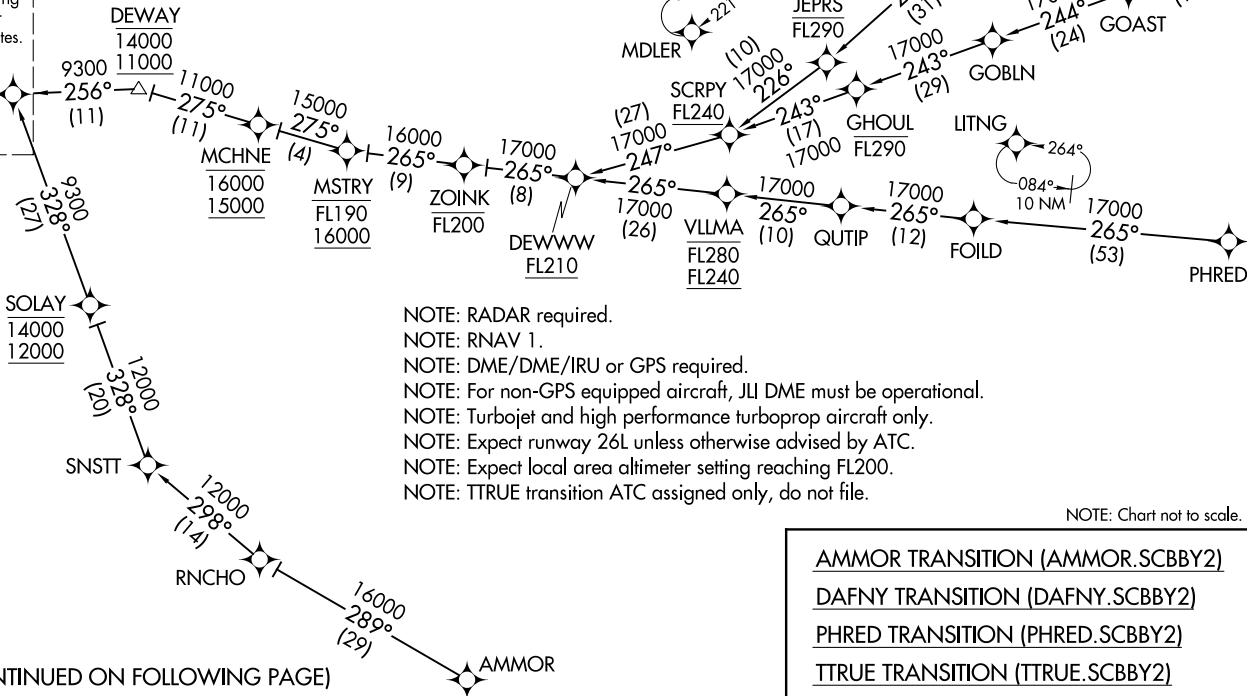


SOCAL APP CON  
134.0 278.3 (SE)  
126.7 370.95 (E)  
D-ATIS  
124.25  
ONTARIO TOWER  
120.6 360.775



See following page for Arrival Routes.

SCBBY  
11000  
9300



- NOTE: RADAR required.
- NOTE: RNAV 1.
- NOTE: DME/DME/IRU or GPS required.
- NOTE: For non-GPS equipped aircraft, JII DME must be operational.
- NOTE: Turbojet and high performance turboprop aircraft only.
- NOTE: Expect runway 26L unless otherwise advised by ATC.
- NOTE: Expect local area altimeter setting reaching FL200.
- NOTE: TTRUE transition ATC assigned only, do not file.

NOTE: Chart not to scale.

AMMOR TRANSITION (AMMOR.SCBBY2)  
DAFNY TRANSITION (DAFNY.SCBBY2)  
PHRED TRANSITION (PHRED.SCBBY2)  
TTRUE TRANSITION (TTRUE.SCBBY2)

(CONTINUED ON FOLLOWING PAGE)

SCBBY TWO ARRIVAL (RNAV) Transition Routes  
(SCBBY.SCBBY2) 01FEB18

ONTARIO, CALIFORNIA  
ONTARIO INTL (ONT)

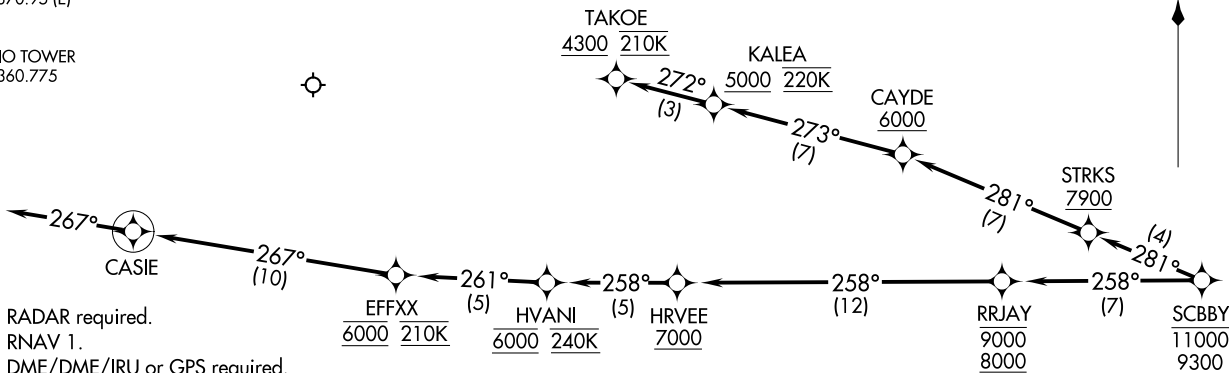
(SCBBY.SCBBY2) 18032

SCBBY TWO ARRIVAL (RNAV) Transition Routes  
AL-965 (FAA)

ONTARIO INTL (ONT)  
ONTARIO, CALIFORNIA

SCBBY TWO ARRIVAL (RNAV) Arrival Routes  
 (SCBBY:SCBBY2) 01FEB18

SOCAL APP CON  
 134.0 278.3 (SE)  
 126.7 370.95 (E)  
 D-ATIS  
 124.25  
 ONTARIO TOWER  
 120.6 360.775



NOTE: RADAR required.  
 NOTE: RNAV 1.  
 NOTE: DME/DME/IRU or GPS required.  
 NOTE: For non-GPS equipped aircraft, JLI DME must be operational.  
 NOTE: Turbojet and high performance turboprop aircraft only.  
 NOTE: Expect runway 26L unless otherwise advised by ATC.  
 NOTE: Expect local area altimeter setting reaching FL200.

NOTE: Chart not to scale.

ARRIVAL ROUTE DESCRIPTION

LANDING RUNWAYS 8L/R: From SCBBY on track 258° to cross RRJAY between 8000 and 9000, then on track 258° to cross HRVEE at or above 7000, then on track 258° to cross HVANI at 6000 and at 240K, then on track 261° to cross EFFXX at 6000 and at 210K, then on track 267° to CASIE, then on track 267°. Expect RNAV (RNP) Z RWY 8L approach or RADAR vectors to final approach course.

LANDING RUNWAYS 26L/R: From SCBBY on track 281° to cross STRKS at or above 7900, then on track 281° to cross CAYDE at or above 6000, then on track 273° to cross KALEA at or above 5000 and at 220K, then on track 272° to cross TAKOE at or above 4300 and at 210K. Expect assigned instrument approach or RADAR vectors to final approach course.

LOST COMMUNICATIONS

LANDING WEST: Proceed on the RNAV (RNP) Z RWY 26L approach or ILS or LOC RWY 26L approach.

LANDING EAST: Proceed on the RNAV (RNP) Z RWY 8L approach or ILS or LOC RWY 8L approach.

ONTARIO, CALIFORNIA  
 ONTARIO INTL (ONT)

(SCBBY:SCBBY2) 18032  
 SCBBY TWO ARRIVAL (RNAV) Arrival Routes

AL-965 (FAA)

ONTARIO INTL (ONT)  
 ONTARIO, CALIFORNIA