

(MKNLY4.TKA) 23278

MCKINLEY FOUR DEPARTURE

AL-1234 (FAA)

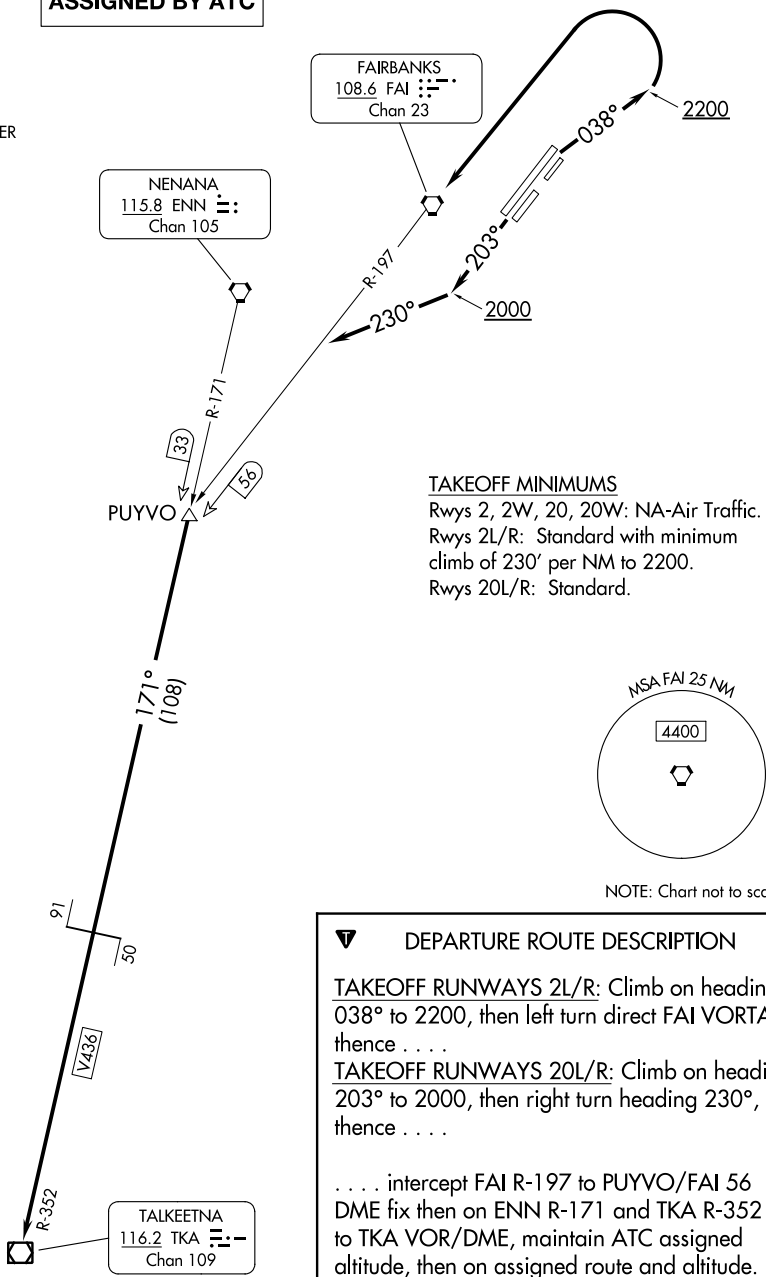
FAIRBANKS INTL (FAI) (PAFA)
FAIRBANKS, ALASKA

FAIRBANKS DEP CON
125.35 363.2
ATIS
124.4
CLNC DEL
127.6
GND CON
121.9
FAIRBANKS TOWER
118.3 257.8

**TOP ALTITUDE:
ASSIGNED BY ATC**

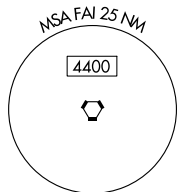
RADAR required. DME required.

AK, 05 SEP 2024 to 31 OCT 2024



TAKEOFF MINIMUMS

Rwys 2, 2W, 20, 20W: NA-Air Traffic.
Rwys 2L/R: Standard with minimum
climb of 230' per NM to 2200.
Rwys 20L/R: Standard.



NOTE: Chart not to scale.

DEPARTURE ROUTE DESCRIPTION

TAKEOFF RUNWAYS 2L/R: Climb on heading 038° to 2200, then left turn direct FAI VORTAC, thence

TAKEOFF RUNWAYS 20L/R: Climb on heading 203° to 2000, then right turn heading 230°, thence

. . . . intercept FAI R-197 to PUYVO/FAI 56 DME fix then on ENN R-171 and TKA R-352 to TKA VOR/DME, maintain ATC assigned altitude, then on assigned route and altitude.

AK, 05 SEP 2024 to 31 OCT 2024

MCKINLEY FOUR DEPARTURE

(MKNLY4.TKA) 10AUG23

FAIRBANKS, ALASKA
FAIRBANKS INTL (FAI) (PAFA)