

(RDFLG5.RDFLG) 23222

# RDFLG FIVE DEPARTURE (RNAV)

AL-1234 (FAA)

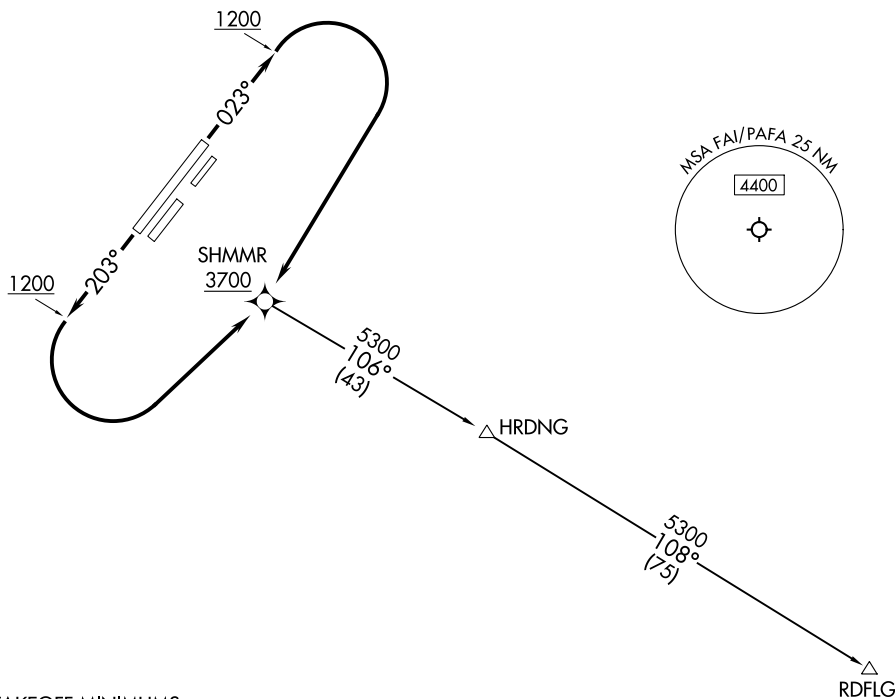
FAIRBANKS INTL (FAI) (PAFA)

FAIRBANKS, ALASKA

**TOP ALTITUDE:  
10000**

RNAV 1 - GPS.

FAIRBANKS DEP CON  
125.35 363.2  
ATIS 124.4  
CLNC DEL  
127.6  
GND CON  
121.9  
FAIRBANKS TOWER  
118.3 257.8



### TAKEOFF MINIMUMS

Rwys 2, 2R, 2W, 20, 20L, 20W: NA - Air Traffic.

Rwy 20R: Standard.

Rwy 2L: Standard with minimum climb of 230' per NM to 1500.

NOTE: Chart not to scale.



### DEPARTURE ROUTE DESCRIPTION

TAKEOFF RUNWAY 2L: Climb on heading 023° to 1200, then climbing right turn direct SHMMR, cross SHMMR at or above 3700, thence. . . .

TAKEOFF RUNWAY 20R: Climb on heading 203° to 1200, then climbing left turn direct SHMMR, cross SHMMR at or above 3700, thence. . . .

. . . .on RDLFG transition. Climb and maintain 10000. Expect 17000 ten minutes after departure.

RDFLG TRANSITION (RDFLG5.RDFLG)

# RDFLG FIVE DEPARTURE (RNAV)

(RDFLG5.RDFLG) 10AUG23

FAIRBANKS, ALASKA  
FAIRBANKS INTL (FAI) (PAFA)

AK, 05 SEP 2024 to 31 OCT 2024

AK, 05 SEP 2024 to 31 OCT 2024