

APP CRS	Rwy ldg	11050
203°	TDZE	439
	Apt Elev	439

RNAV (RNP) Z RWY 20R

FAIRBANKS INTL (FAI) (PAFA)

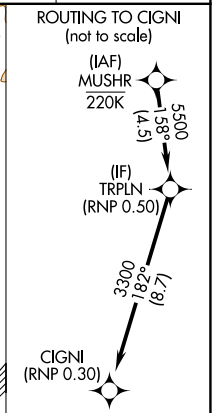
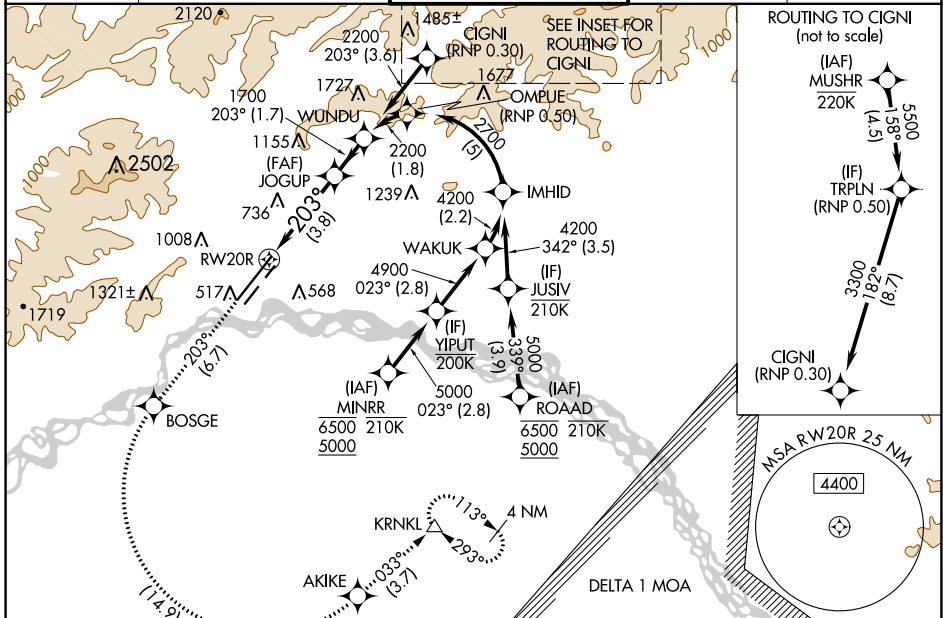
RNP AR APCH - GPS.

-29°C For uncompensated Baro-VNAV systems, procedure NA below -18°C or above 54°C. For inop ALS, increase RNP 0.30 all Cats visibility to 1 1/2 SM.

MALSR

MISSED APPROACH: Climb to 4000 on track 203° to BOSGE then left turn to AKIKE then on track 033° to KRNLK and hold.

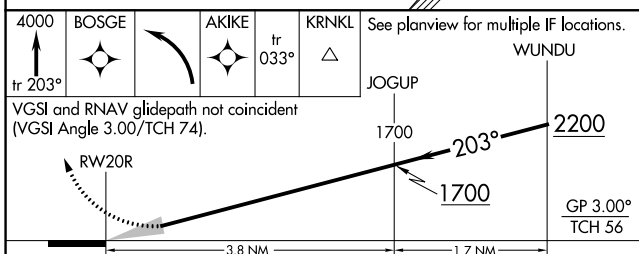
ATIS	FAIRBANKS APP CON	FAIRBANKS TOWER	GND CON	CLNC DEL
124.4	125.35 363.2	118.3 257.8	121.9	127.6



AK, 05 SEP 2024 to 31 OCT 2024

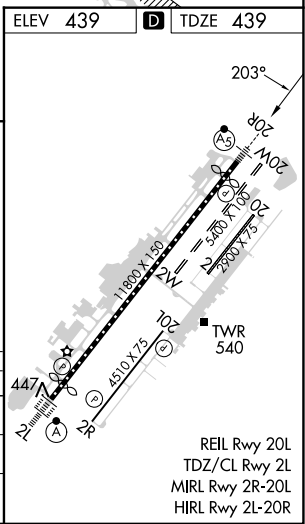
AK, 05 SEP 2024 to 31 OCT 2024

ELEV 439		TDZE 439
----------	--	----------



CATEGORY	A	B	C	D
RNP 0.10 DA		763/26	324 (400-1/2)	
RNP 0.30 DA		923/50	484 (500-1)	

AUTHORIZATION REQUIRED



REIL Rwy 20L
TDZ/CL Rwy 2L
MIRL Rwy 2R-20L
HIRL Rwy 2L-20R