

APP CRS	Rwy Idg	<b>11050</b>
<b>023°</b>	TDZE	<b>439</b>
	Apt Elev	<b>439</b>

# RNAV (RNP) Z RWY 2L

FAIRBANKS INTL (FAI) (PAFA)

RNP AR APCH - GPS.

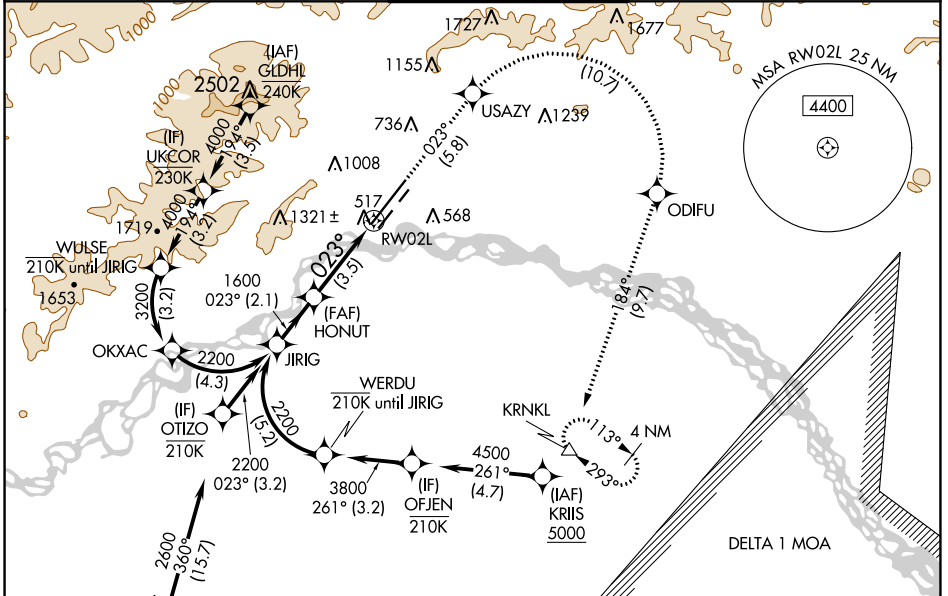
**⚠** For uncompensated Baro-VNAV systems, procedure NA below -19°C or above 54°C. For inop ALS, increase RNP 0.10\* all Cats visibility to RVR 4500, increase RNP 0.10 all Cats visibility to RVR 5500, and increase RNP 0.30 all Cats visibility to RVR 6000.

ALSf-2

**MISSED APPROACH:** Climb to 5000 on track 023° USAZY then right turn to ODIFU and track 184° to KRNL and hold.

\*Missed approach requires minimum climb of 222 feet per NM to 2420.

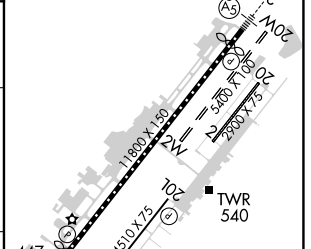
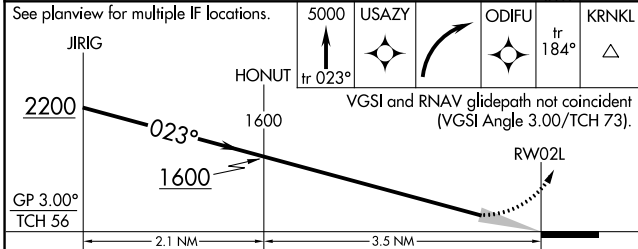
ATIS	FAIRBANKS APP CON	FAIRBANKS TOWER	GND CON	CLNC DEL
<b>124.4</b>	<b>125.35 363.2</b>	<b>118.3 257.8</b>	<b>121.9</b>	<b>127.6</b>



AK, 05 SEP 2024 to 31 OCT 2024

AK, 05 SEP 2024 to 31 OCT 2024

ELEV 439	<b>D</b> TDZE 439
----------	-------------------



CATEGORY	A	B	C	D
RNP 0.10 DA*		755/24	316 (400-½)	
RNP 0.10 DA		805/35	366 (400-¾)	
RNP 0.30 DA		855/40	416 (500-¾)	

**AUTHORIZATION REQUIRED**

REIL Rwy 20L  
TDZ/CL Rwy 2L  
MIRL Rwy 2R-20L  
HIRL Rwy 2L-20R