

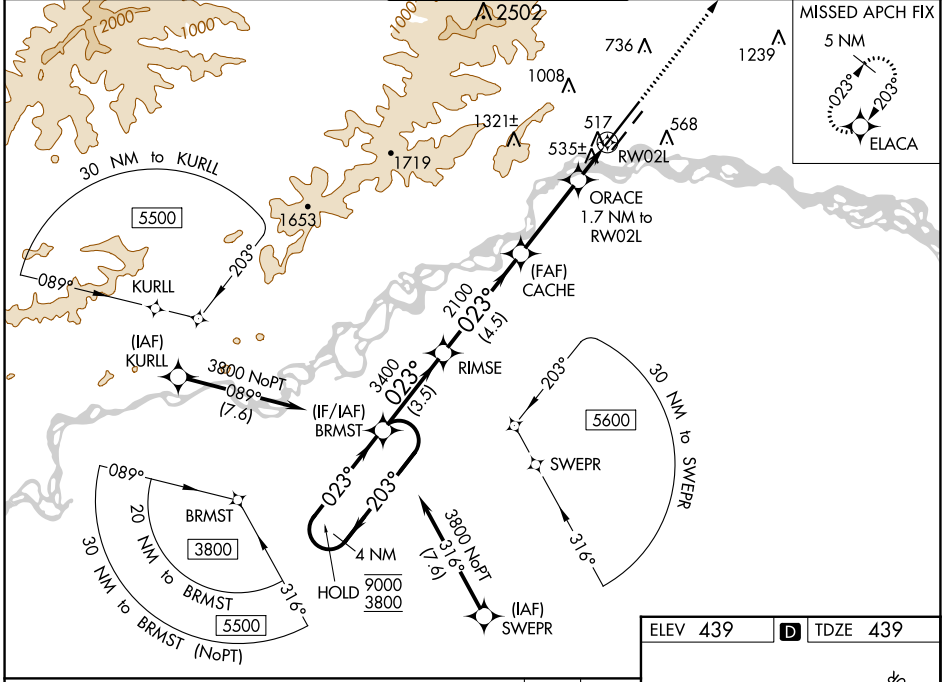
WAAS CH 57915 W02B	APP CRS 023°	Rwy Idg 11050 TDZE 439 Apt Elev 439
--	------------------------	--

RNAV (GPS) Y RWY 2L

FAIRBANKS INTL (FAI) (PAFA)

RNP APCH - GPS. Circling NA west of Rwy 2L-20R. Circling NA to Rwy 2W and 20W. -29°C For uncompensated Baro-VNAV systems, LNAV/VNAV NA below -19°C or above 54°C. For inop ALS, increase LNAV/VNAV all Cats visibility to RVR 4500 and LNAV Cat C/D visibility to RVR 5500.	ALSIF-2 	MISSED APPROACH: Climb to 4900 direct ELACA and hold, continue climb-in hold to 4900.
--	-------------	---

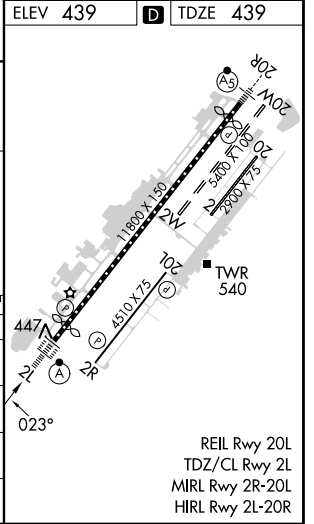
ATIS 124.4	FAIRBANKS APP CON 125.35 363.2	FAIRBANKS TOWER 118.3 257.8	GND CON 121.9	CLNC DEL 127.6
----------------------	--	---------------------------------------	-------------------------	--------------------------



AK, 05 SEP 2024 to 31 OCT 2024

AK, 05 SEP 2024 to 31 OCT 2024

4 NM Holding Pattern	BRMST	RIMSE	CACHE	ORACE	ELACA
9000 ← 203°	3800 → 023°	3400 → 023°	2100	1.7 NM to RW02L	4900
GP 3.00°				0.9 NM to RW02L	
TCH 56				0.8	
	3.5 NM	4.5 NM	3.4 NM	0.8	0.9



CATEGORY	A	B	C	D
LPV DA		639/18	200 (200-½)	
LNAV/VNAV DA		720/24	281 (300-½)	
LNAV MDA	800/24	361 (400-½)	800/40	361 (400-¾)
CIRCLING	880-1 441 (500-1)	900-1 461 (500-1)	900-1½ 461 (500-1½)	1020-2 581 (600-2)