

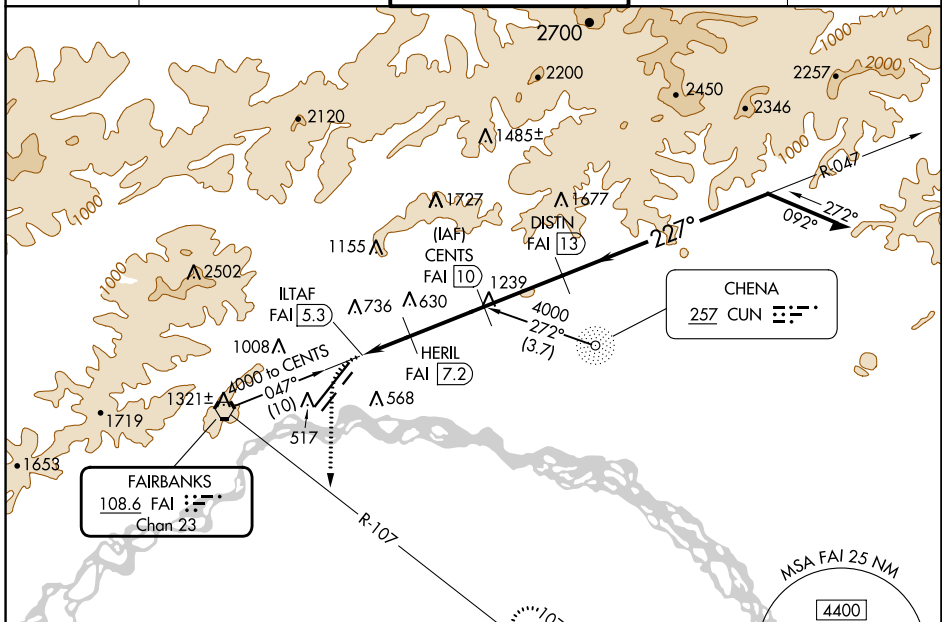
VORTAC FAI 108.6 Chan 23	APP CRS 227°	Rwy Idg 11050 TDZE 439 Apt Elev 439
---------------------------------------	------------------------	--

TACAN RWY 20R

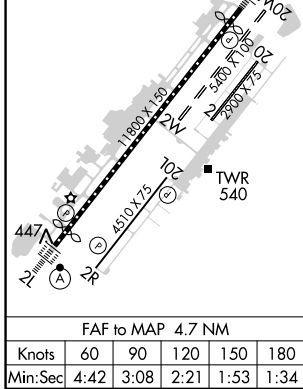
FAIRBANKS INTL (FAI) (PAFA)

	Circling NA to Rwy 2W and 20W. Circling NA west of Rwy 2L-20R. Rwy 20R helicopter visibility reduction below RVR 4000 NA. Inop table does not apply.	MALSR 	MISSED APPROACH: Climbing left turn to 4000 on heading 160° and FAI VORTAC R-107 to KRNL/FAI 13 DME and hold, continue climb-in-hold to 4000.	
				ATIS 124.4

ATIS 124.4	FAIRBANKS APP CON 125.35 363.2	FAIRBANKS TOWER 118.3 257.8	GND CON 121.9	CLNC DEL 127.6
----------------------	--	---------------------------------------	-------------------------	--------------------------



ELEV 439	D	TDZE 439
REIL Rwy 20L		
TDZ/CL Rwy 2L		
MIRL Rwy 2R-20L		
HIRL Rwy 2L-20R		



EMERGENCY SAFE ALTITUDE 100 NM 16000

4000	FAI R-107	KRNL	CENTS FAI 10	VGSI and descent angles not coincident (VGSI Angle 3.00/TCH 74)	
hdg 160°				Remain within 15 NM	
	HERIL FAI 7.2		DISTN FAI 13	047°	
	ILTAF FAI 5.3			227°	
				4000	
				3300	
				2200	
				1300	
				3.00° TCH 60	
				0.7	
				1.8 NM	
				2.8 NM	
				3 NM	
CATEGORY	A	B	C	D	E
S-20R	880/55	441 (500-1)	880-1 3/8	441 (500-1 3/8)	1000-1 5/8
					561 (600-1 5/8)
C CIRCLING	880-1	900-1	900-1 1/2	1020-2	1120-2 1/2
	441 (500-1)	461 (500-1)	461 (500-1 1/2)	581 (600-2)	681 (700-2 1/2)

FAIRBANKS, ALASKA
Orig 15JUN23

64°49'N-147°51'W

FAIRBANKS INTL (FAI) (PAFA)
TACAN RWY 20R

AK, 05 SEP 2024 to 31 OCT 2024

AK, 05 SEP 2024 to 31 OCT 2024