

LEXINGTON, OKLAHOMA

# COPTER RNAV (GPS) RWY 17

APCH CRS	Rwy Idg	2005
175°	TDZE	1091
	Arpt Elev	1091

[USA]

MULDROW AHP (KHMY)

RNP APCH - GFS

▼ Obtain local altimeter setting on CTAF; when not received, use University of Oklahoma Westheimer altimeter setting minimums.  
 ▲ NA

MISSED APPROACH: Climbing left turn to 3000 direct IMIME and hold.

OKE CITY APP CON  
**124.2 336.4**

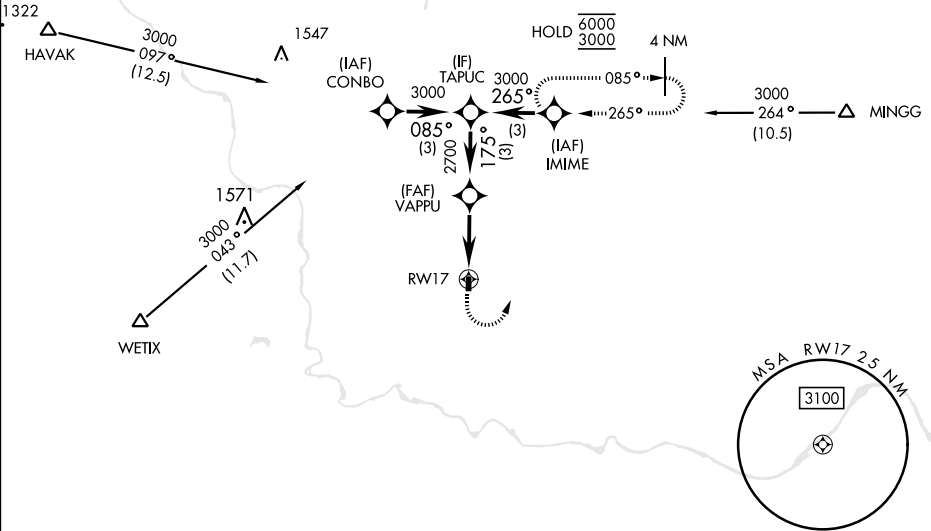
MULDROW OPS (Advisory service only)  
**46.9 139.425 227.2 (CTAF)**

Limit all segments airspeed to 90 KIAS.

Procedure not authorized at night.

Trees 1134' MSL, 364' from threshold.

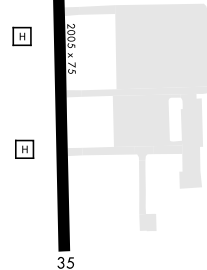
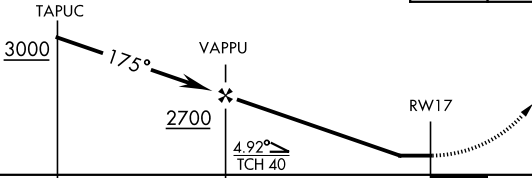
Visual segment - Obstacles.



SC-1, 03 OCT 2024 to 31 OCT 2024

SC-1, 03 OCT 2024 to 31 OCT 2024

3000	IMIME	ELEV	1091	TDZE	1091
------	-------	------	------	------	------



CATEGORY	COPTER	
LNAV MDA	1660-1	569 (600-1)
UNIVERSITY OF OKLAHOMA WESTHEIMER ALTIMETER SETTING MINIMUMS		
LNAV MDA	1720-1	629 (700-1)

LURL Rwy 17-35

LEXINGTON, OKLAHOMA

35°02'N-97°14'W

MULDROW AHP (KHMY)

Amdt 1 05SEP24

# COPTER RNAV (GPS) RWY 17