

COPTER RNAV (GPS) RWY 35

APCH CRS	Rwy Idg	2005
355°	TDZE	1091
	Arprt Elev	1091

[USA]

MULDROW AHP (KHMY)

RNP APCH - GFS

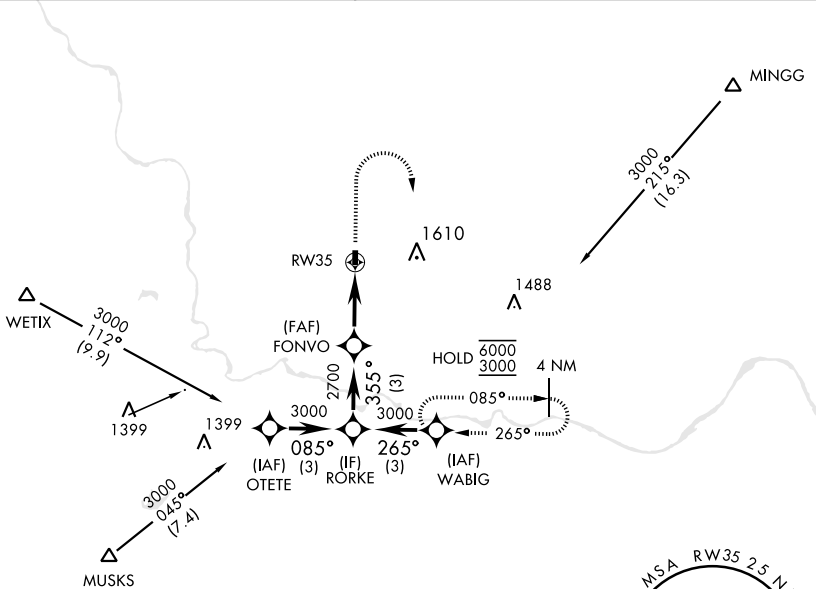
▼ Obtain local altimeter setting on CTAF; when not received, use University of Oklahoma Westheimer altimeter setting minimums.
 ▲ NA

MISSED APPROACH: Climb to 1600, then climbing right turn to 3000 direct WABIG and hold.

OKC CITY APP CON
124.2 336.4

MULDROW OPS (Advisory service only)
46.9 139.425 227.2 (CTAF)

1329

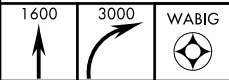


Limit all segments airspeed to 90 KIAS.

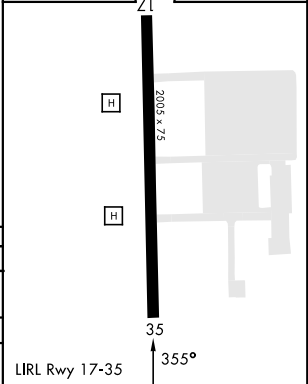
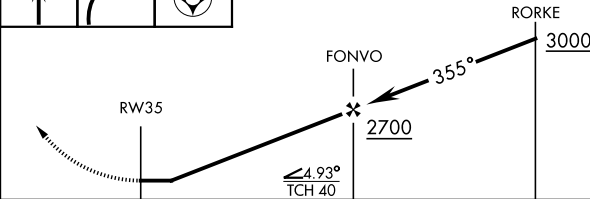
Procedure not authorized at night.

Trees 1141' MSL, 537' from threshold.

Visual segment - Obstacles.



ELEV	1091	TDZE	1091
------	------	------	------



CATEGORY	COPTER		
RNAV MDA	1580-1	489	(500-1)
UNIVERSITY OF OKLAHOMA WESTHEIMER ALTIMETER SETTING MINIMUMS			
RNAV MDA	1640-1	549	(600-1)

COPTER RNAV (GPS) RWY 35

SC-1, 03 OCT 2024 to 31 OCT 2024

SC-1, 03 OCT 2024 to 31 OCT 2024