

WAAS CH <b>45718</b> <b>W03A</b>	APP CRS <b>031°</b>	Rwy Idg TDZE Apt Elev	<b>8800</b> <b>7014</b> <b>7014</b>
--	------------------------	-----------------------------	---

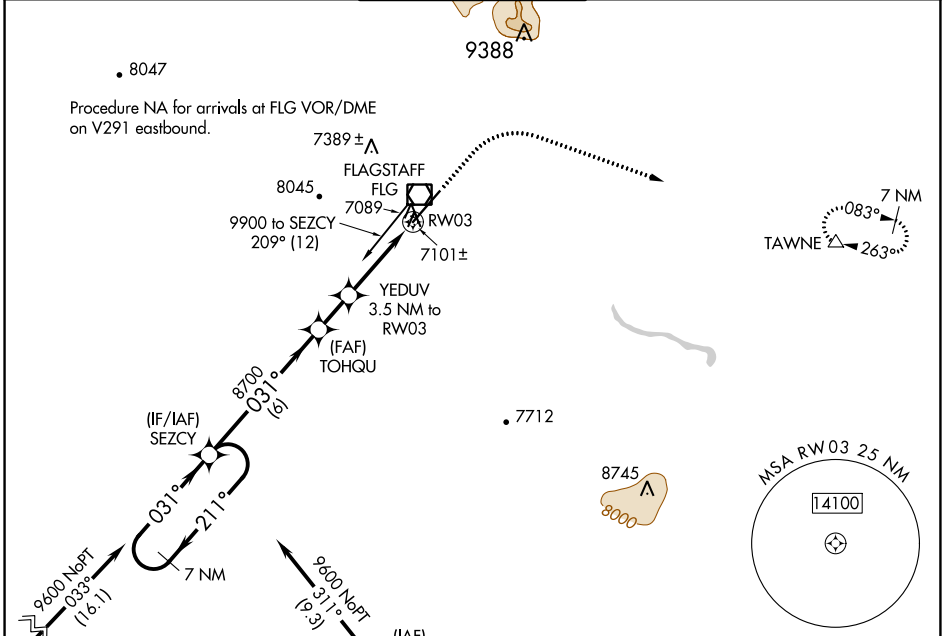
# RNAV (GPS) RWY 3

FLAGSTAFF PULLIAM (FLG)

**⚠** For uncompensated Baro-VNAV systems, LNAV/VNAV NA below -19°C (-2°F) or above 44°C (112°F).  
**⚠** DME/DME RNP-0.3 NA.

MISSED APPROACH: Climb to 7500 then climbing right turn to 9500 direct TAWNNE and hold.

ATIS <b>125.8</b>	PHOENIX APP CON <b>126.375 236.775</b>	FLAGSTAFF TOWER ★ <b>134.55 (CTAF) 0 239.25</b>	GND CON <b>121.9</b>	UNICOM <b>122.95</b>
----------------------	---	--	-------------------------	-------------------------



SW-4, 03 OCT 2024 to 31 OCT 2024

SW-4, 03 OCT 2024 to 31 OCT 2024

ELEV 7014		D TDZE 7014	
7 NM Holding Pattern SEZCY		7500 9500 TAWNNE	
GP 3.00° TCH 50		*LNAV only	
6 NM		*0.9 NM to RW03	
1.6 NM		RW03	
2.6 NM		8800 x 150	
0.9 NM		HIRL Rwy 3-21	
CATEGORY	A	B	C
LPV DA		7264-3/4	250 (300-3/4)
LNAV/VNAV DA		7282-7/8	268 (300-7/8)
LNAV MDA		7360-1	346 (400-1)
CIRCLING	7520-1 506 (600-1)	7560-1 546 (600-1)	8100-3 1086 (1100-3)
			8560-3 1546 (1600-3)