

WAAS CH <b>90319</b> <b>W18A</b>	APP CRS <b>184°</b>	Rwy Idg TDZE Apt Elev	<b>6557</b> <b>80</b> <b>90</b>
--	------------------------	-----------------------------	---------------------------------------

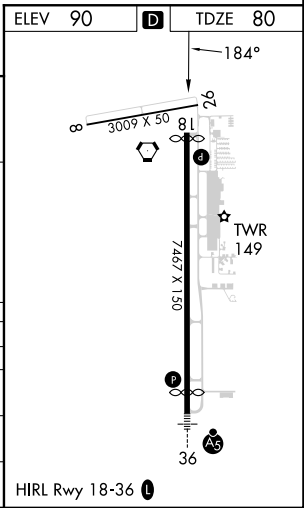
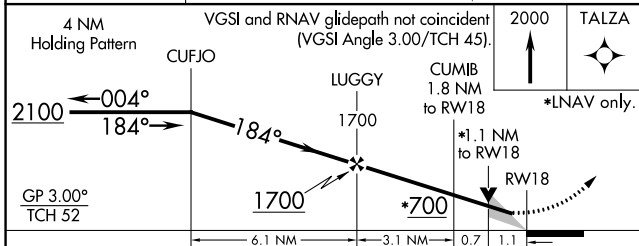
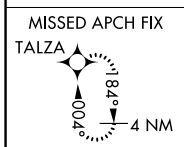
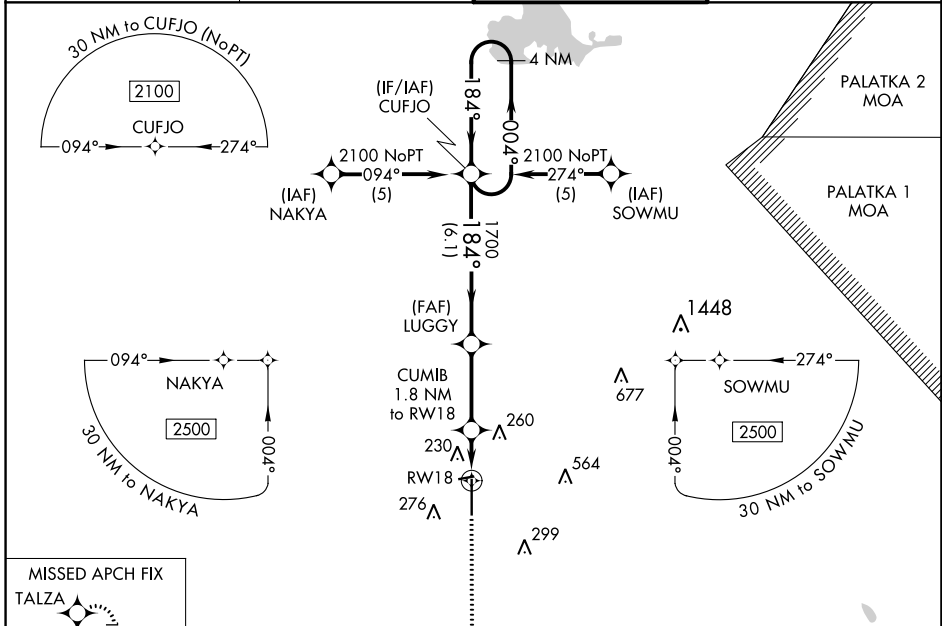
# RNAV (GPS) RWY 18

OCALA INTL-JIM TAYLOR FLD (OCF)

**⚠** For uncompensated Baro-VNAV systems, LNAV/VNAV NA below -15°C (5°F) or above 48°C (118°F). DME/DME RNP-0.3 NA. When local altimeter setting not received, use Gainesville altimeter setting and increase LPV DA to 361 feet, increase LNAV/VNAV DA to 595 feet and all MDA 100 feet; increase LPV and LNAV/VNAV all Cats and LNAV Cats C/D visibility ¼ SM; increase Circling Cat C visibility ½ SM, Cat D ¼ SM. Baro-VNAV and VDP NA when using Gainesville altimeter setting.

**MISSED APPROACH:**  
Climb to 2000 direct TALZA and hold.

ATIS <b>128.125</b>	JACKSONVILLE APP CON <b>118.6 251.15</b>	OCALA TOWER ★ <b>119.25 (CTAF) 0</b>	GND CON <b>121.4</b>
------------------------	---	---	-------------------------



CATEGORY	A	B	C	D
LPV DA		280-¾	200 (200-¾)	
LNAV/VNAV DA		514-1½	434 (500-1½)	
LNAV MDA	480-1	400 (400-1)		480-1¼ 400 (400-1¼)
CIRCLING	600-1	510 (600-1)	760-1¾ 670 (700-1¾)	920-2¾ 830 (900-2¾)

SE-3, 03 OCT 2024 to 31 OCT 2024

SE-3, 03 OCT 2024 to 31 OCT 2024