

NW-1, 03 OCT 2024 to 31 OCT 2024

DEPARTURE ROUTE DESCRIPTION

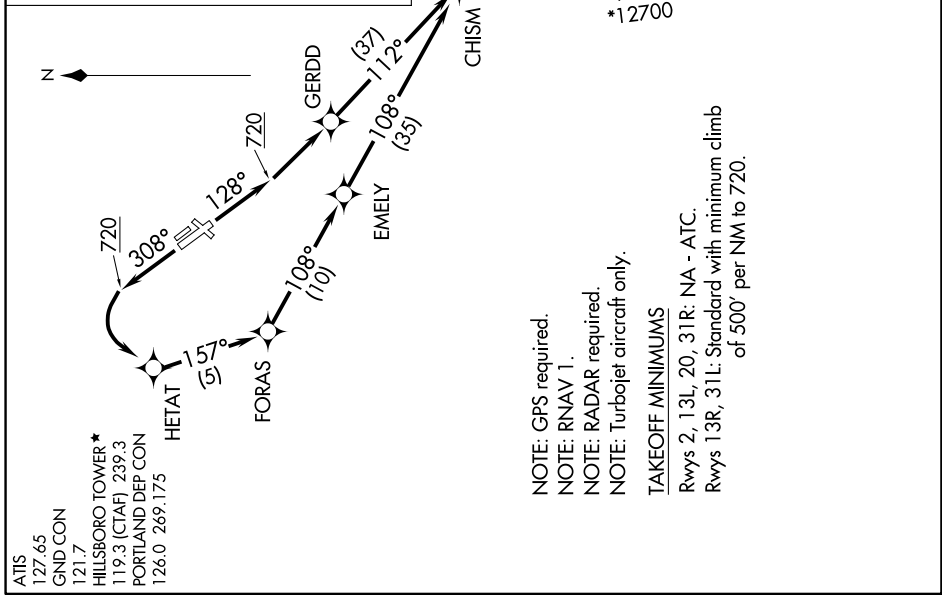
TAKEOFF RUNWAY 13R: Climb heading 128° to 720, then climbing left turn direct GERDD, then on depicted route to CHISM, thence

TAKEOFF RUNWAY 31L: Climb heading 308° to 720, then climbing left turn direct HETAT, then on depicted route to CHISM, thence

. . . . on (Transition). Maintain assigned altitude. Expect filed altitude 10 minutes after departure.

DESCHUTES TRANSITION [CHISM4.DSD]
JOGEN TRANSITION [CHISM4.JOGEN]
KIMBERLY TRANSITION [CHISM4.IMB]
PAWLI TRANSITION [CHISM4.PAWLI]
RIELY TRANSITION [CHISM4.RIELY]
SMIGE TRANSITION [CHISM4.SMIGE]

**TOP ALTITUDE:
ASSIGNED BY ATC**



ATIS 127.65
 GND CON 121.7
 HILLSBORO TOWER * 119.3 (CTAF) 239.3
 PORTLAND DEP CON 126.0 269.175

NOTE: GPS required.
 NOTE: RNAV 1.
 NOTE: RADAR required.
 NOTE: Turbojet aircraft only.

TAKEOFF MINIMUMS
 Rwy 2, 13L, 20, 31R: NA - ATC.
 Rwy 13R, 31L: Standard with minimum climb of 500' per NM to 720.

NOTE: Chart not to scale.

NW-1, 03 OCT 2024 to 31 OCT 2024