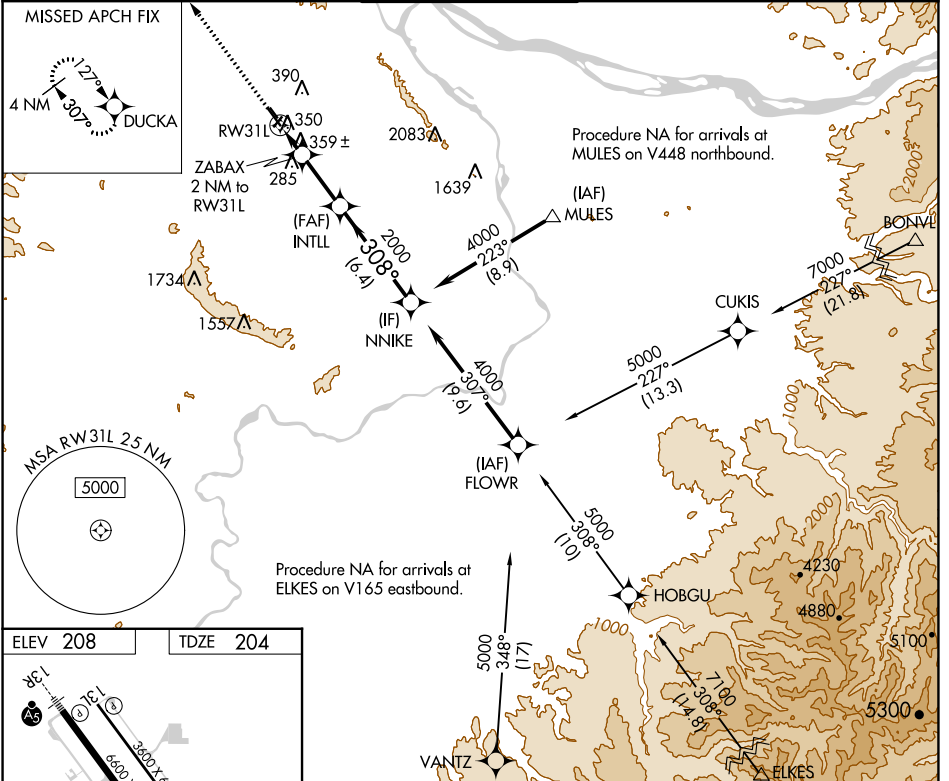


APP CRS	Rwy Idg	6600
308°	TDZE	204
	Apt Elev	208

RNAV (GPS) RWY 31L

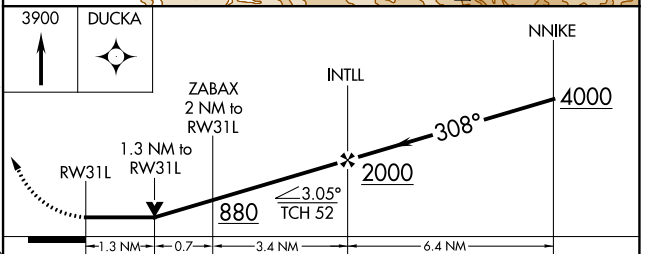
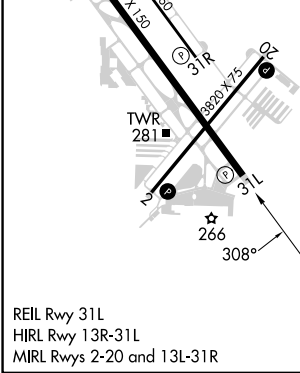
PORTLAND-HILLSBORO (HIO)

RNP APCH.		MISSED APPROACH: Climb to 3900 direct DUCKA and hold.		
<p>▽ Circling to Rwy 13L, 31R NA at night. Rwy 31L helicopter visibility reduction below $\frac{3}{4}$ SM NA.</p>				
ATIS	PORTLAND APP CON	HILLSBORO TOWER ★	GND CON	UNICOM
127.65	126.0 269.175	119.3 (CTAF) 239.3	121.7	122.95



NW-1, 03 OCT 2024 to 31 OCT 2024

NW-1, 03 OCT 2024 to 31 OCT 2024



CATEGORY	A	B	C	D
LNAV MDA	660-1	456 (500-1)	660-1 $\frac{3}{8}$	456 (500-1 $\frac{1}{2}$)
C CIRCLING	680-1 472 (500-1)	720-1 512 (600-1)	720-1 $\frac{1}{2}$ 512 (600-1 $\frac{1}{2}$)	980-2 $\frac{1}{2}$ 772 (800-2 $\frac{1}{2}$)