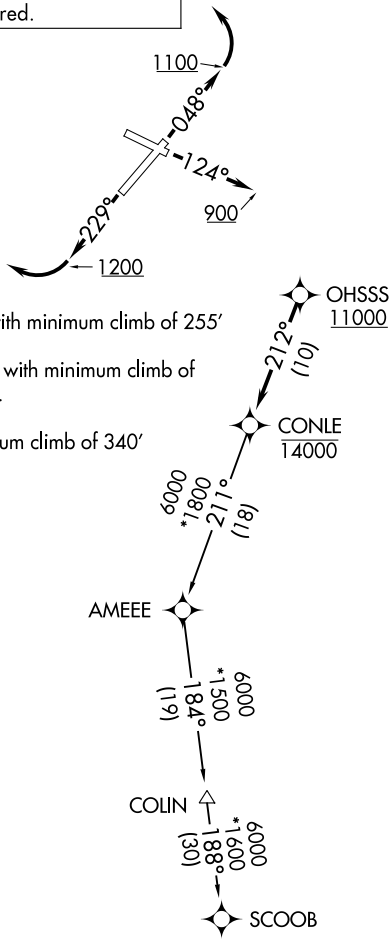


# CONLE FIVE DEPARTURE (RNAV)

POTOMAC DEP CON  
126.1 338.25  
ATIS  
124.875  
CLNC DEL  
127.425  
126.9 (when twr closed)  
GND CON  
127.425  
FREDERICK TOWER ★  
132.4 (CTAF)

RNAV 1-DME/DME/IRU or GPS.  
RADAR required.

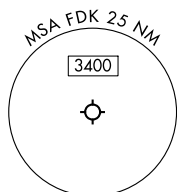
**TOP ALTITUDE:  
ASSIGNED BY ATC**



### TAKEOFF MINIMUMS:

- Rwy 5: 400-3 or standard with minimum climb of 255' per NM to 600.
- Rwy 12: 500-2¾ or standard with minimum climb of 410' per NM to 800.
- Rwy 23: Standard.
- Rwy 30: Standard with minimum climb of 340' per NM to 2400.

NOTE: Jet aircraft only.



NOTE: Chart not to scale.



### DEPARTURE ROUTE DESCRIPTION

- TAKEOFF RUNWAY 5: Climb on heading 048° to 1100 before turning left.
- TAKEOFF RUNWAY 12: Climb on heading 124° to 900 before proceeding westbound.
- TAKEOFF RUNWAY 23: Climb on heading 229° to 1200 before turning right.

Climb on assigned heading for RADAR vectors to cross OHSSS at or above 11000, then on track 212° to cross CONLE at or below 14000, then on assigned transition. Maintain ATC assigned altitude. Expect clearance to filed altitude within 10 minutes after departure.

- COLIN TRANSITION (CONLE5.COLIN)
- SCOOB TRANSITION (CONLE5.SCOOB)