

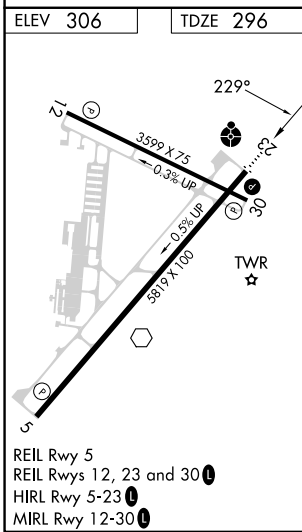
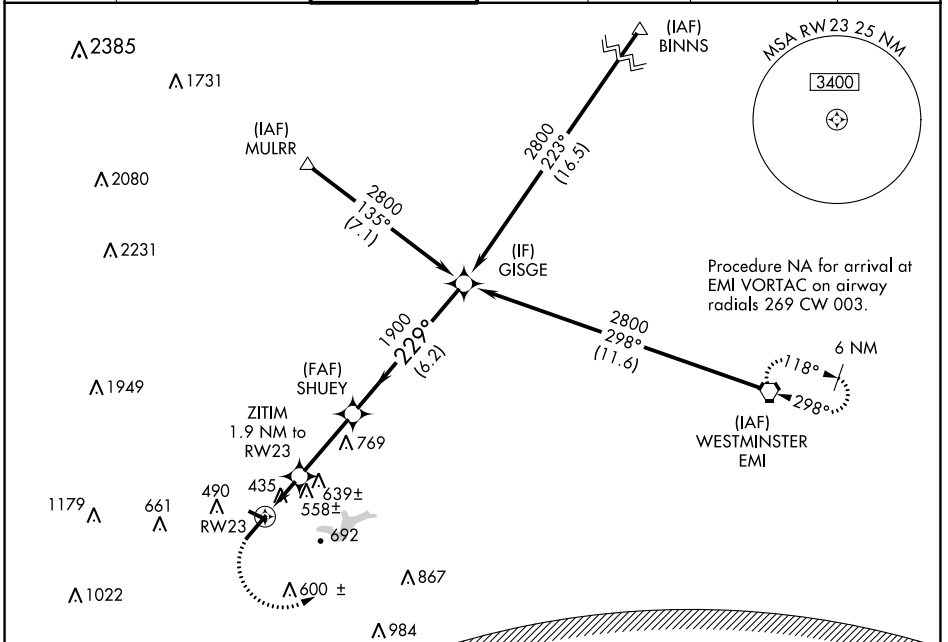
APP CRS	Rwy Idg	5819
229°	TDZE	296
	Apt Elev	306

RNAV (GPS) Y RWY 23

FREDERICK MUNI (FDK)

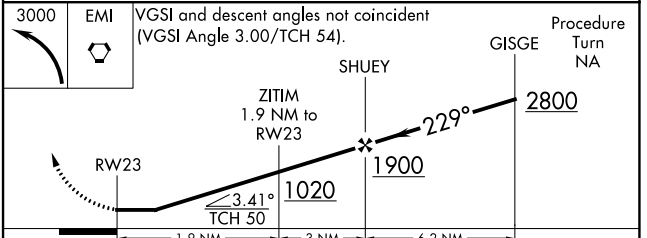
RNP APCH.	ODALS	MISSED APPROACH: Climbing left turn to 3000 direct EMI VORTAC and hold.
<p>▼ Inop table does not apply to Cat C. Rwy 23 helicopter visibility reduction below ¾ SM NA. Circling Rwy 30 NA at night.</p> <p>▲</p>		

ATIS 124.875	POTOMAC APP CON 126.1 338.25	FREDERICK TOWER ★ 132.4 (CTAF) 0	GND CON 127.425	CLNC DEL 127.425	CLNC DEL 126.9 (When twr closed)	UNICOM 122.95
------------------------	--	--	---------------------------	----------------------------	---	-------------------------



WASHINGTON DC METROPOLITAN SFRA

WARNING -- WASHINGTON DC SFRA. CTC POTOMAC APP CON



EMI	VGSi and descent angles not coincident (VGSi Angle 3.00/TCH 54).			Procedure Turn NA
	RWY 23	ZITIM 1.9 NM to RWY 23	SHUEY	GISGE
		1020	1900	2800
	1.9 NM	3 NM	6.2 NM	
CATEGORY	A	B	C	D
LNAV MDA	820-¾ 524 (600-¾)	820-1½ 524 (600-1½)	820-1½ 524 (600-1½)	820-1¾ 524 (600-1¾)
CIRCLING	920-1 614 (700-1)	1100-2¼ 794 (800-2¼)	1200-2¾ 894 (900-2¾)	

NE-3, 03 OCT 2024 to 31 OCT 2024

NE-3, 03 OCT 2024 to 31 OCT 2024