

APP CRS <b>345°</b>	Rwy Idg <b>3999</b>
	TDZE <b>667</b>
	Apt Elev <b>697</b>

# RNAV (GPS) RWY 34

VERMILION RGNL (DNTV)

RNP APCH - GPS.

**▼** Circling NA to Rwy 12 and 30.  
**▲** Rwy 34 helicopter visibility reduction below ¾ SM NA.

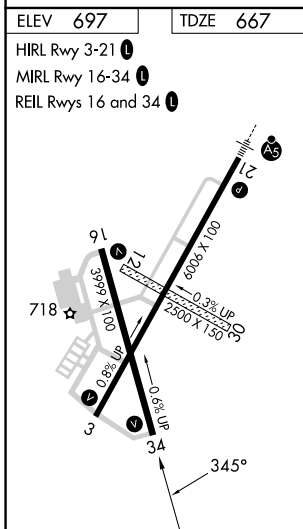
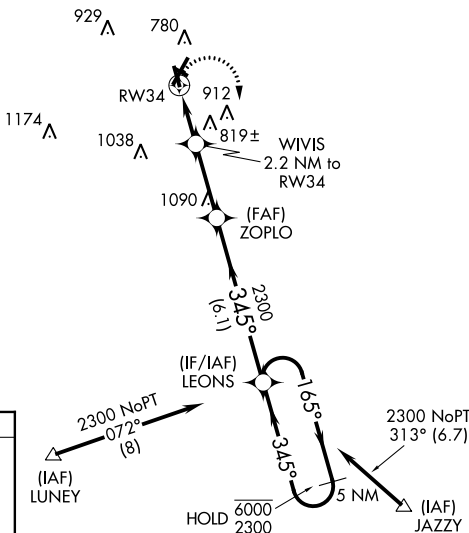
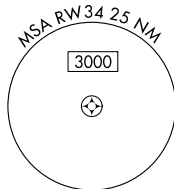
MISSED APPROACH: Climbing right turn to 2300 direct LEONS and hold.

AWOS-3  
**119.275**

CHAMPAIGN APP CON \*  
**121.35 285.65**

CLNC DEL  
**121.7**

UNICOM  
**122.7 (CTAF)**



2300	LEONS	VGSI and descent angles not coincident (VGSI Angle 3.00/TCH 14).	
		ZOPLO	LEONS
		5 NM Holding Pattern	
		WIVIS 2.2 NM to RW34	
		≤3.05° TCH 40	
		1400	2300
		2.2 NM	2.8 NM
		6.1 NM	
CATEGORY	A	B	C
LNAV MDA	1080-1	413 (400-1)	1080-1¼ 413 (400-1¼)
CIRCLING	1160-1	463 (500-1)	1240-1½ 543 (600-1½) 1340-2 643 (700-2)