


LOC I-ECC <b>110.1</b>	APP CRS <b>200°</b>	Rwy Idg TDZE Apt Elev	<b>8653</b> <b>5605</b> <b>5622</b>
---------------------------	------------------------	-----------------------------	---

# ILS or LOC RWY 20

CEDAR CITY RGNL (CDC)

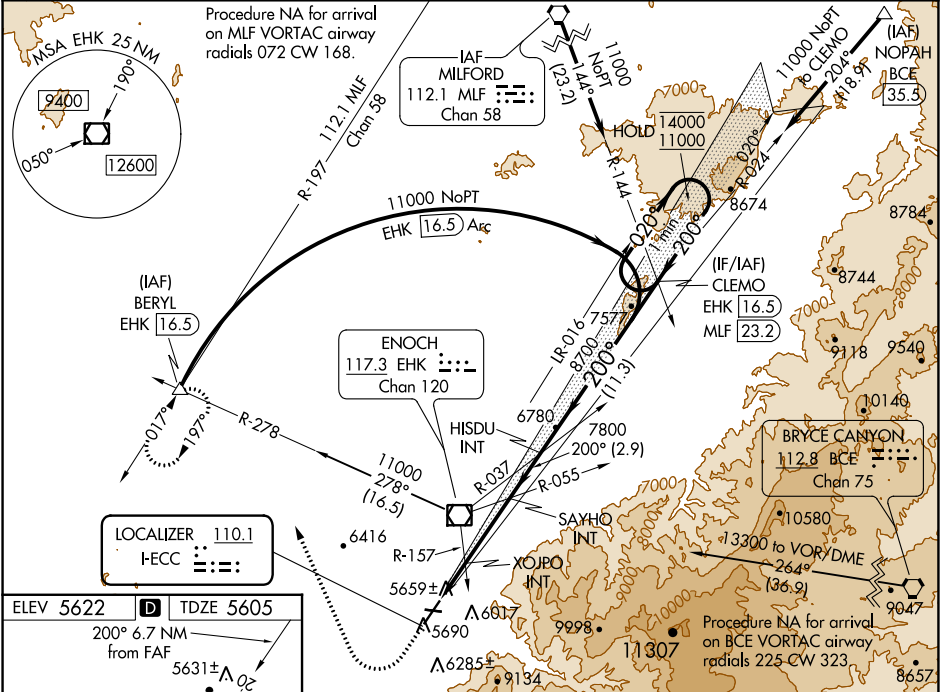
DME required.

**NA** XOJPO fix minimums (Dual VOR receivers required): For inop ALS, increase S-LOC 20 Cats C/D visibility to 1½ SM. For inop ALS, increase S-LOC 20 Cats C/D visibility to 2½ SM.  
#For inop ALS, increase S-ILS 20 visibility all Cats to 1 SM.

**MALSR** 

**MISSED APPROACH:** Climb to 6200 then climbing right turn to 10000 on heading 322° and on EHK R-278 to BERYL INT/EHK 16.5 DME and hold, continue climb-in-hold to 10000.  
† Missed approach requires minimum climb of 210 feet per NM to 7300.

ASOS <b>119.025</b>	SALT LAKE CITY CENTER <b>125.575 379.275</b>	UNICOM <b>123.0 (CTAF) 0</b>
------------------------	---	---------------------------------



ELEV 5622 TDZE 5605

200° 6.7 NM from FAF

5631±

4822 X 60 0.9% UP

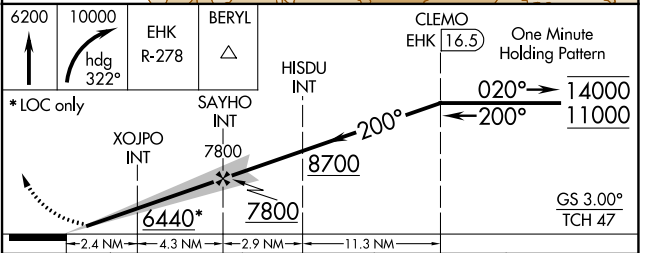
8653 X 150 0.4% UP

HIRL Rwy 2-20

MIRL Rwy 8-26

REIL Rws 2, 8 and 26

FAF to MAP 6.7 NM



CATEGORY	A	B	C	D
S-ILS 20†	5825-½ 220 (300-½)			
S-ILS 20#	5882-½ 277 (300-½)			
S-LOC 20	6440-½ 835 (900-½)	6440-¾ 835 (900-¾)	6440-1⅞ 835 (900-1⅞)	
XOJPO FIX MINIMUMS (DUAL VOR RECEIVERS REQUIRED)				
S-LOC 20	6100-½ 495 (500-½)	6100-1 495 (500-1)		

SW-4, 03 OCT 2024 to 31 OCT 2024

SW-4, 03 OCT 2024 to 31 OCT 2024