

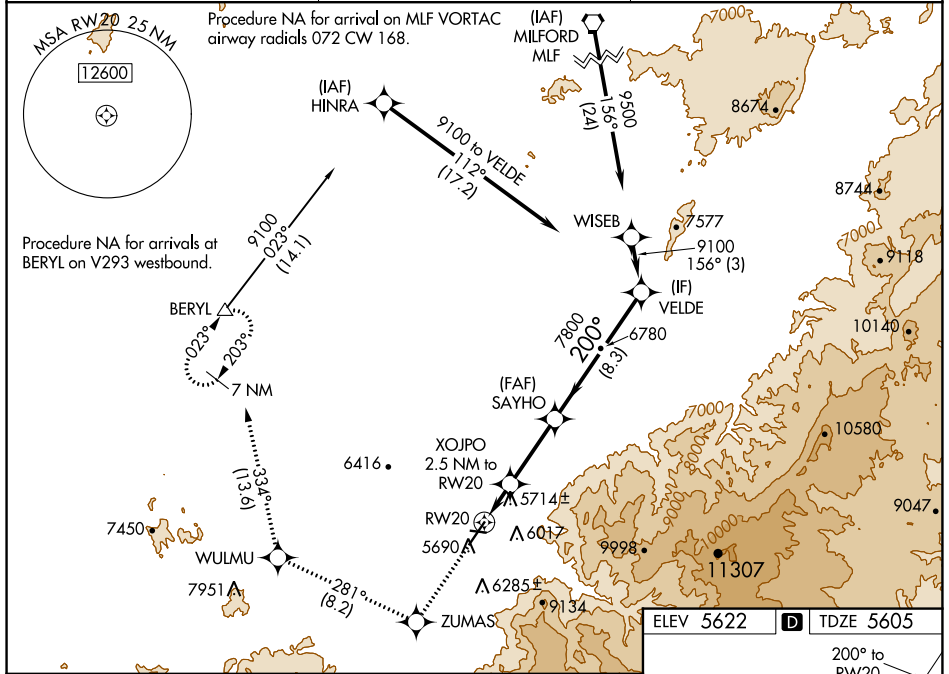
WAAS CH <b>72640</b> <b>W20A</b>	APP CRS <b>200°</b>	Rwy Idg TDZE Apt Elev	<b>8653</b> <b>5605</b> <b>5622</b>
--	------------------------	-----------------------------	---

# RNAV (GPS) RWY 20

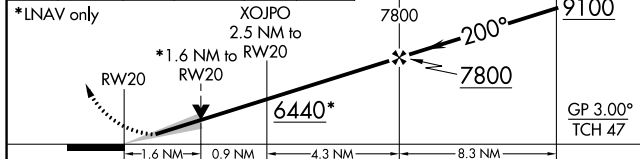
CEDAR CITY RGNL (CDC)

RNP APCH.	MALSR	MISSED APPROACH: Climb to 9800 direct ZUMAS and on track 281° to WULMU and on track 334° to BERYL and hold.
<p>Circling NA east of Rwy 2-20. Baro-VNAV NA. For inop ALS, increase LNAV/VNAV all Cats visibility to 1½ SM and LNAV Cats C/D visibility to 1½ SM.</p>		

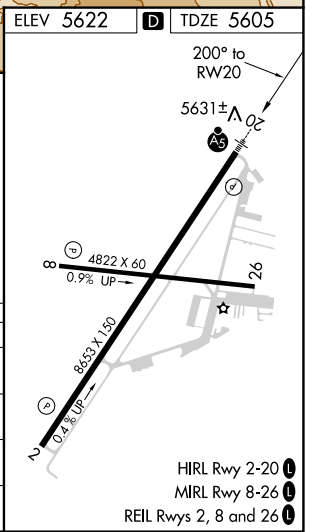
ASOS <b>119.025</b>	SALT LAKE CITY CENTER <b>125.575 379.275</b>	UNICOM <b>123.0 (CTAF)</b>
------------------------	---	-------------------------------



9800	ZUMAS	WULMU	BERYL	SAYHO	VELDE
↑	✧	✧	△		
	tr 281°	tr 334°			



CATEGORY	A	B	C	D
LPV DA		5825-½	220 (300-½)	
LNAV/VNAV DA		6015-¾	410 (400-¾)	
LNAV MDA	6180-½	575 (600-½)	6180-¼	575 (600-¼)
CIRCLING	6180-1	558 (600-1)	6180-1½	6180-2
			558 (600-1½)	558 (600-2)



SW-4, 03 OCT 2024 to 31 OCT 2024

SW-4, 03 OCT 2024 to 31 OCT 2024

HIRL Rwy 2-20  
MIRL Rwy 8-26  
REIL Rws 2, 8 and 26