


WAAS CH 40113 W08B	APP CRS 087°	Rwy Idg 10001 TDZE 794 Apt Elev 794
----------------------------------------	------------------------	----------------------------------------------------------------

RNAV (GPS) RWY 8R

GERALD R FORD INTL (G.R.R.)

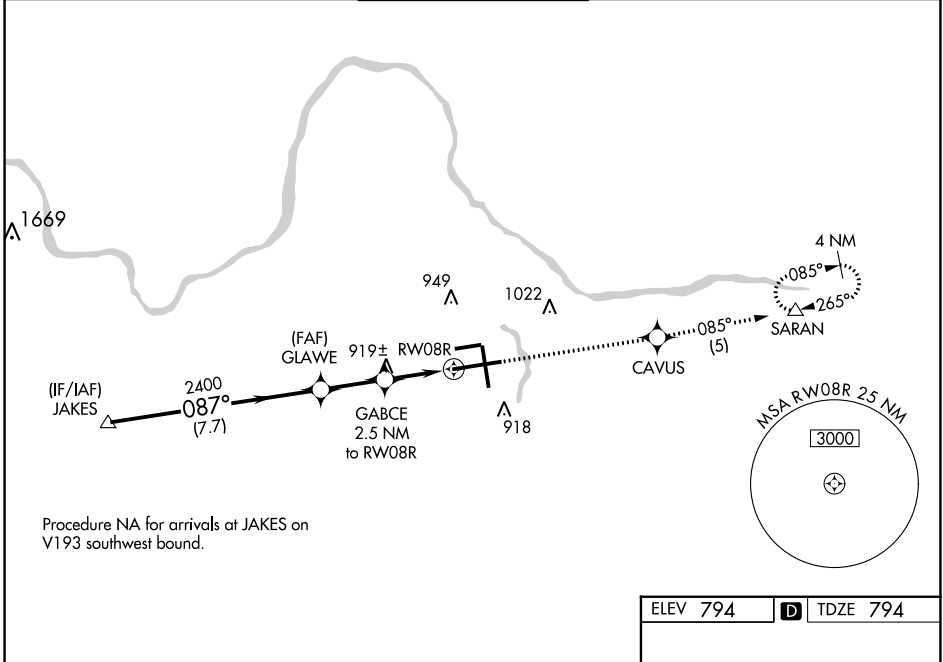
RNP APCH.

▼ For uncompensated Baro-VNAV systems, LNAV/VNAV NA below -16°C or above 47°C. For inop ALS, increase LNAV Cat D visibility to RVR 6000.
 ** RVR 1800 authorized with use of FD or AP or HUD to DA.

MALSR 

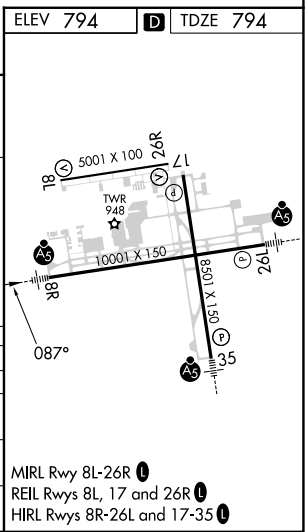
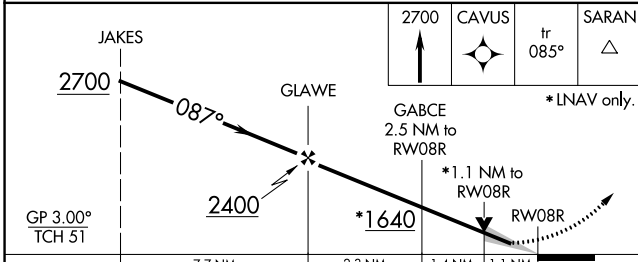
MISSED APPROACH:
Climb to 2700 direct CAVUS and on track 085° to SARAN and hold.

ATIS 118.725	GREAT LAKES APP CON * 128.4 257.6	GRAND RAPIDS TOWER * 135.65 (CTAF) 339.8	GND CON 121.8	CLNC DEL 119.3	UNICOM 122.95
------------------------	---------------------------------------------	----------------------------------------------------	-------------------------	--------------------------	-------------------------



EC-1, 03 OCT 2024 to 31 OCT 2024

EC-1, 03 OCT 2024 to 31 OCT 2024



GP 3.00° TCH 51	7.7 NM	2.3 NM	1.4 NM	1.1 NM
2700	2400	*1640		
JAKES	GLAWE	GABCE 2.5 NM to RW08R		RW08R
		*1.1 NM to RW08R		
2700	CAVUS	SARAN	*NAV only.	
		tr 085°		
CATEGORY	A	B	C	D
LPV DA **	994/24		200 (200-½)	
LNAV/VNAV DA	1297/50		503 (600-1)	
LNAV MDA	1180/24	386 (400-½)	1180/35 386 (400-¾)	1180/50 386 (400-1)
C CIRCLING	1260-1	466 (500-1)	1340-1½ 546 (600-1½)	1360-2 566 (600-2)