

VOR/DME VIO	APP CRS	Rwy Idg	8501
115.95	175°	TDZE	788
Chan 106 (Y)		Apt Elev	794

VOR RWY 17

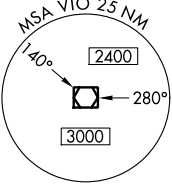
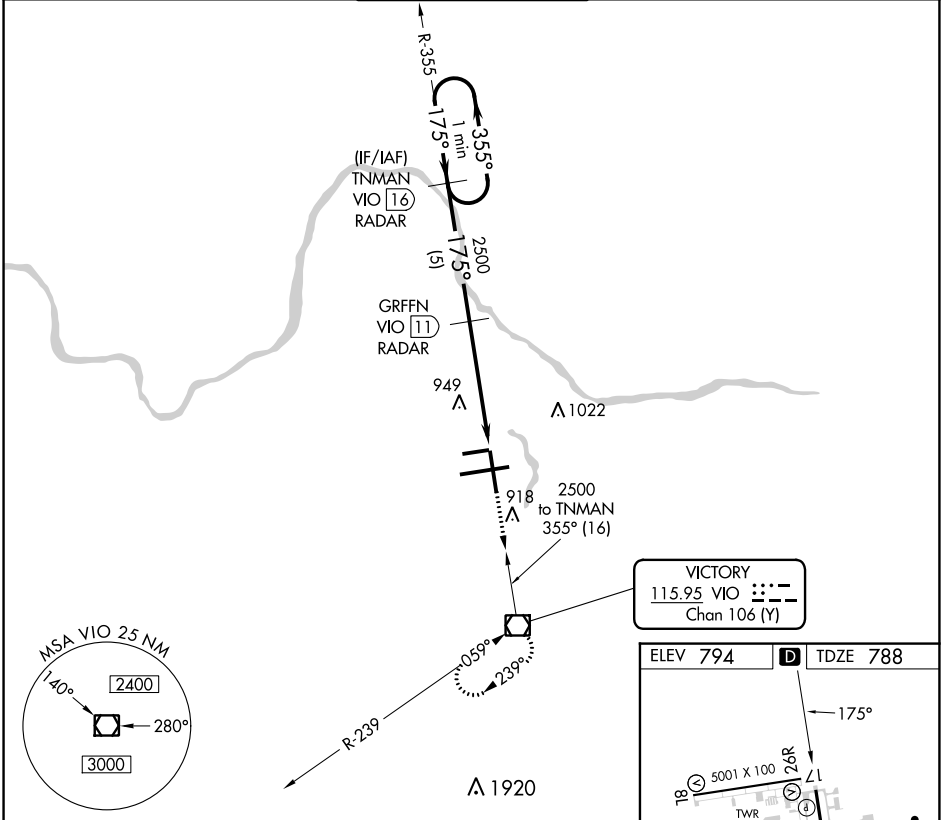
GERALD R FORD INTL (G.R.)

DME or RADAR required.

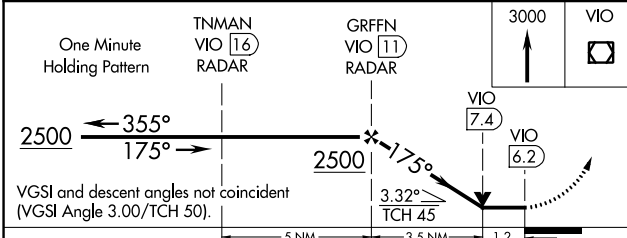
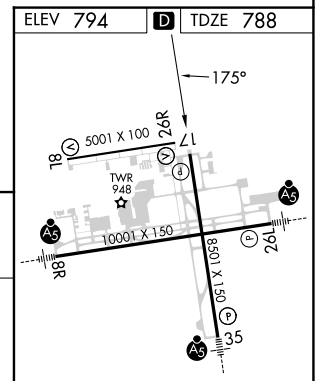
⚠ When local altimeter setting not received, use Holland altimeter setting and increase all MDA's 80 feet and increase S-17 Cat D visibility ¼ SM. Rwy 17 helicopter visibility reduction below ¼ SM NA.

MISSED APPROACH: Climb to 3000 direct VIO VOR/DME and hold.

ATIS 118.725	GREAT LAKES APP CON * 128.4 257.6	GRAND RAPIDS TOWER * 135.65 (CTAF) 0 339.8	GND CON 121.8	CLNC DEL 119.3	UNICOM 122.95
------------------------	---	--	-------------------------	--------------------------	-------------------------



VICTORY
115.95 VIO ---
Chan 106 (Y)



CATEGORY	A	B	C	D
S-17	1200-1	412 (500-1)	1200-1¼	412 (500-1¼)
Ⓢ CIRCLING	1280-1	486 (500-1)	1340-1½	1360-2
			546 (600-1½)	566 (600-2)

5 NM, 3.5 NM, 1.2 NM

FAF to MAP 4.7 NM					
Knots	60	90	120	150	180
Min:Sec	4:42	3:08	2:21	1:53	1:34

EC-1, 03 OCT 2024 to 31 OCT 2024

EC-1, 03 OCT 2024 to 31 OCT 2024