

LOC/DME I-SGS <b>108.35</b> Chan 20 (Y)	APP CRS <b>342°</b>	Rwy Idg TDZE Apt Elev	<b>4002</b> <b>820</b> <b>821</b>
---	------------------------	-----------------------------	---

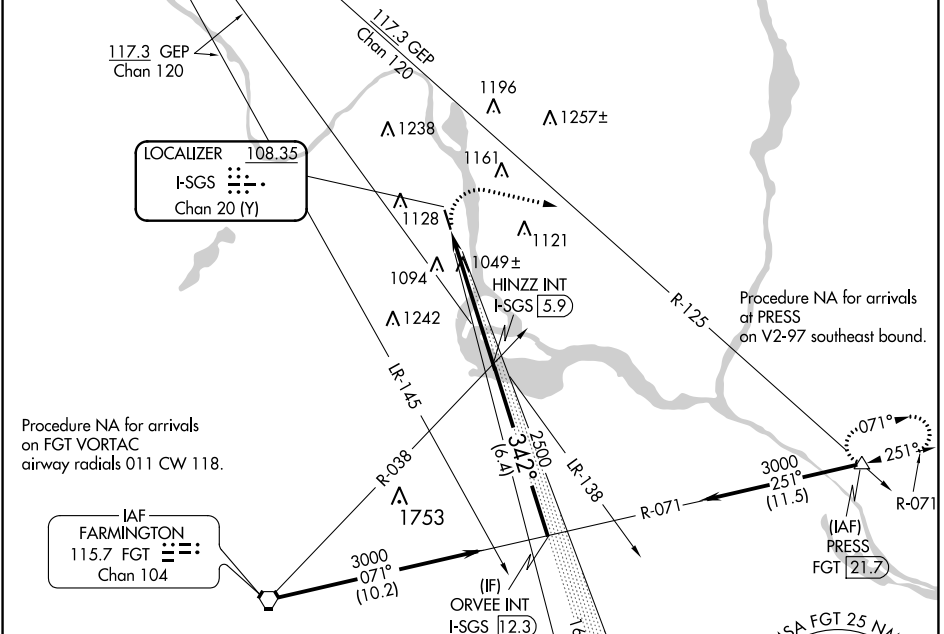
# LOC RWY 34

SOUTH ST PAUL MUNI/RICHARD E FLEMING FLD (SGS)

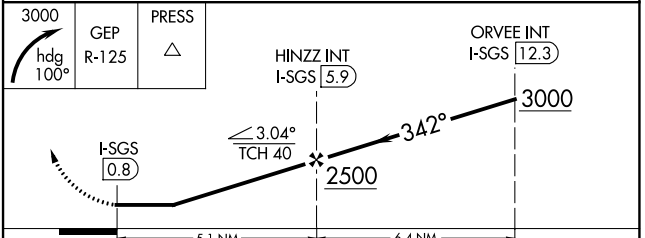
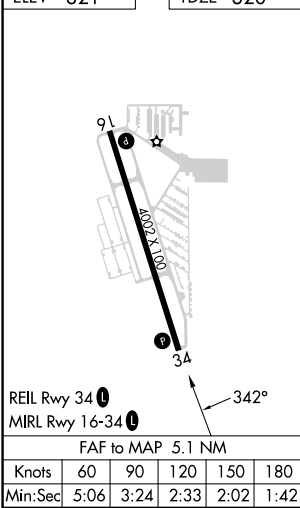
**NA** Helicopter visibility reduction below 3/4 SM NA. When local altimeter setting not received, use Minneapolis-St Paul Intl/Wold-Chamberlain altimeter setting and increase all MDA 40 feet. Increase Circling Cat C/D visibility 1/4 mile.

MISSED APPROACH: Climbing right turn to 3000 on heading 100° and on GEP VORTAC R-125 to PRESS INT/21.7 DME and hold.

AWOS-3 <b>119.425</b>	MINNEAPOLIS APP CON <b>121.2 335.65</b>	CLNC DEL <b>118.2</b>	UNICOM <b>122.7 (CTAF)</b>
--------------------------	--	--------------------------	-------------------------------



ELEV 821	TDZE 820
----------	----------



CATEGORY	A	B	C	D
S-34	1300-1	480 (500-1)	1300-1 <sup>3</sup> / <sub>8</sub>	480 (500-1 <sup>3</sup> / <sub>8</sub> )
<b>C</b> CIRCLING	1400-1	1540-1	1540-2	1620-2 <sup>1</sup> / <sub>2</sub>
	579 (600-1)	719 (800-1)	719 (800-2)	799 (800-2 <sup>1</sup> / <sub>2</sub> )

# LOC RWY 34

NC-1, 03 OCT 2024 to 31 OCT 2024

NC-1, 03 OCT 2024 to 31 OCT 2024