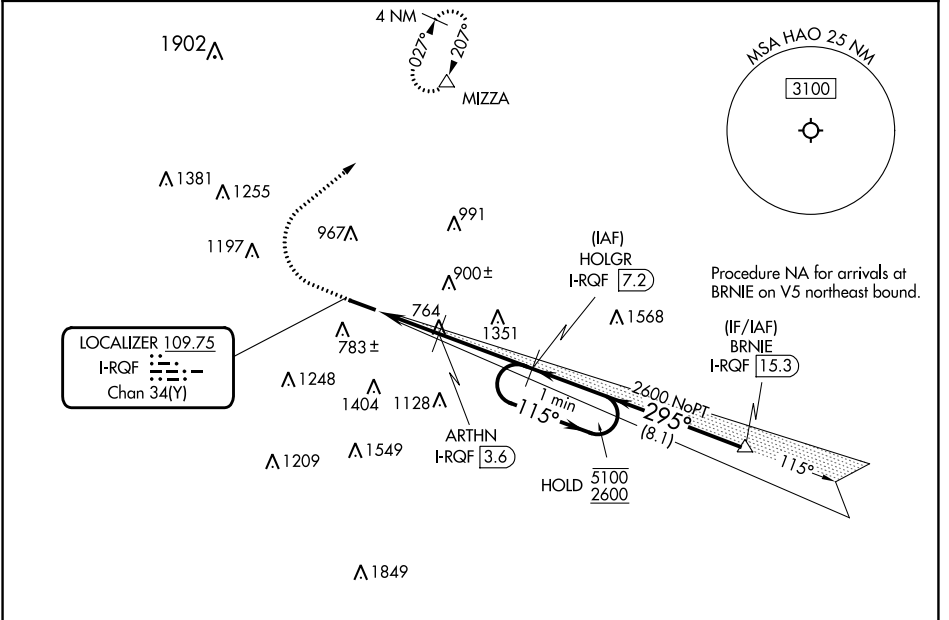


LOC/DME I-RQF <b>109.75</b>	APP CRS <b>295°</b>	Rwy Idg TDZE Apt Elev	<b>5500</b> <b>619</b> <b>632</b>
Chan <b>34 (Y)</b>			

# ILS or LOC RWY 29

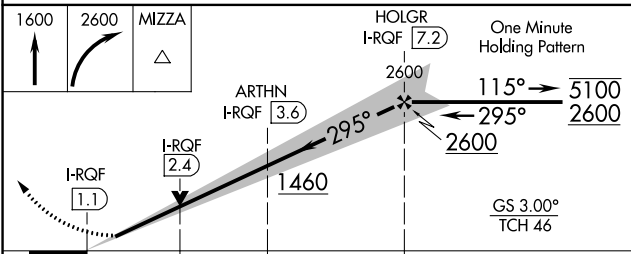
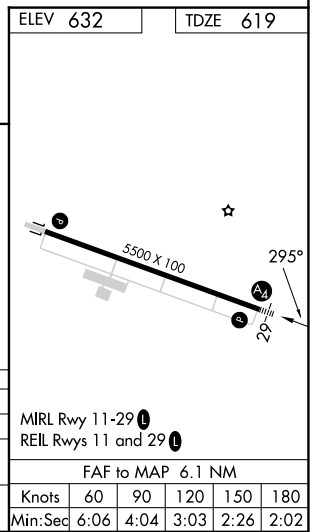
BUTLER COUNTY RGNL/HOGAN FLD (HAO)

RNP APCH - GPS DME required.		MALS	MISSED APPROACH: Climb to 1600 then climbing right turn to 2600 direct MIZZA and hold.
Inop table does not apply to S-ILS 29. 			
ASOS <b>121.425</b>	CINCINNATI APP CON <b>121.0 254.25</b>	CLNC DEL <b>126.25</b>	UNICOM <b>123.05 (CTAF) 0</b>



EC-2, 03 OCT 2024 to 31 OCT 2024

EC-2, 03 OCT 2024 to 31 OCT 2024



CATEGORY	A	B	C	D
S-ILS 29		819-3/4	200 (200-3/4)	
S-LOC 29	1080-3/4	461 (500-3/4)	1080-1/8	461 (500-1/8)
CIRCLING	1280-1	648 (700-1)	1300-1 3/4 668 (700-1 3/4)	1760-3 1128 (1200-3)

MIRL Rwy 11-29	
REIL Rwys 11 and 29	
FAF to MAP 6.1 NM	
Knots	60 90 120 150 180
Min:Sec	6:06 4:04 3:03 2:26 2:02