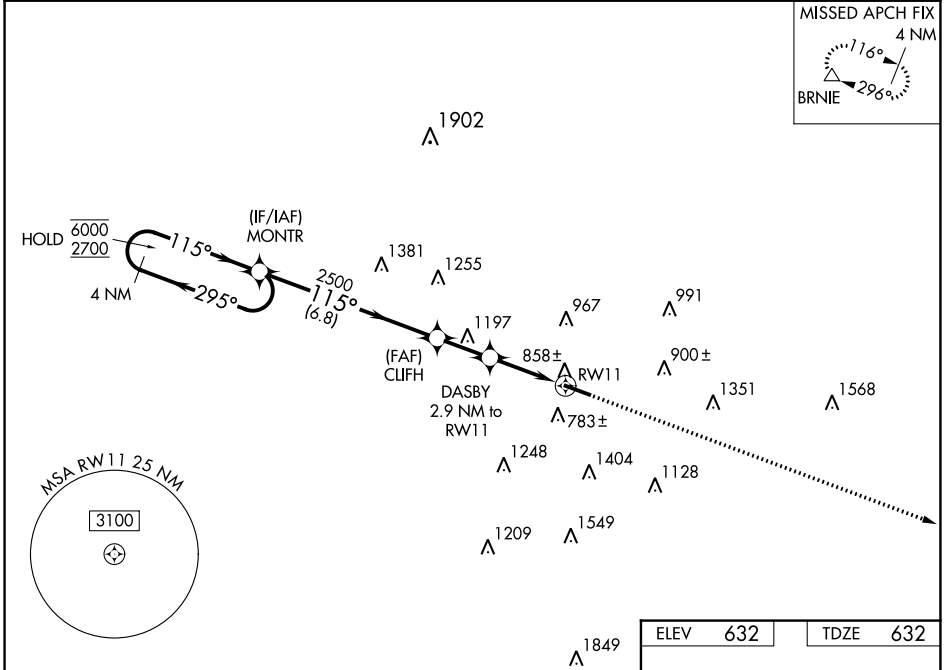


WAAS CH 56600 W11A	APP CRS 115°	Rwy Idg TDZE Apt Elev	5500 632 632
--	------------------------	-----------------------------	---

RNAV (GPS) RWY 11

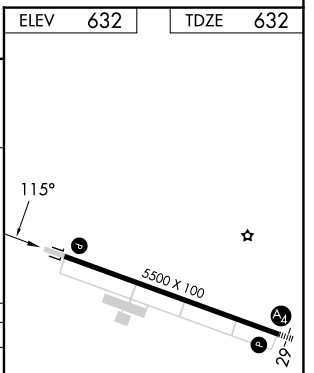
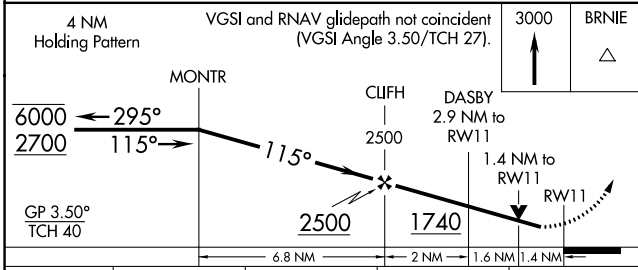
BUTLER COUNTY RGNL/HOGAN FLD (HAO)

RNP APCH - GPS.			MISSED APPROACH: Climb to 3000 direct BRNIE and hold.
ASOS 121.425	CINCINNATI APP CON 121.0 254.25	CLNC DEL 126.25	UNICOM 123.05 (CTAF)



EC-2, 03 OCT 2024 to 31 OCT 2024

EC-2, 03 OCT 2024 to 31 OCT 2024



CATEGORY	A	B	C	D
LPV DA		1020-1 $\frac{1}{8}$	388 (400-1 $\frac{1}{8}$)	
LNAV/VNAV DA		1108-1 $\frac{3}{8}$	476 (500-1 $\frac{3}{8}$)	
LNAV MDA	1160-1	528 (600-1)	1160-1 $\frac{1}{2}$	528 (600-1 $\frac{1}{2}$)
C CIRCLING	1280-1	648 (700-1)	1300-1 $\frac{3}{4}$ 668 (700-1 $\frac{3}{4}$)	1760-3 1128 (1200-3)

MIRL Rwy 11-29 **1**
REIL Rwy 11 and 29 **1**