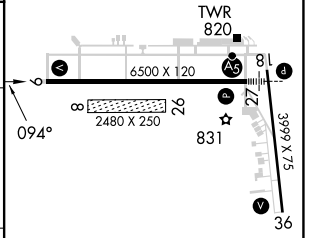
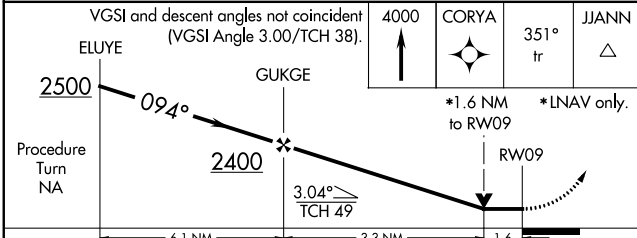
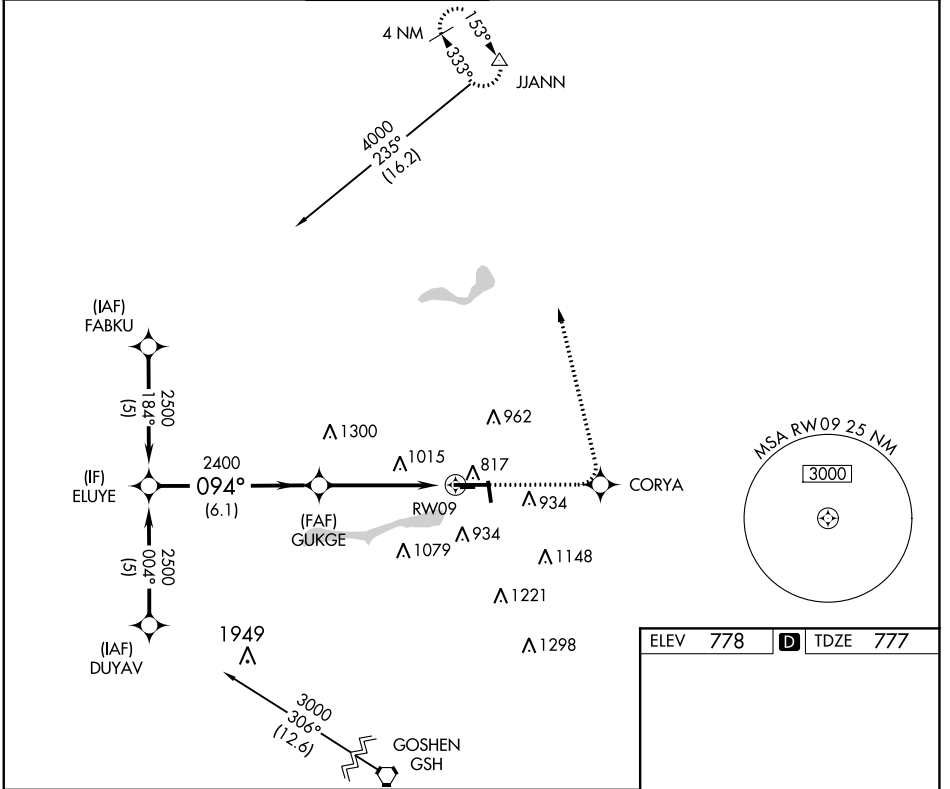


APP CRS	Rwy Idg	6500
094°	TDZE	777
	Apt Elev	778

RNAV (GPS) RWY 9

ELKHART MUNI (EKM)

RNP APCH.			MISSED APPROACH: Climb to 4000 direct CORYA and via 351° track to JJANN and hold.			
<p>▽ VDP NA when using South Bend altimeter setting. Circling Rwy 36 NA at night. Circling NA to Rwy 8 and 26. Rwy 9 helicopter visibility reduction below 3/4 SM NA. When local altimeter setting not received, use South Bend altimeter setting and increase all MDA 40 feet.</p> <p>▲</p>						
AWOS-3	SOUTH BEND APP CON *	ELKHART TOWER *	GND CON	CLNC DEL	CLNC DEL	UNICOM
124.475	118.55 257.8	119.5 (CTAF)	121.8	121.8	119.7 (When twr closed)	122.95



PROCEDURE TURN NA	6.1 NM	3.3 NM	1.6 NM	
CATEGORY	A	B	C	D
LNVA MDA	1340-1	563 (600-1)	1340-1½ 563 (600-1½)	1340-1¾ 563 (600-1¾)
C CIRCLING	1340-1	562 (600-1)	1380-1¾ 602 (700-1¾)	1580-2½ 802 (900-2½)

ELEV	778	TDZE	777
MIRL Rwy 18-36	⓪	HIRL Rwy 9-27	⓪
REIL Rwy 9, 18 and 36	⓪		

EC-2, 03 OCT 2024 to 31 OCT 2024

EC-2, 03 OCT 2024 to 31 OCT 2024