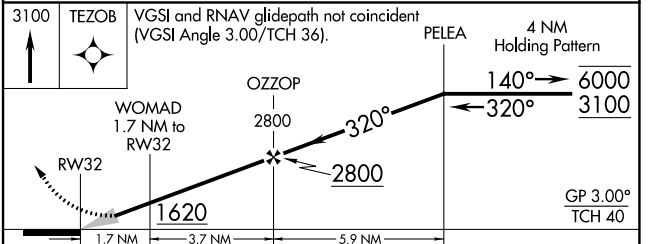
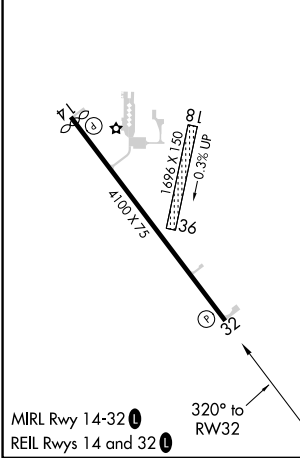
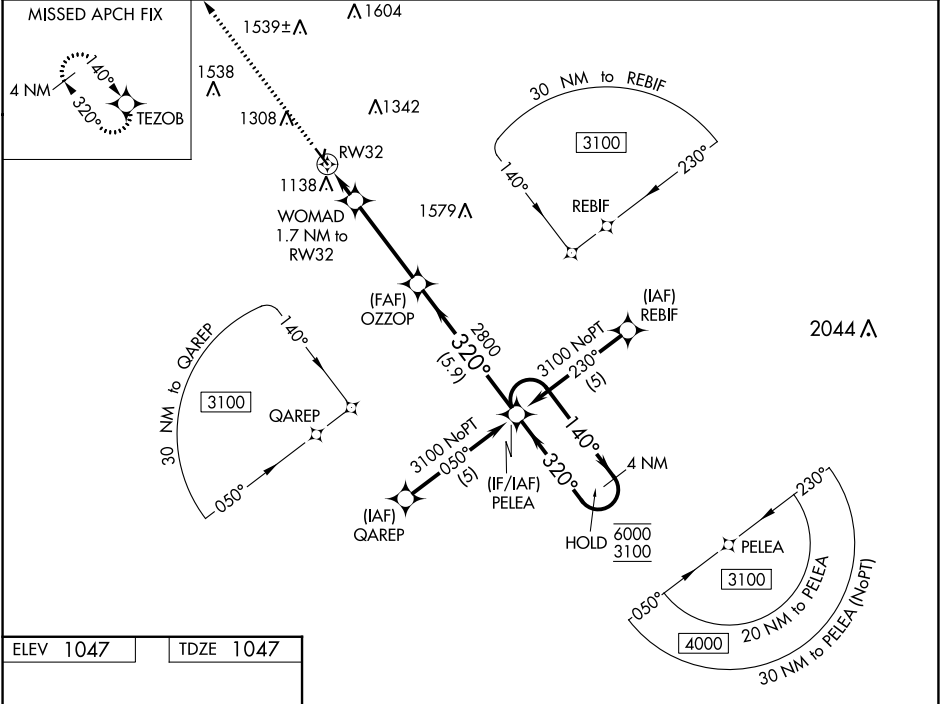


WAAS CH 40045 W32A	APP CRS 320°	Rwy ldg 4100 TDZE 1047 Apt Elev 1047
----------------------------------------	------------------------	-----------------------------------------------------------------

RNAV (GPS) RWY 32

JEFFERSON MUNI (E F W)

RNP APCH-GPS.		MISSED APPROACH: Climb to 3100 direct TEZOB and hold.
<p>⚠ Circling NA to Rwy 18 and 36. Baro-VNAV NA. Use Perry altimeter setting, when not received use Carrol altimeter setting and increase LPV DA to 1367. Increase LNAV/VNAV DA to 1367 and increase all MDA 40 feet.</p>		
PRO AWOS-3 118.0	MINNEAPOLIS CENTER 134.0 288.3	UNICOM 122.8 (CTAF) 0



CATEGORY	A	B	C	D
LPV DA	1334-1	287 (300-1)		NA
LNAV/VNAV DA	1334-1	287 (300-1)		NA
LNAV MDA	1440-1	393 (400-1)		NA
CIRCLING	1600-1 553 (600-1)	1660-1 613 (700-1)		NA

NC-3, 03 OCT 2024 to 31 OCT 2024

NC-3, 03 OCT 2024 to 31 OCT 2024