

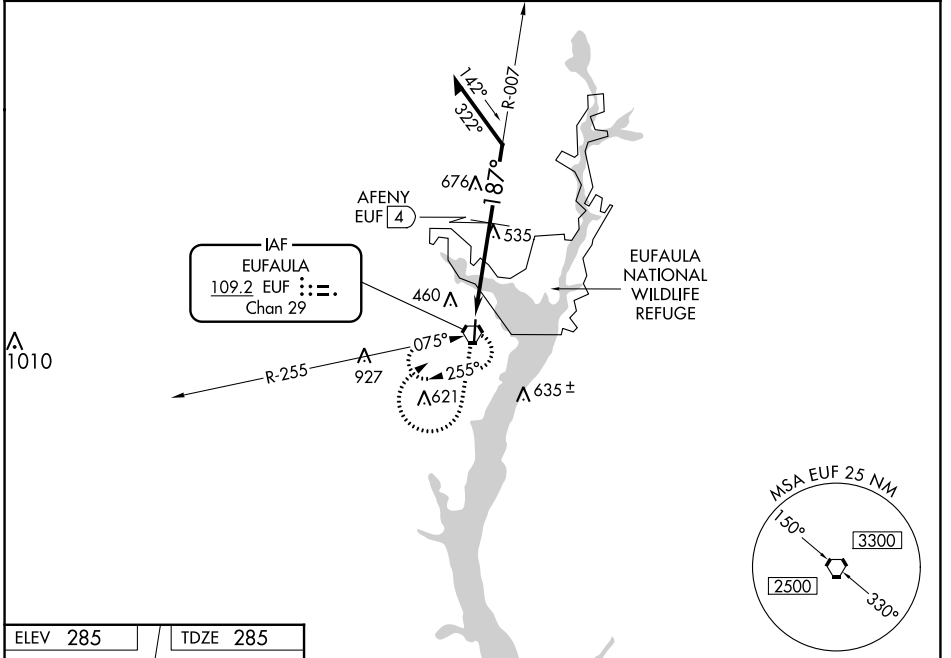
VORTAC EUF <b>109.2</b> Chan 29	APP CRS <b>187°</b>	Rwy Idg TDZE Apt Elev	<b>5000</b> <b>285</b> <b>285</b>
---------------------------------------	------------------------	-----------------------------	---

**VOR RWY 18**  
WEEDON FLD (EUF)

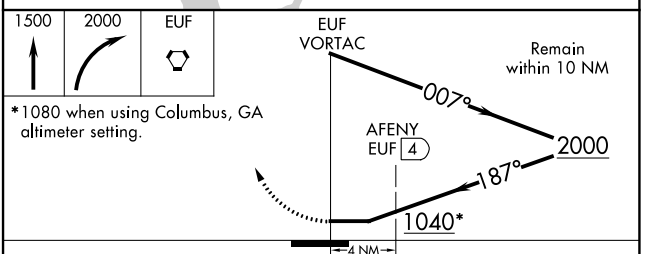
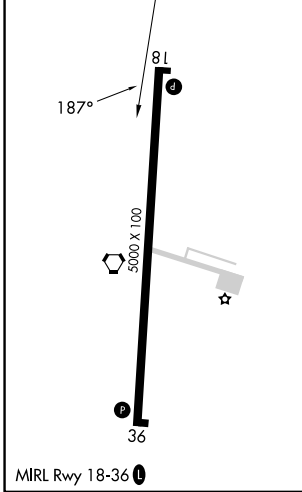
**NA** When local altimeter setting not received, use Columbus, GA altimeter setting and increase all MDAs 40 feet and S-18 visibility Cats C and D ½ SM and Circling Cats C and D ¼ SM. Increase AFENY fix minimums S-18 visibility Cats C and D ½ SM and Circling visibility Cats C and D ¼ SM.

MISSED APPROACH: Climb to 1500 then climbing right turn to 2000 direct EUF VORTAC and hold.

ASOS <b>128.325</b>	ATLANTA APP CON * <b>125.5 323.1</b>	CLNC DEL <b>134.25 339.8</b>	UNICOM <b>122.8 (CTAF)</b>
------------------------	---	---------------------------------	-------------------------------



ELEV 285	TDZE 285
----------	----------



CATEGORY	A	B	C	D
S-18	1040-1 755 (800-1)	1040-1¼ 755 (800-1¼)	1040-2	755 (800-2)
CIRCLING	1040-1 755 (800-1)	1040-1¼ 755 (800-1¼)	1060-2¼ 775 (800-2¼)	1060-2½ 775 (800-2½)
AFENY FIX MINIMUMS (DME REQUIRED)				
S-18	900-1	615 (700-1)	900-1¾	615 (700-1¾)
CIRCLING	920-1	635 (700-1)	1060-2¼ 775 (800-2¼)	1060-2½ 775 (800-2½)

SE-4, 03 OCT 2024 to 31 OCT 2024

SE-4, 03 OCT 2024 to 31 OCT 2024